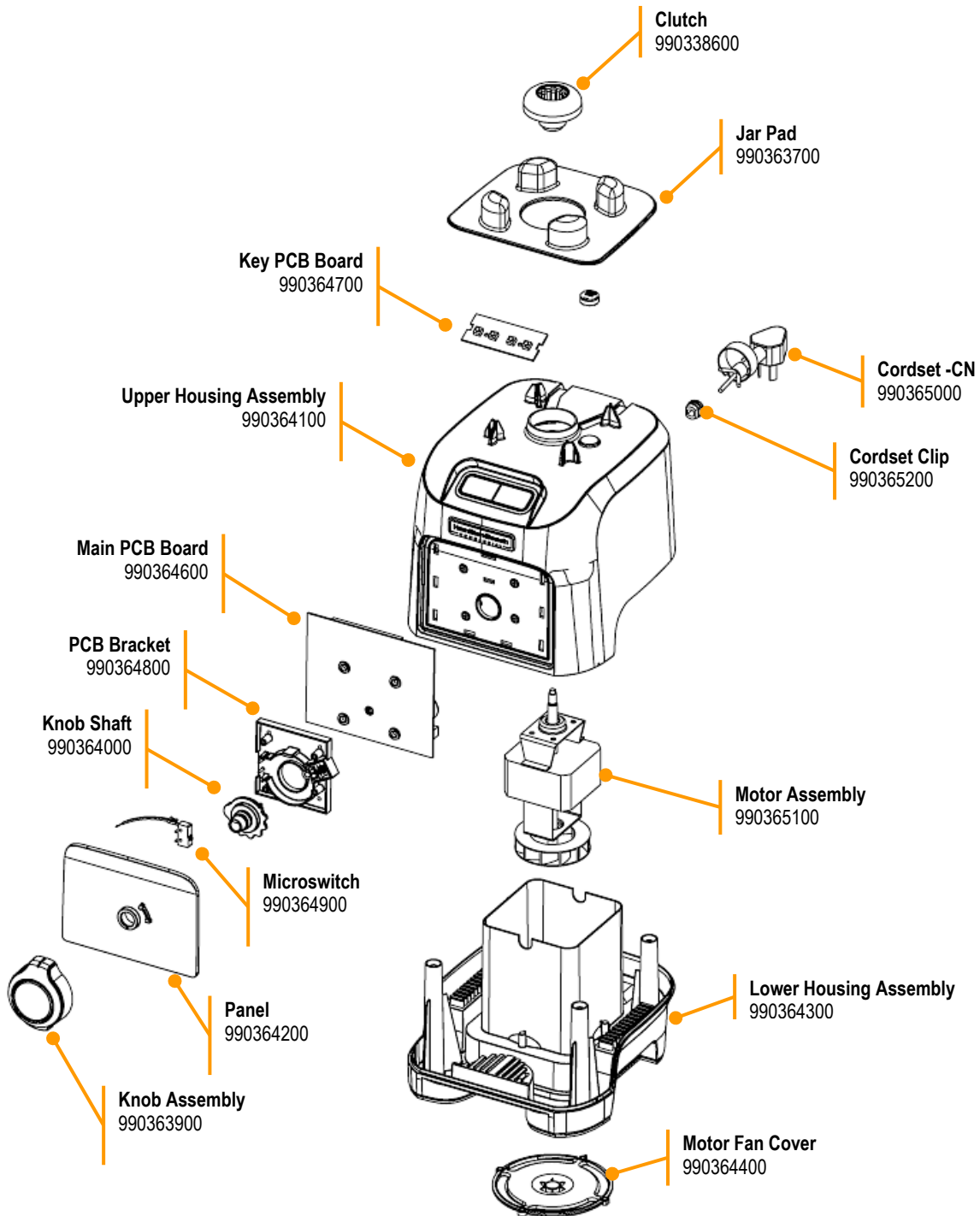


Parts & Accessories Diagram

PROPRIETARY RIGHTS NOTICE This document and all information contained within it is the property of Hamilton Beach Brands, Inc. (HBB). It is confidential and proprietary and has been provided to you for a limited purpose. It must be returned or destroyed upon request. Disclosure, reproduction or use of this document and any information contained within it, in full or in part, for any purpose is forbidden without the prior written consent of HBB. No photographs may be taken of any article fabricated or assembled from this document without the prior written consent of HBB.

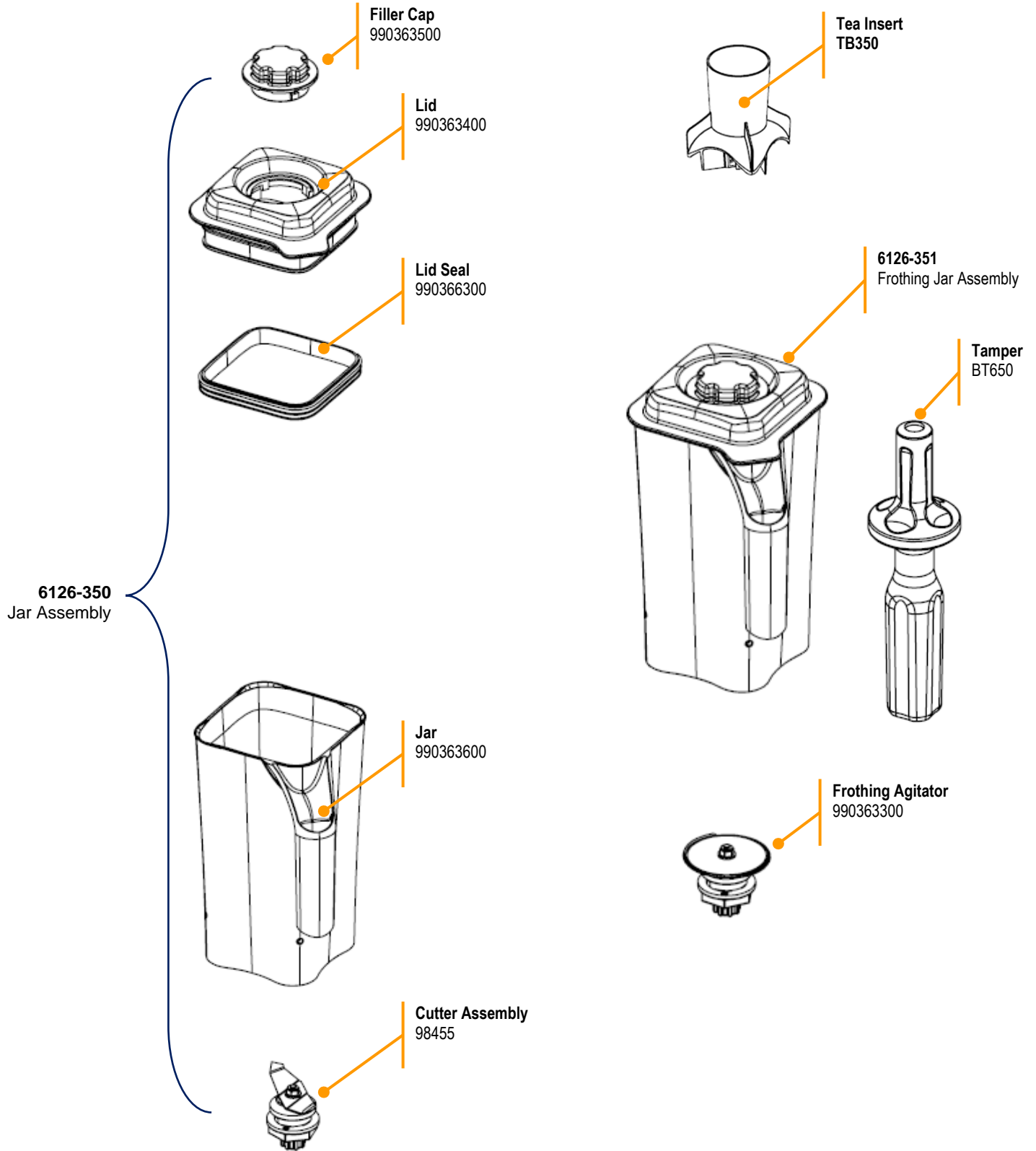
Replacement Parts



Hamilton Beach 4421 Waterfront Drive Glen Allen, VA 23060	Revision	Removed Tea Insert from Jar Assembly 6126-350, changed part number from 990363800 to TB350				Rev. Date:	
	Description:					04/20/2021	
	Request #:	DOC11756	Page:	1 of 2	Document #:	540102100	Rev: B

Parts & Accessories Diagram

PROPRIETARY RIGHTS NOTICE This document and all information contained within it is the property of Hamilton Beach Brands, Inc. (HBB). It is confidential and proprietary and has been provided to you for a limited purpose. It must be returned or destroyed upon request. Disclosure, reproduction or use of this document and any information contained within it, in full or in part, for any purpose is forbidden without the prior written consent of HBB. No photographs may be taken of any article fabricated or assembled from this document without the prior written consent of HBB.



Hamilton Beach 4421 Waterfront Drive Glen Allen, VA 23060	Revision	Removed Tea Insert from Jar Assembly 6126-350, changed part number from				Rev. Date:
	Description:	990363800 to TB350				04/20/2021
Request #:	DOC11756	Page:	2 of 2	Document #:	540102100	Rev: B