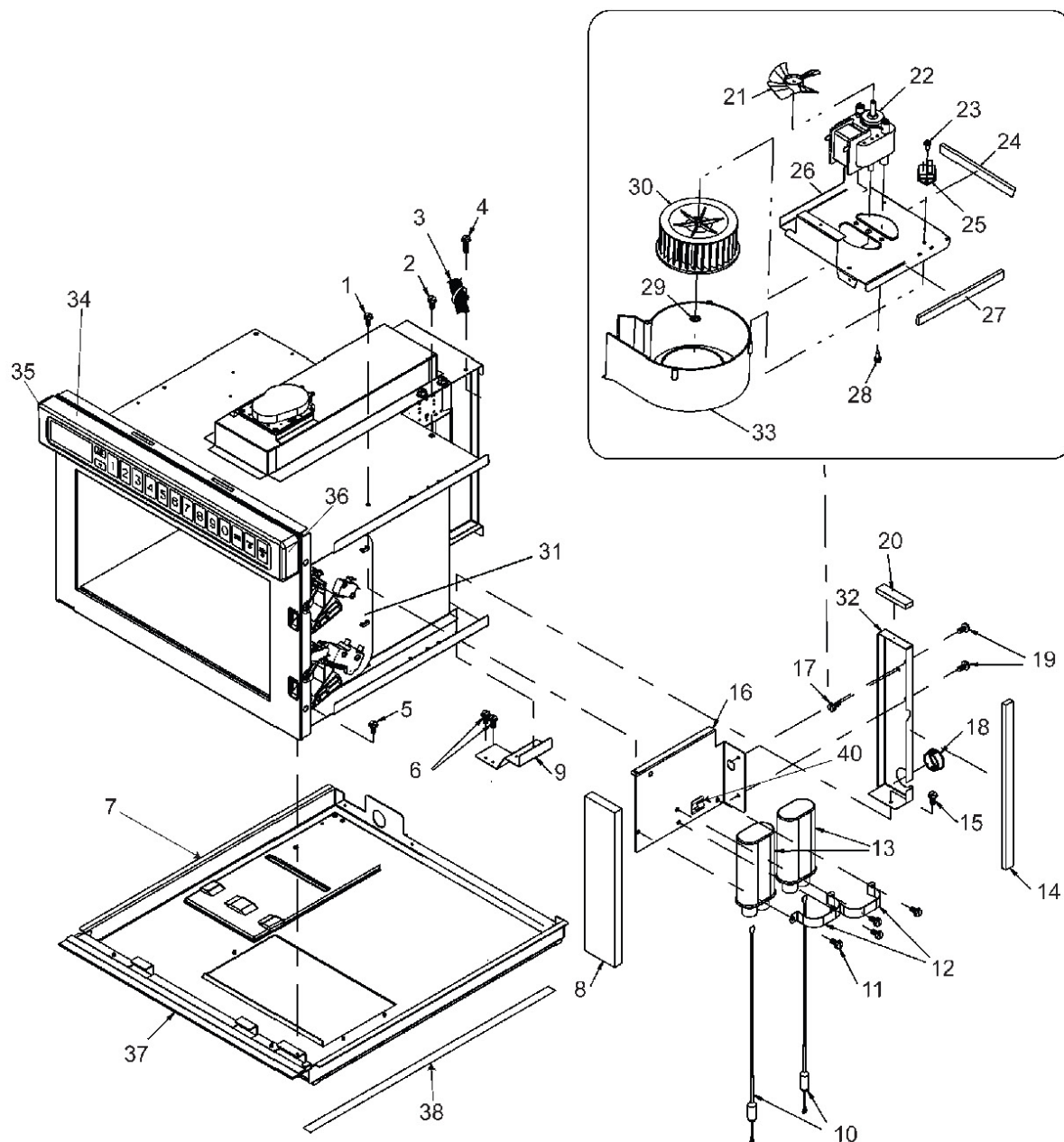


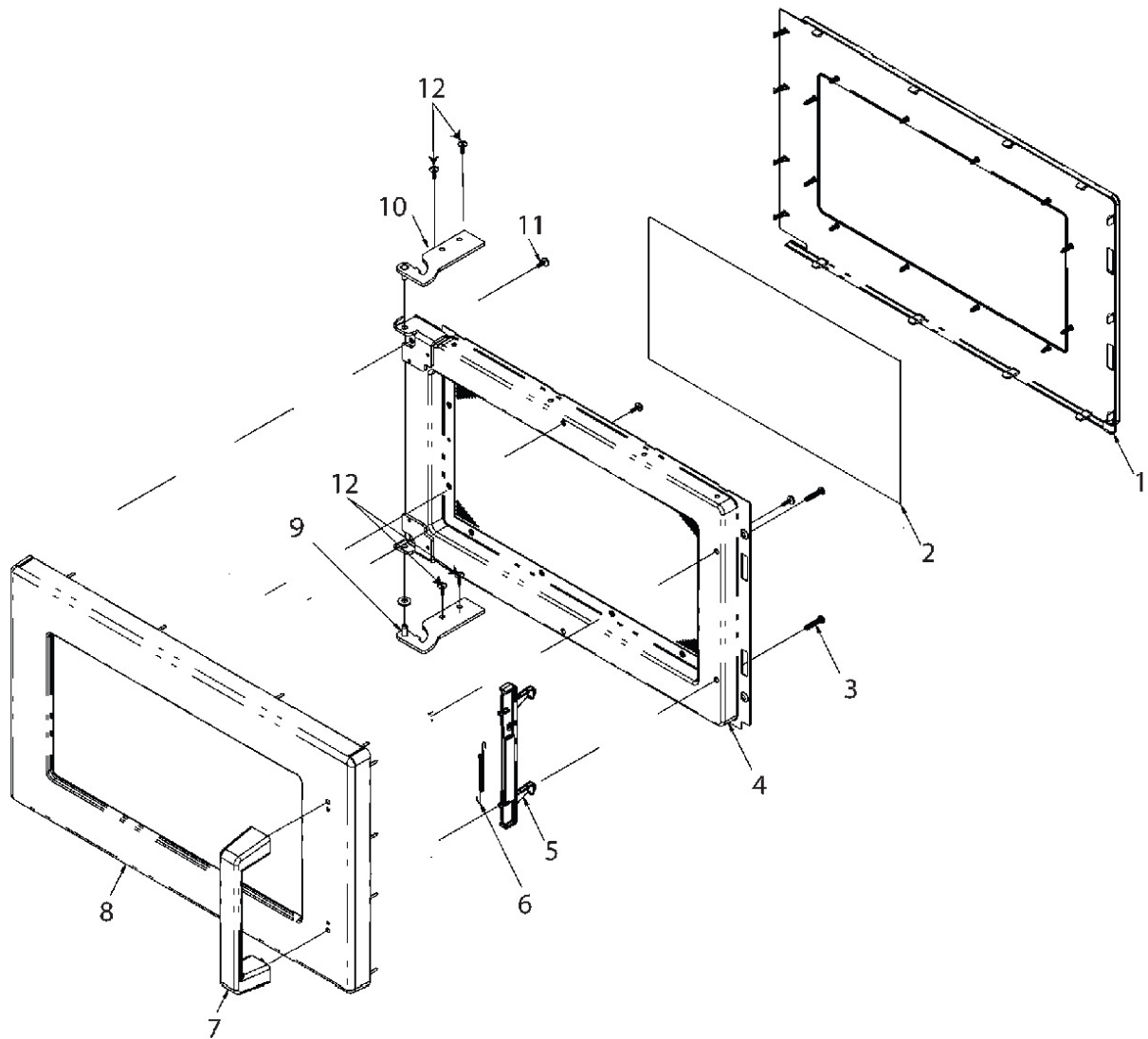
## BLOWER, CAPACITOR, DIODE, INTERLOCK



**BLOWER, CAPACITOR, DIODE, INTERLOCK**

Ref #	Part #	Part Name	Qty	Type
1	12990524	SCREW-SM/HEX RoHS	1	F
2	12990522	SCREW-SM/HEX RoHS	1	
3	20043801	HARNESS, OVEN	1	F
4	12990523	SCREW-SM/HEX RoHS	1	F
5	12990524	SCREW-SM/HEX RoHS	4	F
6	12990522	SCREW-SM/HEX RoHS	2	
7	59002074	BASEPAN & GASKET ASSY	1	
8	12525702	BARRIER-AIR	1	
9	12529501	BRKT-DIODE	1	F
10	20076101	DIODE ASSY	2	F
11	12990524	SCREW-SM/HEX RoHS	4	F
12	21010502	BRKT-CAPACITOR	2	0
13	59001167	CAPACITOR- .90	2	F
14	59004077	GASKET, PER FT	1	None
15	12990522	SCREW-SM/HEX RoHS	1	
16	21010501	CAPACITOR BRKT- FLAT	1	
17	12990522	SCREW-SM/HEX RoHS	1	
18	A3293506	BUSHING - SNAP	1	None
19	12990524	SCREW-SM/HEX RoHS	2	F
20	59004077	GASKET, PER FT	1	None
21	B5706704	BLADE, FAN	1	F
22	59004019	MOTOR, BLOWER	1	F
23	12990522	SCREW-SM/HEX RoHS	1	
24	59002162	GASKET, PER FT	1	F
25	R0157373	KIT, TRIAC	1	F
26	20043001Q	BLOWER BRKT WELD	1	
27	59002162	GASKET, PER FT	2	F
28	12990522	SCREW-SM/HEX RoHS	1	
29	20020502	RETAINER	1	
30	12138201	WHEEL, BLOWER	1	F
31	59114167	INTERLOCK SWITCH ASSY	1	F
32	12525702	BARRIER-AIR	1	
33	12138302	SCROLL, BLOWER	1	
34	59104138	TOUCH PANEL ASSY	1	F
35	12131002	ENDCAP-ESC LEFT	1	
36	12131001	ENDCAP-ESC RIGHT	1	None
37	20071101	SUPPORT-CAVITY	1	0
38	R0000413	GASKET, BASEPAN - 90 in (228 cm)	1	F
39	20039704	HARNESS-HV	1	F
40	M0104106	CLIP-CORD	1	F

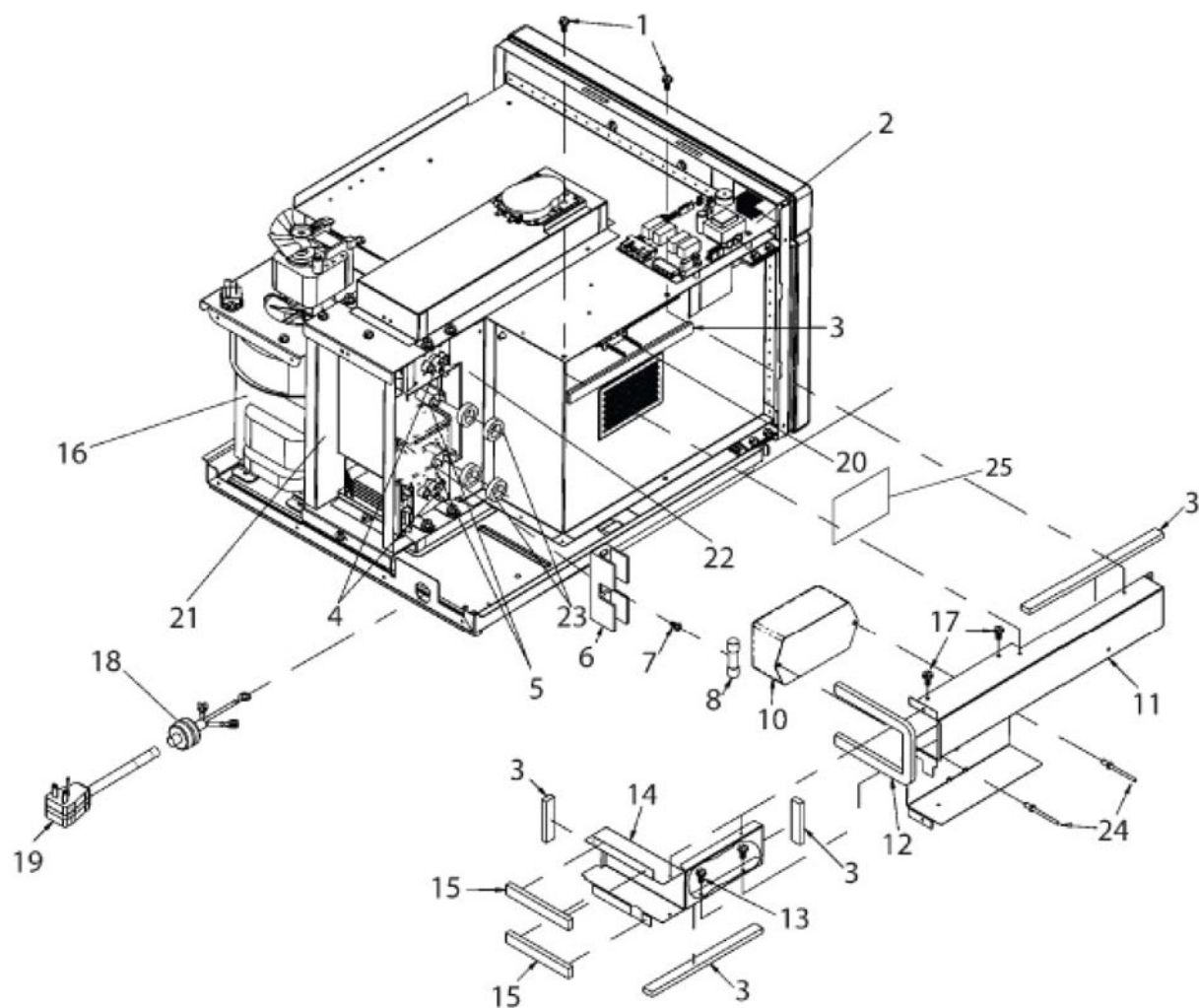
# DOOR



**DOOR**

Ref #	Part #	Part Name	Qty	Type
1	59114168	INNER DOOR	1	F
2	20044801	WINDOW-INNER DOOR	1	
3	13041506	SCREW	2	
4	59114170	WELD, INNER DOOR & WINDOW	1	F
5	59114175	LATCH, DOOR	1	F
6	20045102	SPRING-DOOR LATCH	1	F
7	12133901	HANDLE-DOOR	1	F
8	59114174	OUTER DOOR ASSY- MM	1	F
9	14119059	KIT, HINGE- BOTTOM	1	F
10	14119058	KIT, HINGE- TOP	1	F
11	12990606	SCREW-SM/PAN RoHS	4	F
12	13048902	SCREW-TF/HEX	4	None

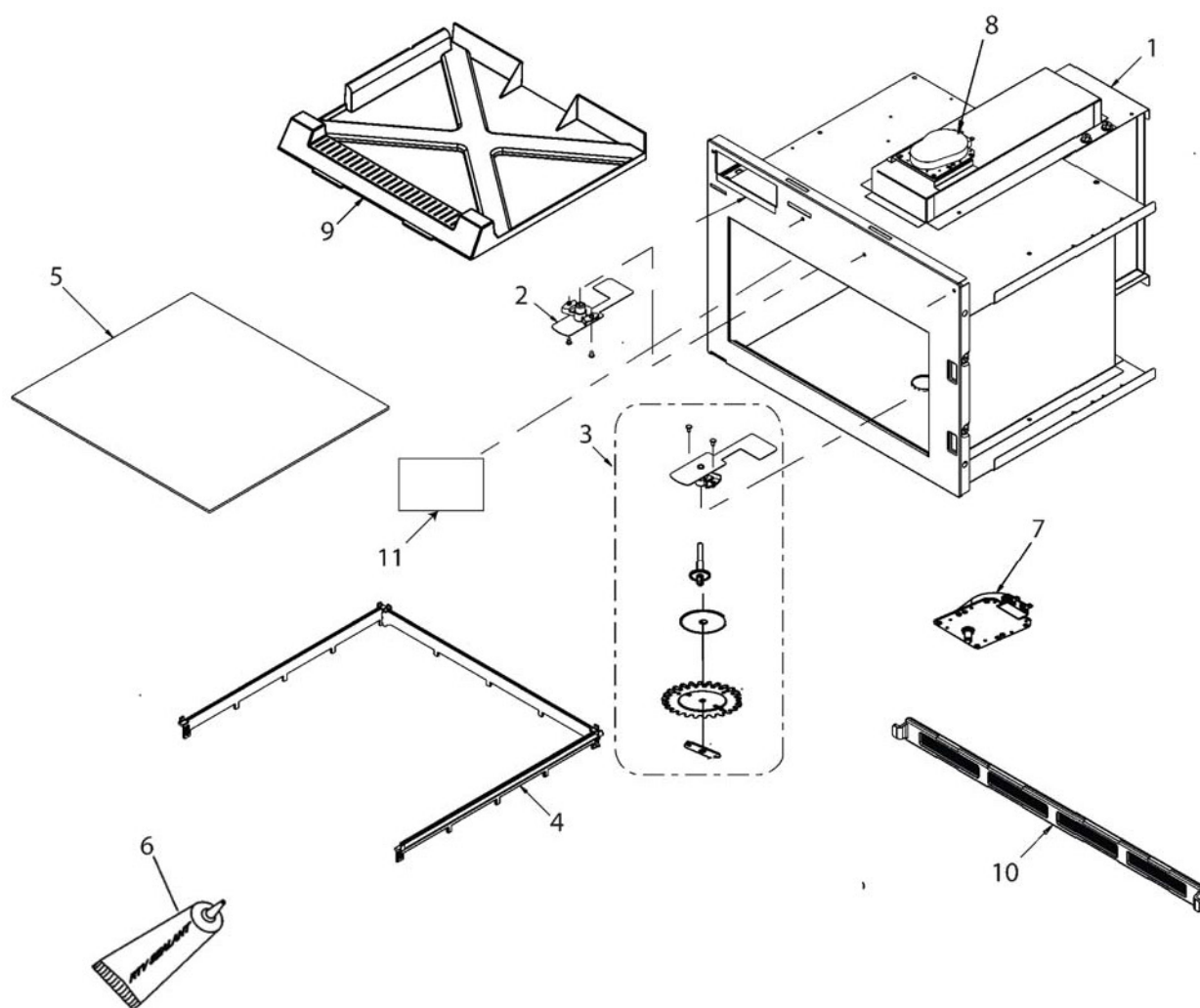
## LV / HV CONTROL, MAGNETRONS, DUCTS, FUSE



**LV / HV CONTROL, MAGNETRONS, DUCTS, FUSE**

Ref #	Part #	Part Name	Qty	Type
1	12990524	SCREW-SM/HEX RoHS	2	F
2	59004111	BOARD, HV/LV	1	F
3	M0275058	TAPE-FOAM (ROLL)	5	F
4	B5684129	THERMAL CUTOUT	2	F
5	59004013	MAGNETRON	2	F
6	10091101	BLOCK-FUSE	1	F
7	12990522	SCREW-SM/HEX RoHS	1	
8	M0805203	FUSE-20A	1	F
9	B5677203	BLOCK-TERMINAL	1	F
10	59001893	FILTER, LINE	1	F
11	12135604	CAVITY EXH DUCT-E CT	1	0
12	59004077	GASKET, PER FT	1	None
13	12990522	SCREW-SM/HEX RoHS	2	
14	12135704	DUCT, CAVITY EXHAUST	1	0
15	59002162	GASKET, PER FT	2	F
16	59114146	TRANSFORMER, HV	1	F
17	12992305	SCREW-TF/HEX RoHS1	1	F
19	13033802	POWER CORD	1	F
20	B5795319	THERMAL CUTOUT, CAVITY	1	F
21	12107407	DUCT, MAG OUTLET	1	0
22	12107304	DUCT, MAG INLET	1	0
23	44780P01	TOROID	4	F
24	A4539638	RIVET-POP RoHS	2	F
25	B8367705	WINDOW-OVEN LIGHT	1	None

## TRAY, CAVITY, ANTENNAS



**TRAY, CAVITY, ANTENNAS**

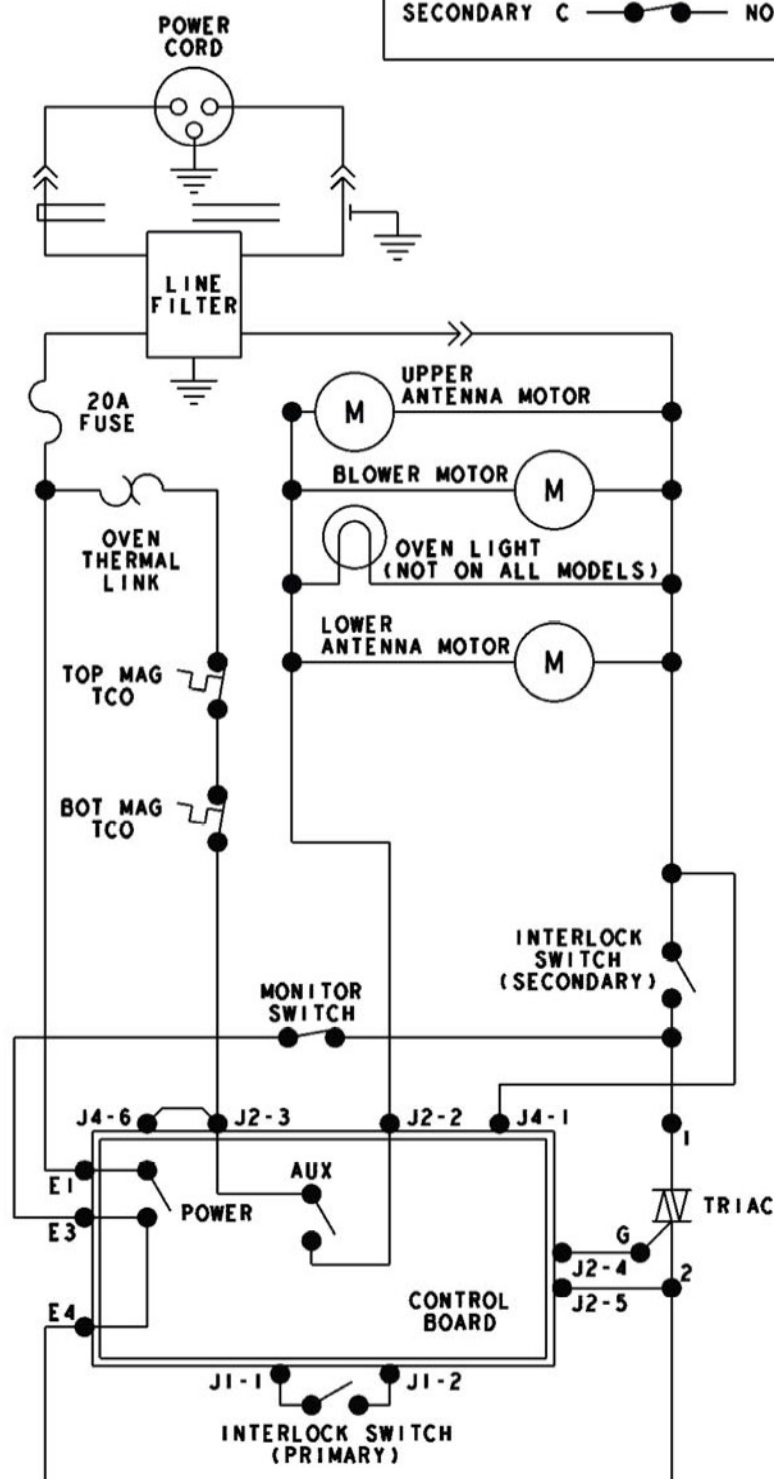
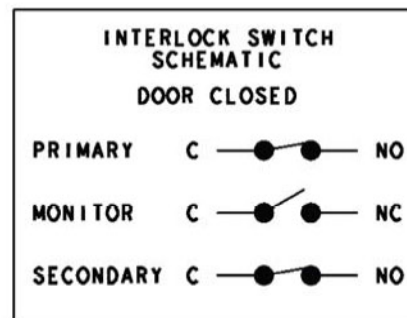
Ref #	Part #	Part Name	Qty	Type
1	14129066	KIT, CAVITY- 18 & 21	1	F
2	59124178	ANTENNA & RIVETS	1	F
3	14129065	KIT, ANTENNA- BOTTOM	1	F
4	14109044	KIT, TRAY SUPPORTS & SEALER	1	
5	14109040	KIT, CERAMIC TRAY & SEALER	1	F
6	59002167	SEALER	1	F
7	R9900668	KIT, ANTENNA MOTOR- BOTTOM	1	F
8	59124180	MOTOR, ANTENNA- TOP	1	F
9	59124202	ANTENNA SHIELD	1	F
10	59001659	FILTER, AIR	1	
11	R9900114	KIT, WINDOW	1	

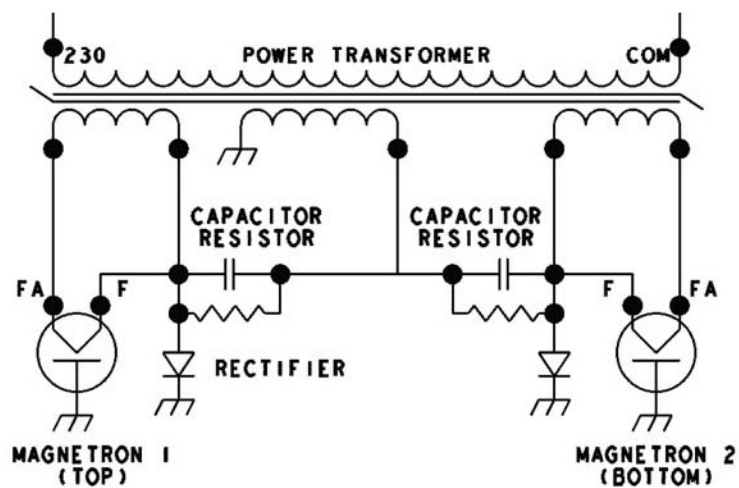


# WIRING DIAGRAM

230V 50HZ  
3-WIRE

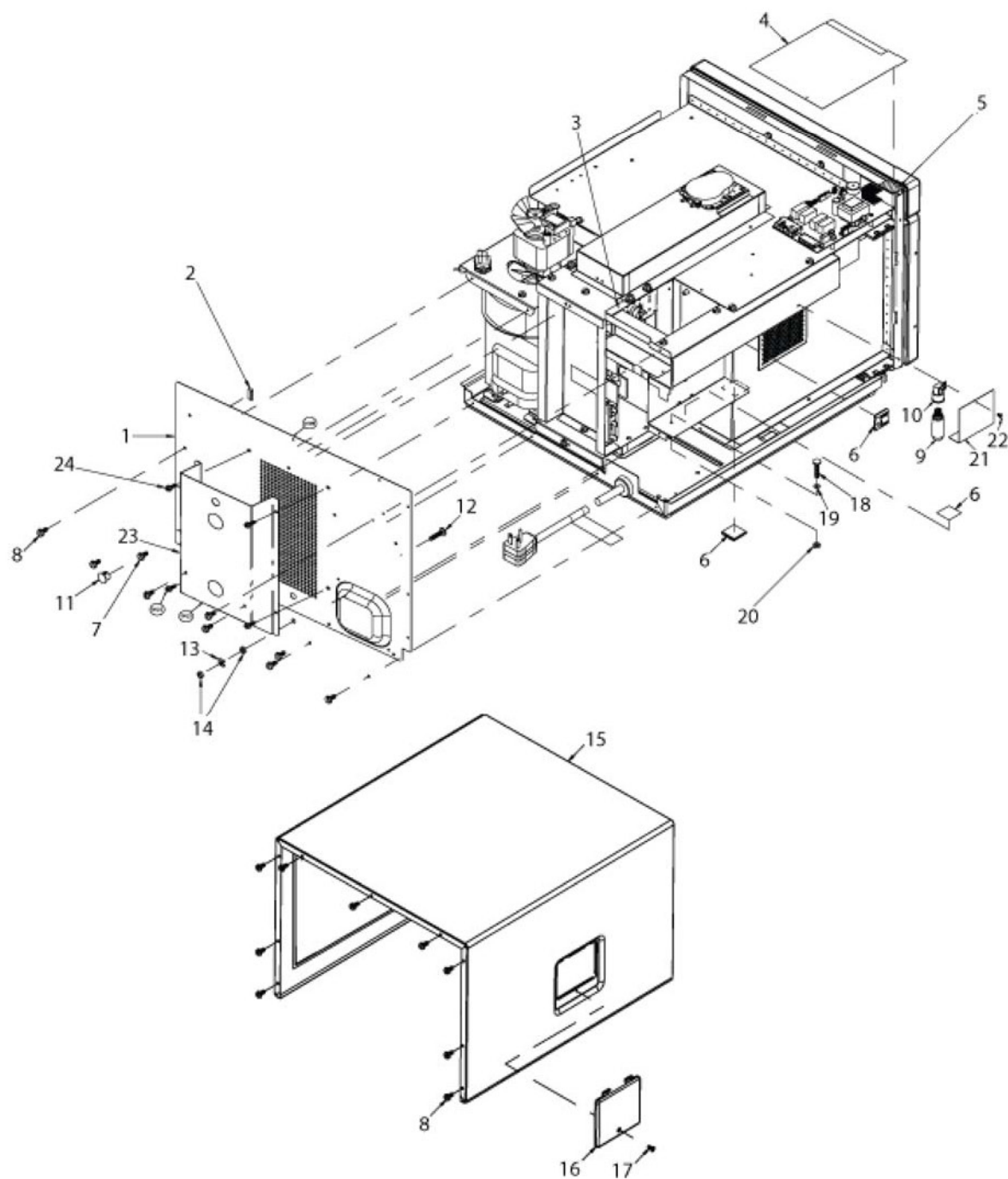
SCHEMATIC  
CONDITION:  
DOOR OPEN





**WIRING DIAGRAM**

Ref #	Part #	Part Name	Qty	Type
<i>There are currently no parts to display. Please check back soon!</i>				



**WRAPPER / REAR COVER / LAMP**

Ref #	Part #	Part Name	Qty	Type
1	20138502	ACCESS PANEL WELD-E CT	1	None
2	59002162	GASKET, PER FT	1	F
3	59002162	GASKET, PER FT	4	F
4	12160602	SHIELD-SPILL	1	
5	M0275163	TAPE-TRANSFER (ROLL)	1	
6	M0104106	CLIP-CORD	2	F
7	12990525	SCREW-SM/HEX RoHS	1	F
8	12990525	SCREW-SM/HEX RoHS	17	F
9	59002071	LAMP	1	0
10	12163802	RECEPTACLE- EXPORT	1	F
11	13098801	PLUG, HOLE	1	
12	M0293512	STUD -M6	1	
13	12152201	WASHER-U TYPE	1	F
14	13045504	NUT - M6 KEPS	2	
15	12408502Q	WRAPPER	1	
16	10785608	COVER-LIGHT	1	
17	13095201	SCREW	1	None
18	M0293511	STUD 6	1	
19	M0272513	WASHER	1	
20	13045501	NUT -#6 KEPS	4	F
21	12544201	BARRIER-LAMP	1	0
22	12992307	SCREW-TF/HEX RoHS	1	F
23	21028403	AIR DUCT-E CT	1	None
24	12990524	SCREW-SM/HEX RoHS	4	F