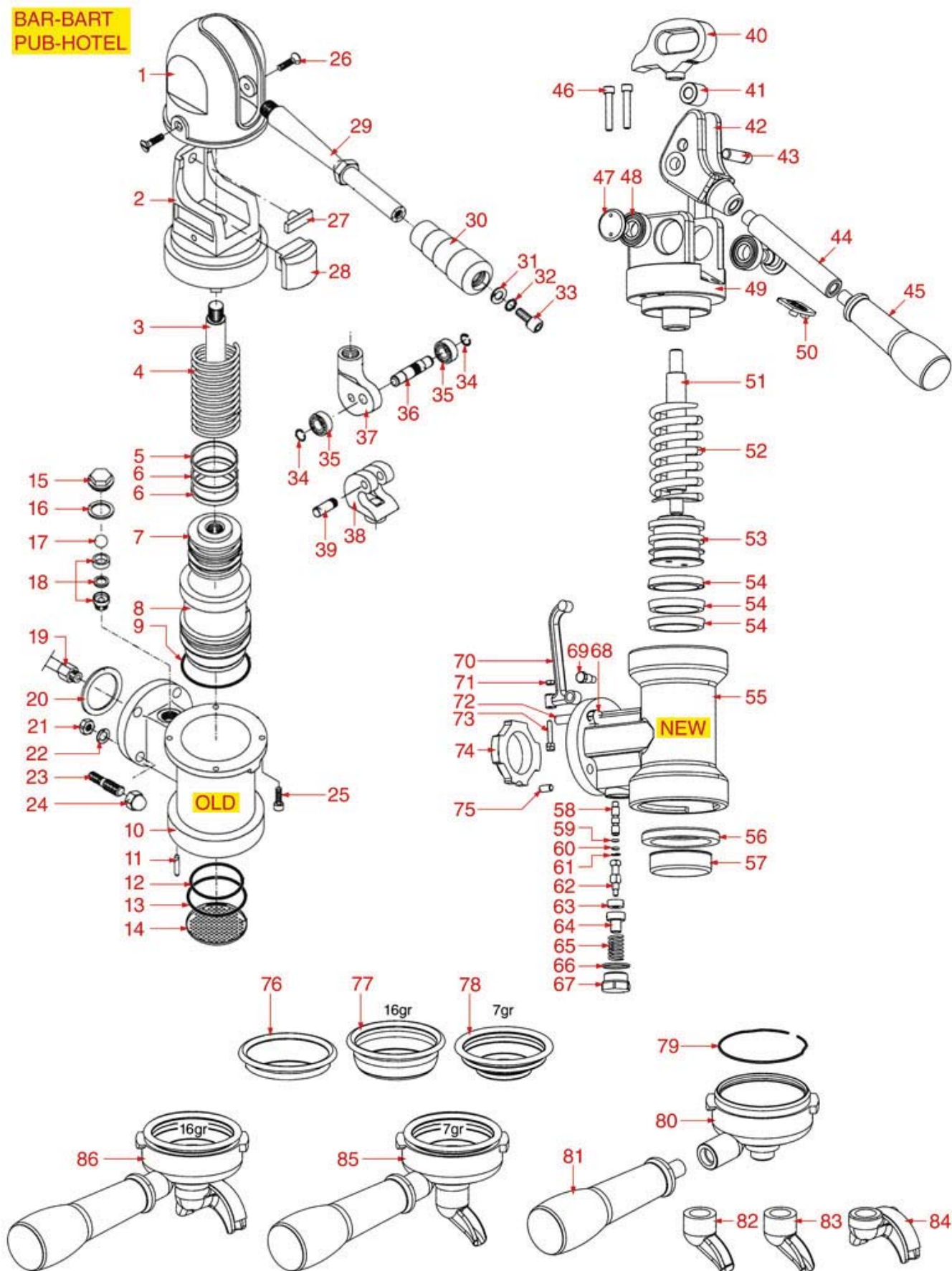


**LEVER BREW GROUP BAR-BART-PUB-HO**



PA1101

**Positions without LF code no.: upon request**



# PAVONI



| Position | LF code no. | Description                              |
|----------|-------------|--|
| 1        | 1192200     | CAP FOR COFFEE GROUP                     |
| 4        | 1250501     | LEVER GROUP SPRING                       |
| 5        | 1186197     | LIP SEAL ø 52x40x7 mm                    |
| 6        | 1186197     | LIP SEAL ø 52x40x7 mm                    |
| 8        | 1184015     | GUIDE PISTON BUSHING                     |
| 9        | 1186199     | O-RING 0162 EPDM                         |
| 12       | 1186198     | O-RING 0161 EPDM                         |
| 14       | 1081003     | SHOWER SCREEN ø 57.5 mm                  |
| 15       | 1439200     | CAP ø 18 mm FOR BREW GROUP               |
| 16       | 1186200     | ROUND COPPER GASKET ø 24x18x3 mm         |
| 17       | 1323200     | STAINLESS STEEL BALL ø 12 mm             |
| 18       | 1523404     | NON-RETURN VALVE                         |
| 19       | 1449200     | DELIVERY GROUP INJECTOR PIPE             |
| 21       | 3060069     | S/STEEL HEXAGONAL MEDIUM NUT M8 UNI 5588 |
| 22       | 1186058     | S/STEEL COGGED WASHER M8 UNI 8842        |
| 27       | 1186205     | RUBBER SHOCK ABSORBER                    |
| 28       | 1186046     | RUBBER SHOCK ABSORBER                    |
| 30       | 1241200     | LEVER GROUP HANDLE                       |
| 31       | 1186043     | ZINC-PLATED FLAT WASHER 16x8,5x1,6       |
| 32       | 1186058     | S/STEEL COGGED WASHER M8 UNI 8842        |
| 33       | 1528026     | SCREW M8x1 mm UNI 5931                   |
| 34       | 1348023     | STAINLESS STEEL CIRCLIP RA-9 UNI 7437    |
| 35       | 1063200     | BEARING 6300 2RS                         |
| 36       | 1324200     | PIN FOR BEARING                          |
| 37       | 1192202     | CHROMIUM-PLATED FORK FOR LEVER GROUP     |
| 39       | 1324201     | PIN FOR FORK                             |
| 45       | 1241700     | FILTER HOLDER HANDLE M12                 |
| 54       | 5035722     | LIP GASKET ø 53x42x7.5 mm                |
| 56       | 1186632     | FILTER HOLDER GASKET ø 73x57x8 mm        |
| 58       | 5038097     | TAP SHUTTER CONTROL PIN                  |
| 59       | 1186514     | O-RING 02015 SILICON                     |
| 60       | 1186514     | O-RING 02015 SILICON                     |
| 62       | 1324158     | WATER/STEAM TAP PIN                      |
| 63       | 1186985     | FLAT EPDM GASKET ø 15x6x6 mm             |
| 66       | 1186981     | FLAT TEFLON GASKET ø 26x22x2 mm          |
| 68       | 1241513     | BLIND HEXAGONAL NUT M8 UNI 5721          |
| 71       | 1348813     | HEXAGONAL NORM.NUT M4 ST.STEEL UNI 5588  |
| 76       | 1160339     | BLIND FILTER                             |
| 77       | 1160076     | 2 CUPS FILTER 16 gr                      |
| 78       | 1160075     | 1 CUP FILTER 7 gr                        |
| 79       | 1250101     | FILTER BLOCKING SPRING ø 1,00 mm INOX    |
| 80       | 1165041     | FILTER HOLDER PAVONI                     |
| 81       | 1241700     | FILTER HOLDER HANDLE M12                 |
| 82       | 1022504     | CLOSED SINGLE SPOUT ø 3/8"               |
| 83       | 1022501     | SINGLE SPOUT ø 3/8"                      |
| 84       | 1022502     | DOUBLE SPOUT ø 3/8"                      |