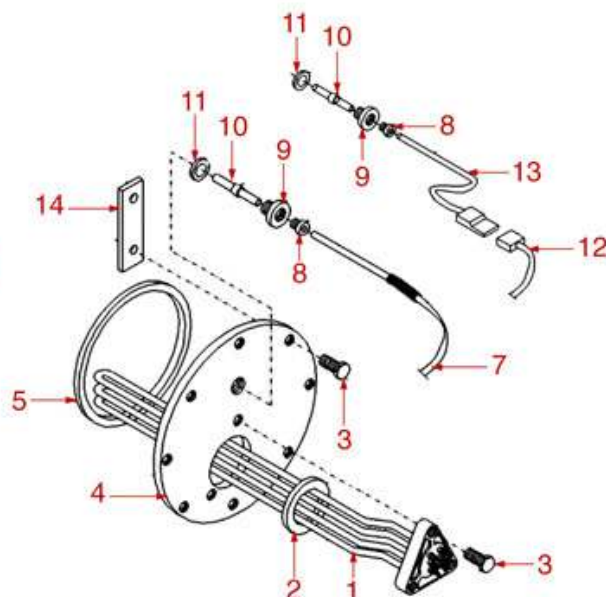
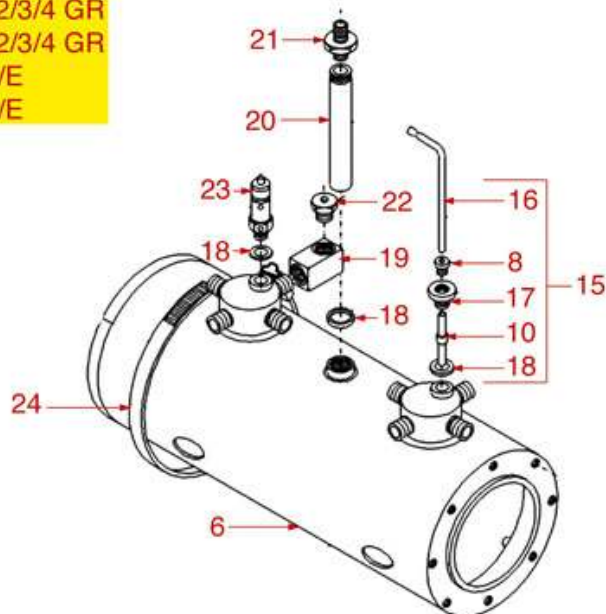
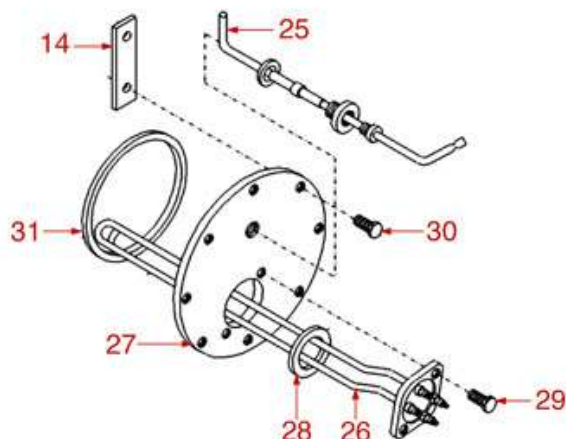
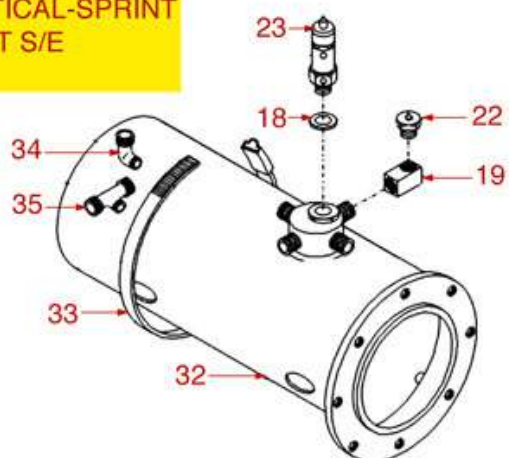


BOILER 100-105-95-85

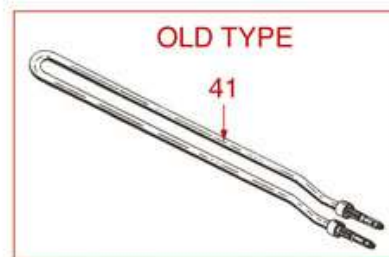
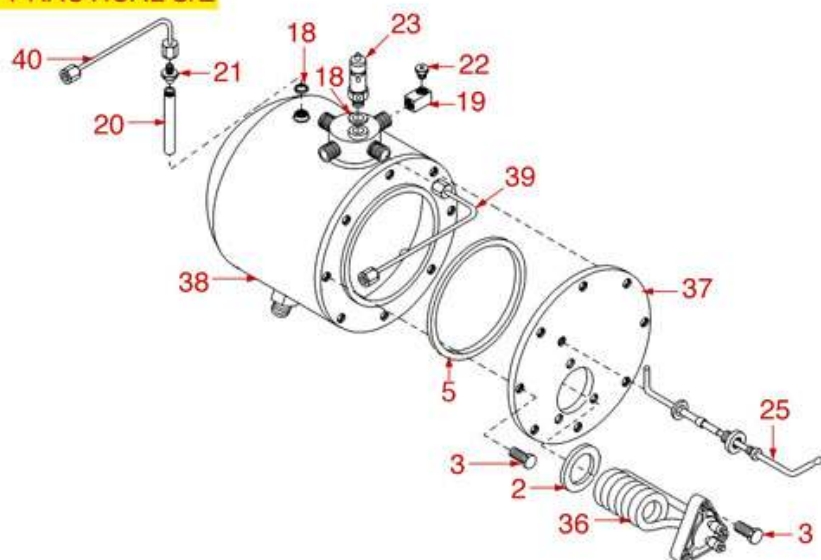
100 2/3/4 GR
105 2/3/4 GR
85 S/E
95 S/E



95 PRACTICAL-SPRINT
85 SPRINT S/E
105 1 GR



85 PRACTICAL S/E





SAN MARCO



Position	LF code no.	Description
1	1755105	HEATING ELEMENT 4000W 230V
1	1755106	HEATING ELEMENT 5500W 230/400V
1	1755114	HEATING ELEMENT 3000W 230V
1	1755126	HEATING ELEMENT 3500W 230/400V
1	1755201	HEATING ELEMENT 3000W 230/400V
1	1755202	HEATING ELEMENT 4500W 230V
2	1186637	FLAT CARBO GASKET ø 56x47x3 mm
3	9528001	STAINLESS STEEL SCREW T.E.M10x25 UNI5739
5	1186566	BOILER GASKET ø 165x150x3 mm
11	1186784	ASBESTOS FREE FLAT GASKET ø 17.5x13x2 mm
15	1341014	LEVEL PROBE ø 3/8"M-142 mm
18	1186140	ROUND COPPER GASKET ø 24x18.4x2 mm
22	1523534	BOILER VALVE ø 1/4"M
22	1523537	BOILER VALVE ø 1/4"M
23	1523543	BOILER VALVE ø M18x1.5 AUTO-CERTIFIED
23	1523572	BOILER VALVE ø 3/8"M - 1,8 bar CE/PED
25	1341012	LEVEL PROBE ø 1/4"M-85 mm
26	1755783	HEATING ELEMENT 4500W 230/400V
26	1755784	HEATING ELEMENT 2000W 230V
26	1755785	HEATING ELEMENT 3000W 230V
28	1186156	ASBESTOS FREE FLAT GASKET ø 50x40x2 mm
28	1186608	PTFE FLAT GASKET ø 50x40x2 mm
29	1528622	S/S SCREW T.E. M8x16 UNI 5739 DIN 24017
31	1186565	BOILER GASKET ø 131x123x3 mm
36	1755203	HEATING ELEMENT 1750W 220V
36	1755781	HEATING ELEMENT 1750W 110V
41	1755196	HEATING ELEMENT 1000W 220V
41	1755197	HEATING ELEMENT 1300W 220V
41	1755198	HEATING ELEMENT 1850W 220V