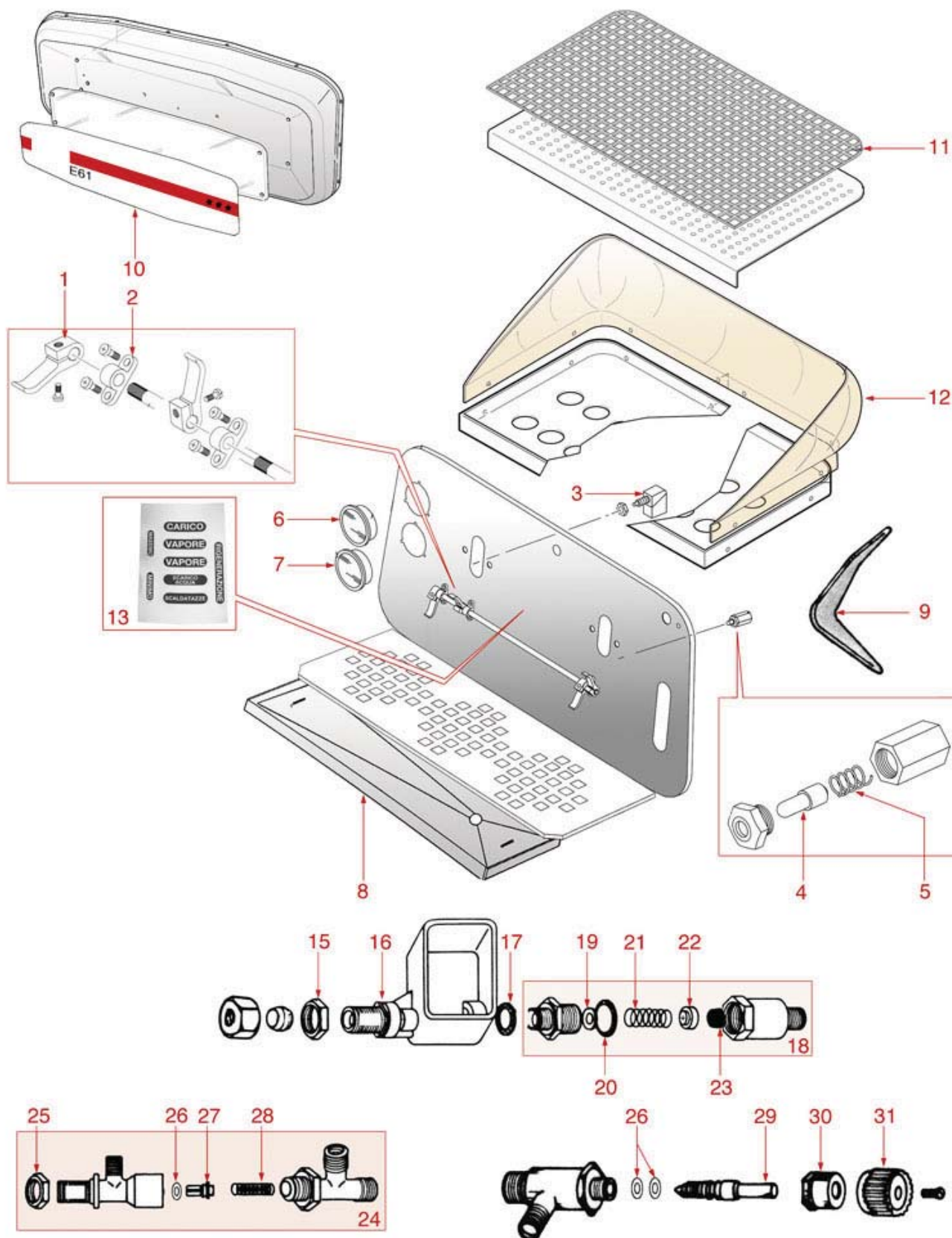




MISCELLANEOUS E61





FAEMA



Position	LF code no.	Description
1	1225014	MICRO CONTROL LEVER
2	1391002	CONTROL LEVER SUPPORT
2	1391008	CHROME-PLATED CONTROL LEVER SUPPORT
3	1240817	MICROSWITCH G4 16A 250V
3	1240821	MICROSWITCH 10A 250V
4	1240066	MICROSWITCH 16A 250V
5	1250024	SPRING ø 8x29 mm FOR MICRO BUTTON
6	1245554	BOILER PRESSURE GAUGE ø 52 mm 0÷3 bar
7	1245553	PUMP PRESSURE GAUGE ø 52 mm 0÷16 bar
9	1026051	BLACK ANGLE E61 (2 PCS)
10	1009002	STICKER E61 1/GR
10	1009003	STICKER E61 2/GR
10	1009004	STICKER E61 3/GR
11	1185701	CUP WARMING GRID FAEMA
11	1185702	WHITE CUP WARMING GRID
11	1185703	BROWN CUP WARMING
12	1026001	COVER E61 - 1 COFFEE GROUP
12	1026002	COVER E61 - 3 COFFEE GROUPS
12	1026003	COVER E61 - 2 COFFEE GROUPS
13	1009001	STICKER E61 SMALL
15	1349504	NUT FOR TAP ø 1/2"
17	1186620	COPPER FLAT GASKET ø 22x17x1.5 mm
18	1523513	EXPANSION VALVE ø 3/8"M-3/8"M
19	1186319	BRASS WASHER ø 15x8x2 mm
20	1186326	TEFLON FLAT GASKET ø 22x16x2 mm
21	1250516	SPRING ø 15x28 mm
22	1186131	GASKET HOLDER FOR TAP
23	1186129	FLAT EPDM GASKET ø 15/6x10 mm
24	1523512	NON-RETURN VALVE ø 3/8"M-1/4"M
25	1349364	NUT ø 3/8"
26	1186411	O-RING 02031 EPDM
27	1523426	SQUARE NON-RETURN VALVE
28	1250202	NON-RETURN VALVE SPRING ø 8x30 mm
31	1241484	CUP WARMER KNOB