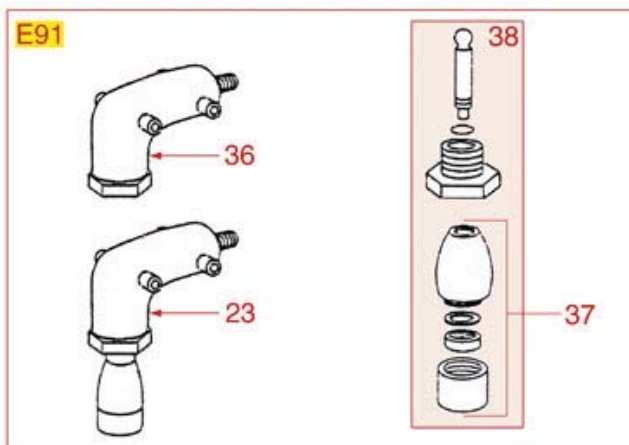
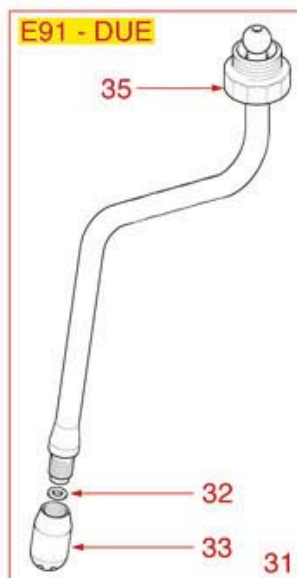
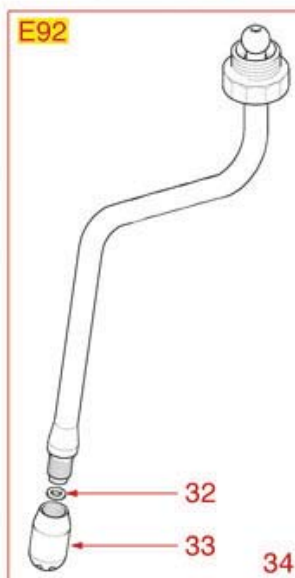
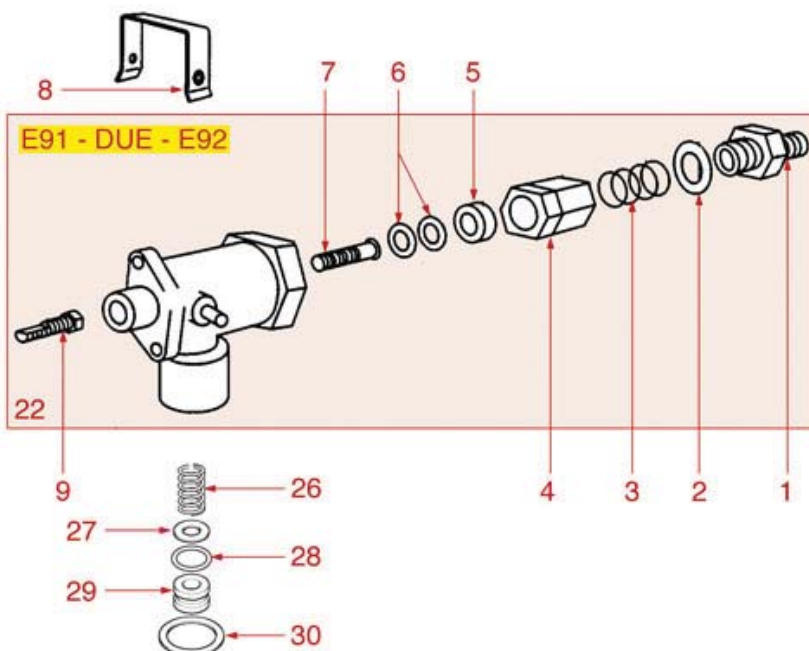
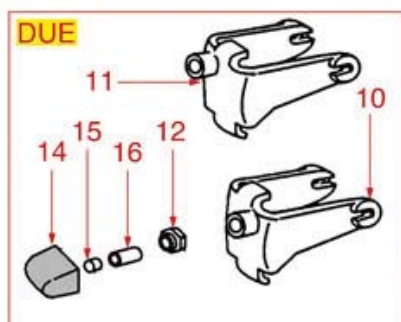
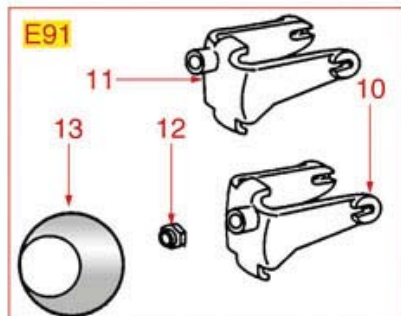




WATER STEAM TAP E91-E92-DUE

E91 - E92 - DUE





FAEMA



Position	LF code no.	Description
1	1349475	TAP FITTING
2	1186823	COPPER FLAT GASKET ø 27x21.5x1 mm
3	1250404	GROUP SPRING ø 11x41 mm
4	1523507	TAP VALVE
5	1186311	NBR FLAT GASKET ø 13x4x4 mm
5	1186822	VITON FLAT GASKET ø 13x4x4 mm
5	5053833	FLAT GASKET VITON ø 13x4x4 mm NSF
6	1186252	O-RING R3 EPDM
7	1324071	WATER-STEAM TAP PIN
7	1324160	WATER/STEAM TAP PIN
9	1324002	STEAM TAP PIN
10	1255003	KNOB BODY RH-LH
11	1255003	KNOB BODY RH-LH
12	1348041	HEXAGONAL SELF-LOCKING NUT M8 UNI 7473
13	1241319	WATER/STEAM TAP KNOB
13	1241320	WATER/STEAM TAP KNOB
14	1241362	WATER/STEAM TAP KNOB
15	3241084	ELASTIC RING FOR KNOB
16	1241036	KNOB SPACER
17	1324075	KNOB PIN
18	1255002	KNOB BODY LH
19	3060069	S/STEEL HEXAGONAL MEDIUM NUT M8 UNI 5588
20	1241069	WATER/STEAM TAP KNOB
21	1255001	KNOB BODY RH
22	1348309	STEAM TAP E91-DUE
26	1250408	SWIVEL SPRING ø 13x21 mm
27	1186319	BRASS WASHER ø 15x8x2 mm
28	1186236	O-RING 03043 VITON
29	1186247	CONICAL TEFLON SEAL ø 15x7.5x10.3 mm
30	1186248	TEFLON FLAT GASKET ø 27x20x1 mm
31	1449346	COMPLETE STAIN. STEEL STEAM PIPE ø 10 mm
32	1186121	TEFLON FLAT GASKET ø 12x10x0.5 mm
33	1449043	STEAM NOZZLE
34	1449041	STAINLESS STEEL STEAM PIPE COMPL. ø 10mm
34	1449347	STAINLESS STEEL STEAM PIPE COMPL. ø 10 m
35	1349472	STEAM TAP FITTING
36	1349474	ELBOW FITTING FOR TAP
37	1449196	WATER SPRINKLER
38	1449148	STAINLESS STEEL COMPLETE WATER PIPE