

Repair Parts List

MODEL NUMBER

CHDC5182

MANUFACTURING
NUMBER

P1333125M

COMMERCIAL MICROWAVE

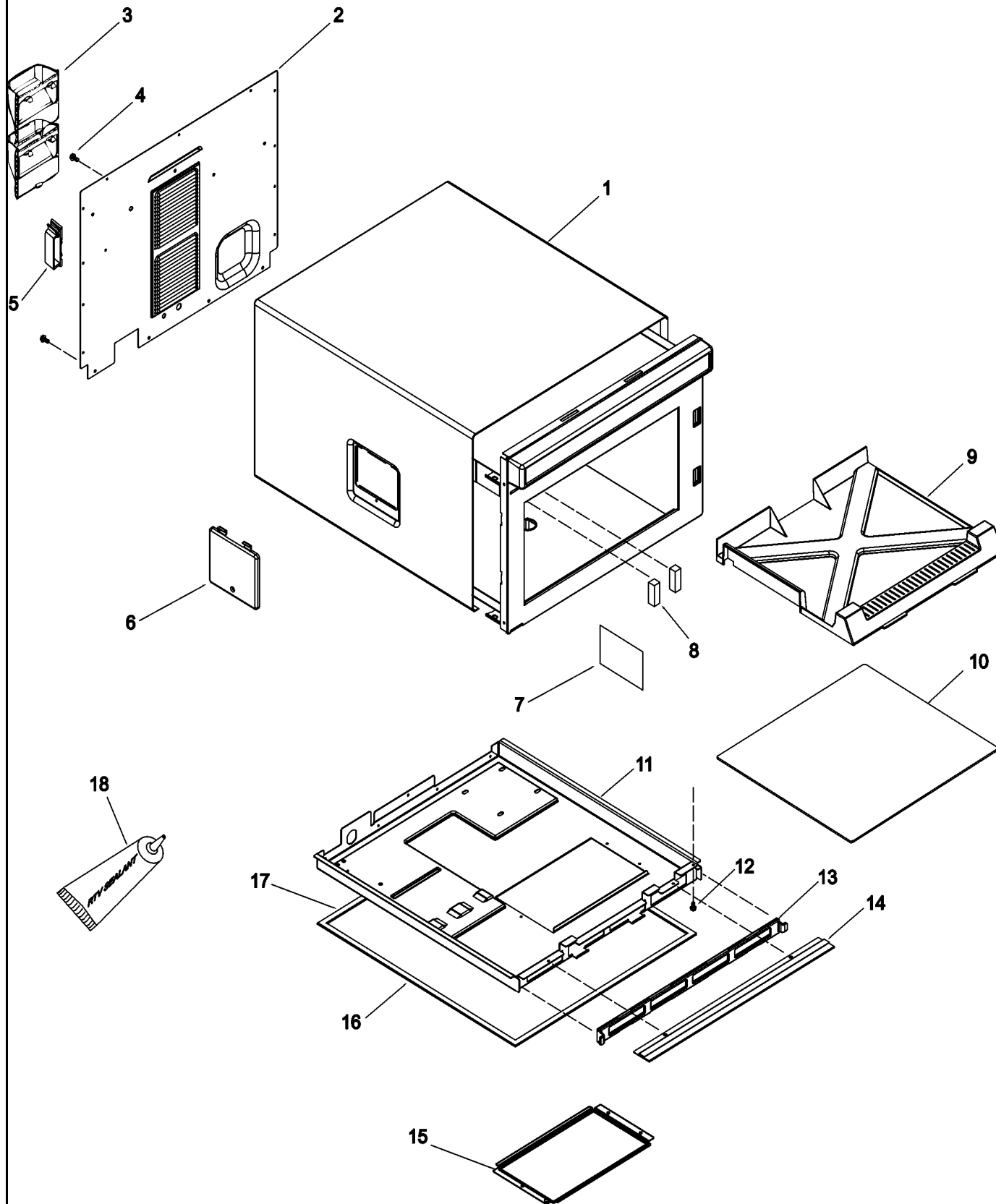
When requesting service or ordering parts, always
provide the following information:

- Product Type
- Part Number
- Model Number
- Part Description



Section: TRAY, GREASE SHIELD, CABINET,

Model: CHDC5182_P1333125M

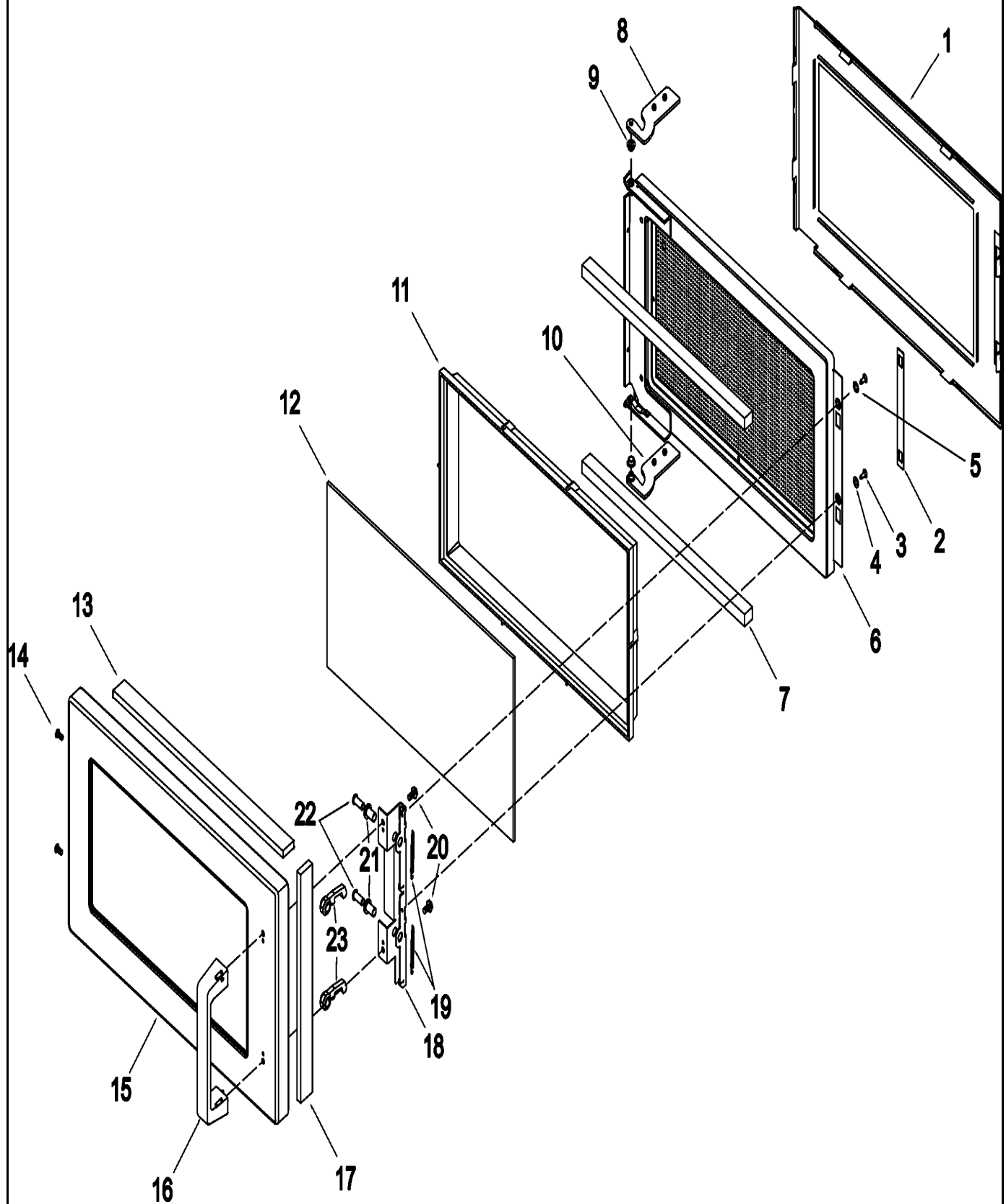


Section: TRAY, GREASE SHIELD, CABINET,

No.	Part No.	Description	Series Qty
1	12408501	WRAPPER, OUTER CASE	1
2	12296804	PAN, ACCESS-E CT	1
3	12296601	DUCT, AIR	2
4	12990525	SCREW-SM/HEX	17
5	M0118705	CLIP, GUIDE	1
6	10785608	COVER LIGHT (SS)	1
-	13042002	SCREW-TF/OVAL	1
-	M0274072	SPACER, RUBBER	1
7	R9900114	ASSY, WINDOW KIT (LIGHT LENS)	1
8	12496801	SUPPORT, SHELF	2
9	12126601	SHIELD-GREASE	1
10	R0150144	TRAY-CERAMIC FLOOR W/SEALER	1
11	59002074	ASY, BASE PAN 50 HZ	1
12	12990524	SCREW-SM/HEX	1
13	59001659	SCREEN FILTER	1
14	59002068	TRIM-OC	1
-	67006408	SCREW, SM HEX HEAD	2
15	12486002	BASE COVER, E CT	1
-	12990522	SCREW-SM/HEX	3
16	59001643	GASKET,BASEPAN - CUT	2
17	59001642	GASKET,BASEPAN - CUT	2
18	M0275598	SEALER	1

Section: DOOR

Model: CHDC5182_P1333125M

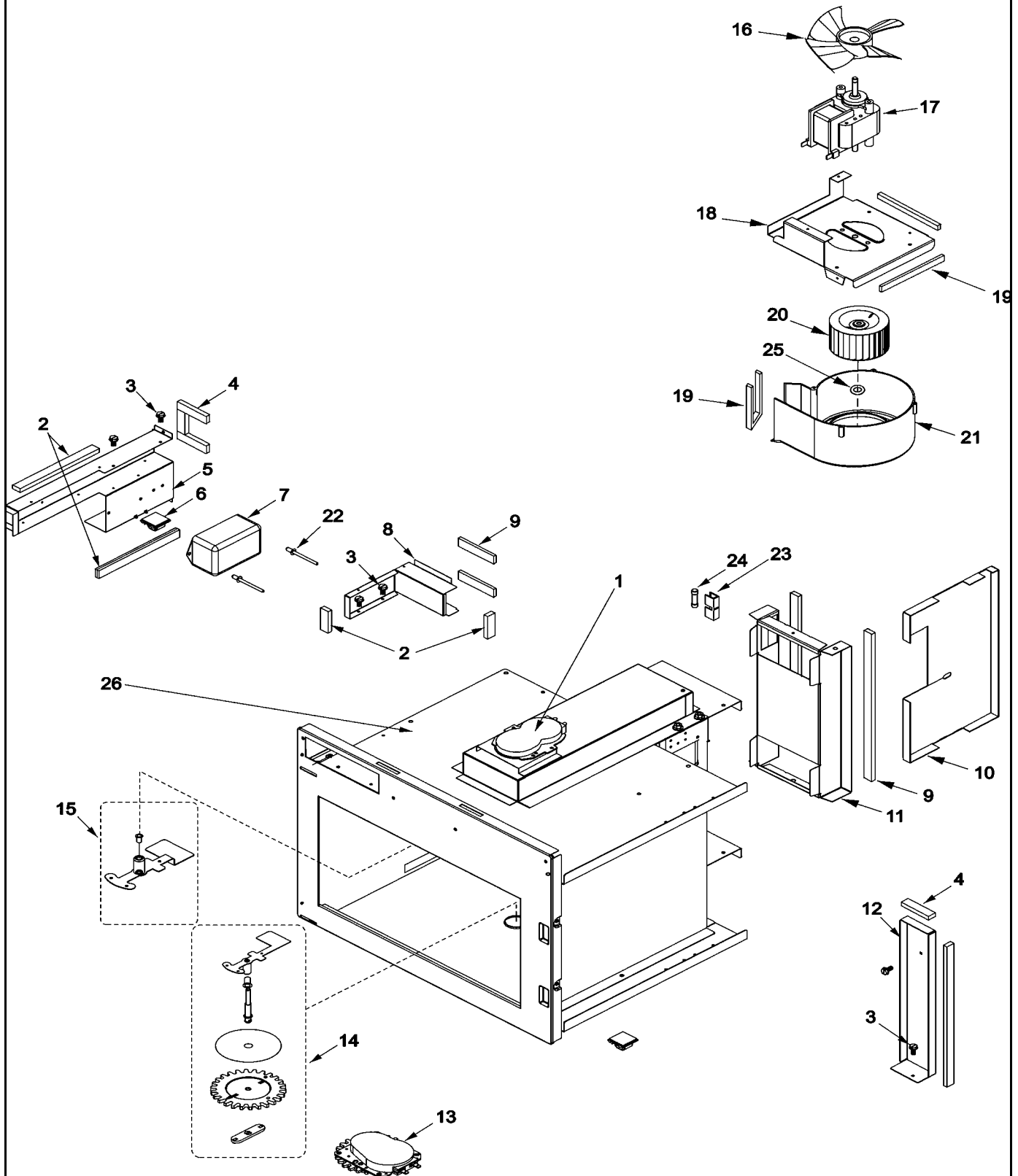


Section: DOOR

No.	Part No.	Description	Series Qty
1	R0150148	ASSY, INNER DOOR***	1
2	12526201	LINKAGE, DR LATCH	1
3	13047402	SCREW-TC/FLAT	2
4	M0274066	WASHER, NYLON	1
5	M0272503	WASHER	1
6	12472202	DOOR RING WELD, E CT	1
7	10966601	GASKET, NEOPRENE	2
8	12126805	PLATE, HINGE (UPPER)	1
9	5210001001	BUSHING, NYLON	2
10	12126806	PLATE, HINGE (LOWER)	1
11	R0150147	RETAINER, LENS	1
12	59001236	WINDOW-OUTER	1
13	12210803	ENERGY, STRIP	1
14	12990402	SCREW-SM/TRUSS	2
15	R9900567	DOOR, OUTER	1
16	12133901	HANDLE-DOOR	1
17	12210804	ENERGY, STRIP	2
18	12114401	BRKT-DOOR LATCH	1
19	C8893502	SPRING, DOOR LATCH	2
20	12992307	SCREW-TF/HEX	2
21	M0800501	SPACER	2
22	59002069	PIN-LATCH	2
23	12126901	LATCH-DOOR	2

Section: FUSES, ANTENNAS, BLOWER, DUCTS,

Model: CHDC5182_P1333125M

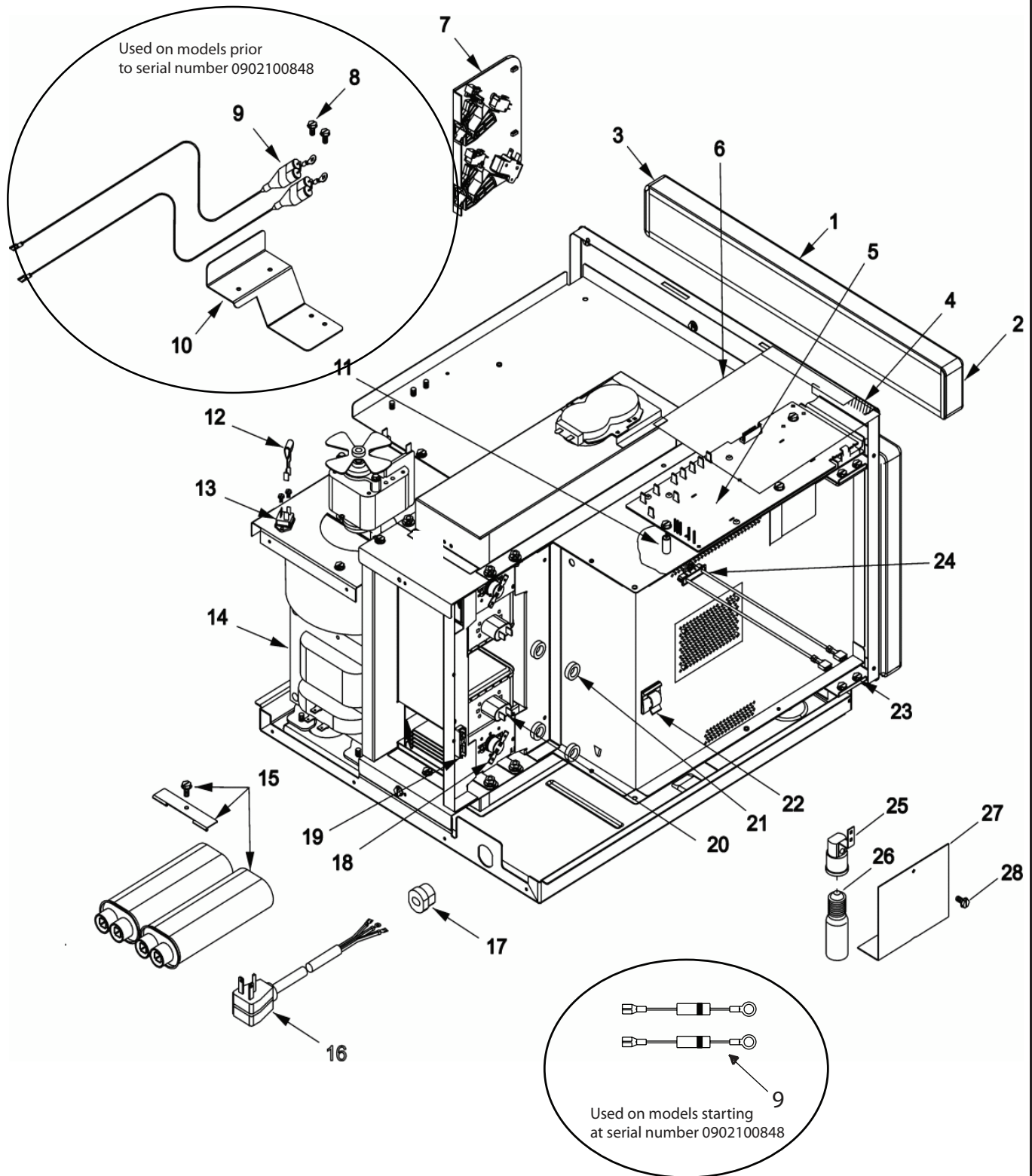


Section: FUSES, ANTENNAS, BLOWER, DUCTS,

No.	Part No.	Description	Series Qty
1	R0150197	MOTOR-STIRRER (230V)	1
2	A3030330	GASKET,PER FT	5
3	12990522	SCREW-SM/HEX	6
4	A3030330	GASKET,PER FT	3
5	12135604	DUCT,CAV EXH-E CT	1
6	M0104106	CLIP	2
7	59001893	LINE FILTER	1
8	12135704	ASSY, EXHAUST DUCT KIT	1
9	10839706	GASKET (PER FOOT)	4
10	59002000	FLOW DIVIDER	1
11	59001558	DUCT-MAG OUTLET	1
12	12525701	BARRIER, AIR	1
13	R9900668	KIT,ANTENNA MOTOR(230V)	1
14	R9900585	KIT,ANTENNA(BOTTOM)	1
15	R0150185	ASSY, ANT/RETAINER	1
16	B5706704	FAN BLADE	1
17	12138105	BLOWER MOTOR	1
18	12271103	BRKT, BLOWER MTG	1
19	A3030330	GASKET,PER FT	3
20	12138201	WHEEL-BLOWER	1
21	12138302	SCROLL-BLOWER	1
22	A4539638	RIVET-POP	2
-	12990606	SCREW-SM/PAN	1
23	10091101	FUSE HOLDER	1
24	M0805203	FUSE,20 AMP	1
25	M0118901	CLIP	1
26	12002678	CAVITY KIT- HDC18, 21	1

Section: ELECTRICAL COMPONENTS

Model: CHDC5182_P1333125M



Section: ELECTRICAL COMPONENTS

No.	Part No.	Description	Series Qty
-	12990523	SCREW-SM/HEX	4
1	R9900111	ASSY, TOUCH PANEL	1
2	12131001	ENDCAP-ESC (RIGHT)	1
3	12131002	ENDCAP-ESC (LEFT)	1
4	M0275163	TAPE PER ROLL	1
5	59004111	HV/LV BOARD	1
-	12991607	SCREW-TC/HEX	3
6	12160602	SHIELD, SPILL	1
7	59002060	ASSY, INTERLOCK SWITCH	1
-	12993002	SCREW-HI LO/PAN	2
8	12990522	SCREW-SM/HEX	2
9	R9800022	KIT, DIODE (used prior to serial number 0902100848)	2
-	13091701	DIODE (used starting at serial number 0902100848)	2
10	12529501	BRACKET, DIODE	1
-	12990522	SCREW-SM/HEX	2
11	M0308801	CAP, PROTECTIVE-THREADED (RED)	2
12	59002017	SNUBBER ASSEMBLY	1
13	R0157373	KIT, TRIAC ASSY	1
-	12990523	SCREW-SM/HEX	2
-	12991606	SCREW-TC/HEX	4
14	59001993	TRANSFORMER	1
15	59001651	CAPACITOR-.85	2
-	12132501	STRAP-CAPACITOR	1
-	12990522	SCREW-SM/HEX	1
16	59002001	CORD, POWER	1
17	M0370009	RELIEF- STRAIN	1
-	12991607	SCREW-TC/HEX	4
18	B5684129	CUT OUT, THERMAL	2
18	B8380601	PLATE, THERMAL CUTOUT	2
19	B5677203	TERMINAL BLOCK	1
-	12990606	SCREW-SM/PAN	1
20	D7831007	MAGNETRON-T	2
21	44780P01	TOROID (ARC SUPPRESSOR)	1
22	M0104106	CLIP	1
23	13048901	SCREW-TF/HEX	4
24	59001874	THERMAL CUT OUT	1
-	13041801	SCREW-TC/PAN	1
25	12163802	RECEPTACLE-EXPORT	1
26	59002071	LIGHT BULB	1
27	12544201	BARRIER,LAMP	1
28	12992307	SCREW-TF/HEX	1
29	12002678	CAVITY KIT- HDC18, 21	1

12/09

*Color Code (-)=Not Shown #=Series, Serial Prefix or Run No., N=Not Available

Section: SUPPLEMENTAL INFORMATION

No.	Part No.	Description	Series Qty
1	N RS5320013	MNL,SVC-INT'L COMM'L MICRO	1
2	N 59001618	MANUAL-OWNERS	1
3	N 16027379	MANUAL-PROD SAFETY	1
4	N 59002059	INSTR-QUICK START	1
5	R0193551	BIT FOR TORX 15H DRIVE SCREWS	1
6	20026701	HARNESS-OVEN	1
7	59002065	HARNESS, HI VOLT	1
8	59002066	HARNESS, LW ANTENNA	1
9	16027612	TECH SHT, COMM MICRO	1

Section: WIRING INFORMATION

Model: CHDC5182_P1333125M

