

Parts Information

Commercial Microwave Oven

Important notes:

This is an uncontrolled document.

There is no record of its distribution and no corrections will be provided.

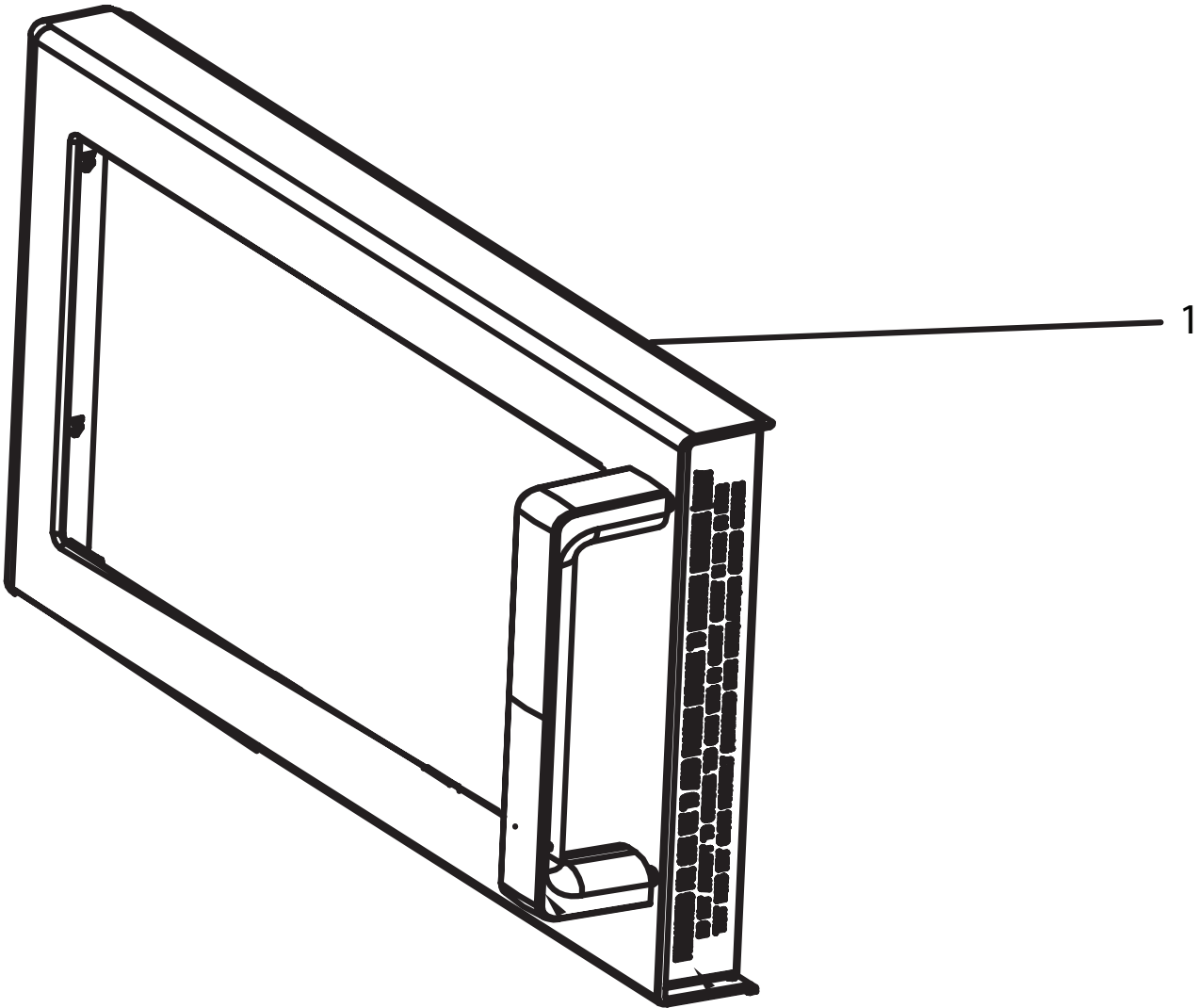


Models and Manufacturing numbers covered:

RMS510T P2001205M

RMS510TS P2001206M

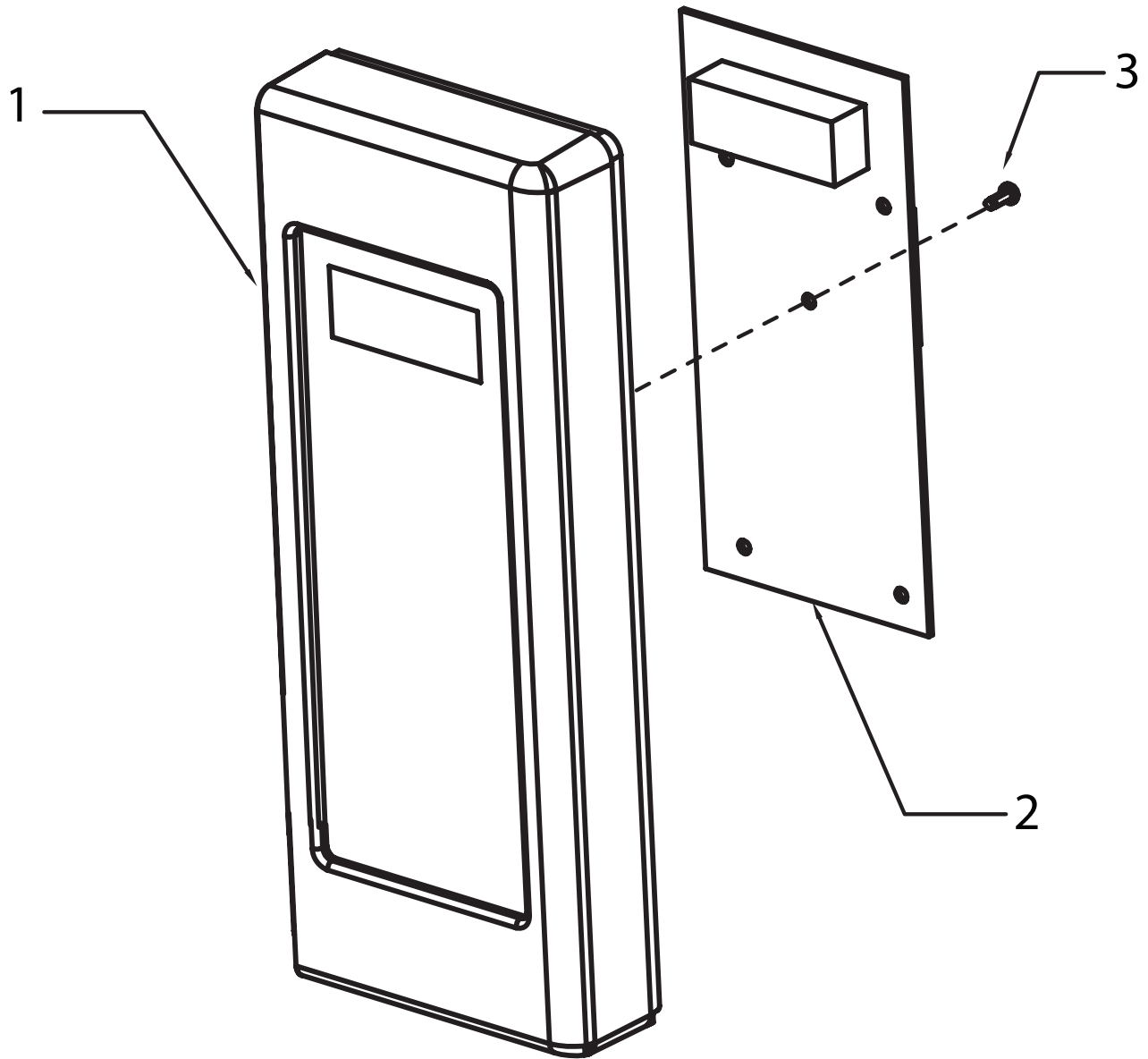
DOOR



DOOR

Reference	Part Number	Description	Quantity
1	58101013	DOOR ASSY, MENUMASTER	1

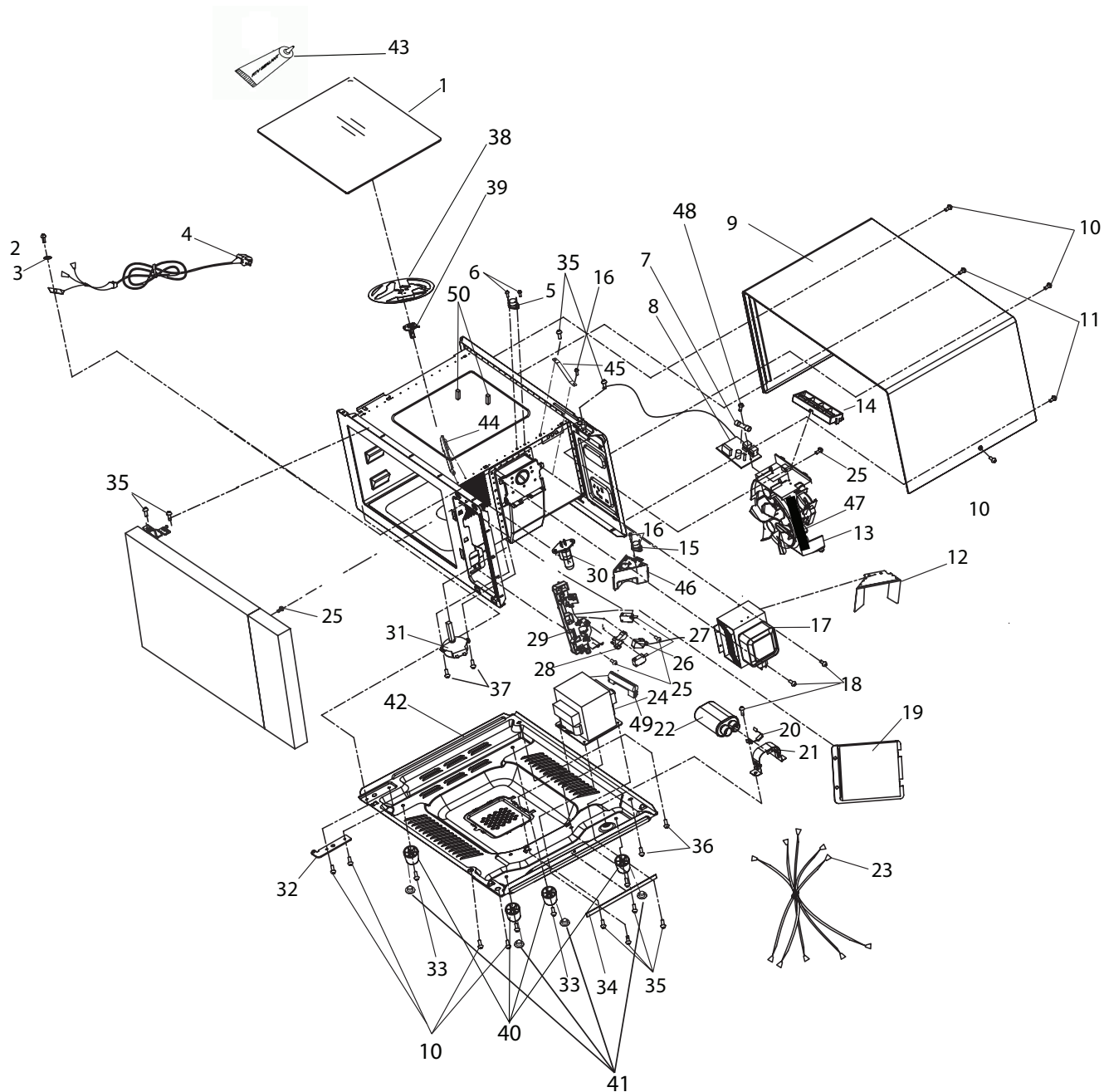
ELECTRONIC CONTROL



ELECTRONIC CONTROL

Reference	Part Number	Description	Quantity
1	58101006	ESCUTCHEON / TOUCH PANEL ASSY	1
2	58101011	BOARD, HV/LV	1
3	58101041	SCREW	4

OVEN CAVITY



OVEN CAVITY

Reference	Part Number	Description	Quantity
1	58101001	TRAY, CERAMIC	1
2	58101047	SCREW	1
3	58101051	WASHER, LOCK	1
4	58101027	POWER CORD	1
5	58101030	THERMAL CUTOUT, CAVITY	1
6	58101041	SCREW	2
7	20034002	FUSE	1
8	58101022	FUSE BLOCK / FILTER ASSY	1
9	58101059	WRAPPER	1
10	58101044	SCREW	3
11	58101068	TAMPER RESISTANT SCREW	2
12	58101040	WIND PREVENTER	1
13	58101056	BLOWER MOTOR ASSY	1
14	58101033	SPACER	1
15	58101032	THERMAL CUTOUT, MAG	1
16	58101041	SCREW	2
17	53002004	MAGNETRON	1
18	58101047	SCREW	2
19	58101060	GUIDE, AIR- RIGHT	1
20	58101020	DIODE	1
21	58101057	BRACKET, CAPACITOR	1
22	58101019	CAPACITOR, 1.1	1
23	58101037	HARNESS, MAIN	1
24	58101017	TRANSFORMER, HV	1
25	58101045	SCREW	2
26	59002157	SWITCH, MONITOR	1
27	56001036	SWITCH, INTERLOCK- PRIMARY	2
28	58101035	LEVER	1
29	58101034	BRACKET, SWITCH	1
30	58101024	LAMP ASSEMBLY	1
31	58101053	MOTOR, ANTENNA	1
32	58101066	BRACKET, HINGE	1
33	58101043	SCREW	4
34	59004077	GASKET	1
35	58101047	SCREW	4
36	58101044	SCREW	4
37	58101050	SCREW	2
38	58101058	BLADE, STIRRER	1
39	58101054	SHAFT, STIRRER	1
40	58101003	FOOT	4
41	58101004	PLUG, FOOT	4
42	58101002	BASEPAN	1
43	59002167	SEALER, RTV	1
44	58101039	BRACKET, SUPPORT	1
45	58101067	BRACKET, SUPPORT - MAG	1
46	58101038	DEFLECTOR	1
47	A3030374	GASKET	2
48	58101049	SCREW	1
49	58101028	FUSE, HV	1
50	58101069	SPACER	2

WIRING DIAGRAM

