



URNEX® TRAINING

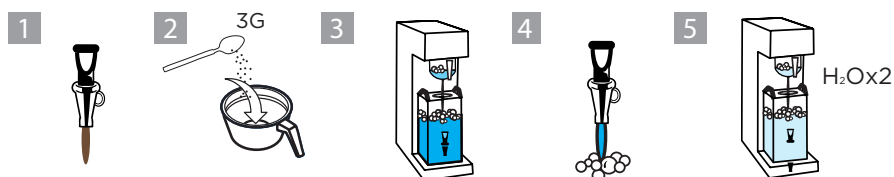


CAFIZA2™ COFFEE EQUIPMENT CLEANER



INSTRUCTIONS FOR DAILY USE:

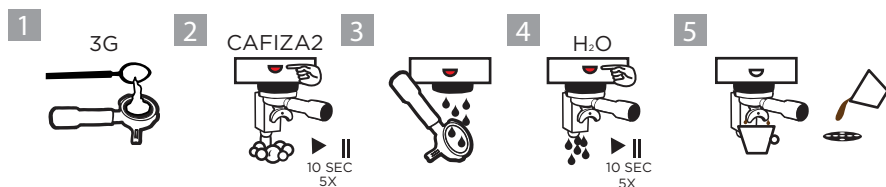
1. DISCARD ALL COFFEE FROM VESSEL.
2. ADD 3G CAFIZA2™ POWDER TO CENTER OF BREW BASKET.
3. RUN BREW CYCLE INTO SERVER AND HOLD.
4. DISCARD SOLUTION AND REMOVE ANY RESIDUE.
5. RINSE ALL PARTS WITH CLEAN WATER.



INSTRUCTIONS FOR DAILY USE:

BACKFLUSH (EACH GROUP HEAD)

1. INSERT BLIND FILTER IN PORTA-FILTER AND ADD 3G CAFIZA2™ POWDER. INSERT PORTA-FILTER INTO GROUP HEAD.
2. ACTIVATE BREW CYCLE FOR 10 SECONDS. STOP 10 SECONDS. REPEAT 5 TIMES.
3. REMOVE PORTA-FILTER. ACTIVATE BREW CYCLE AND RINSE PORTA-FILTER IN STREAM OF WATER FROM GROUP HEAD. STOP CYCLE.
4. INSERT PORTA-FILTER INTO GROUP HEAD. REPEAT STEP (2) WITHOUT CAFIZA2™ POWDER 5 TIMES.
5. MAKE AND DISCARD A CUP OF ESPRESSO TO ENSURE NO RESIDUE REMAINS.



INSTRUCTIONS FOR DAILY USE:

SOAK PORTAFILTERS, SCREENS AND DIP TRAYS

1. USE ONE (1) TEASPOON (6G) OF CAFIZA2™ POWDER IN A LARGE CONTAINER OR TRAY CONTAINING 1L OF HOT WATER (SELECT A VESSEL LARGE ENOUGH TO SUBMERGE THE DIRTY METAL PARTS - NOT PLASTIC HANDLE).
2. ALLOW PARTS TO SOAK IN SOLUTION FOR UP TO 30 MINUTES.
3. EMPTY VESSEL AND RINSE ALL PARTS WITH CLEAN WATER.



URNEX BRANDS, INC

SPECIALIZED EQUIPMENT CLEANERS SINCE 1936

700 EXECUTIVE BLVD ELMSFORD, NY 10523 • TEL 914.963.2042 • FAX 914.963.2145

www.urnex.com