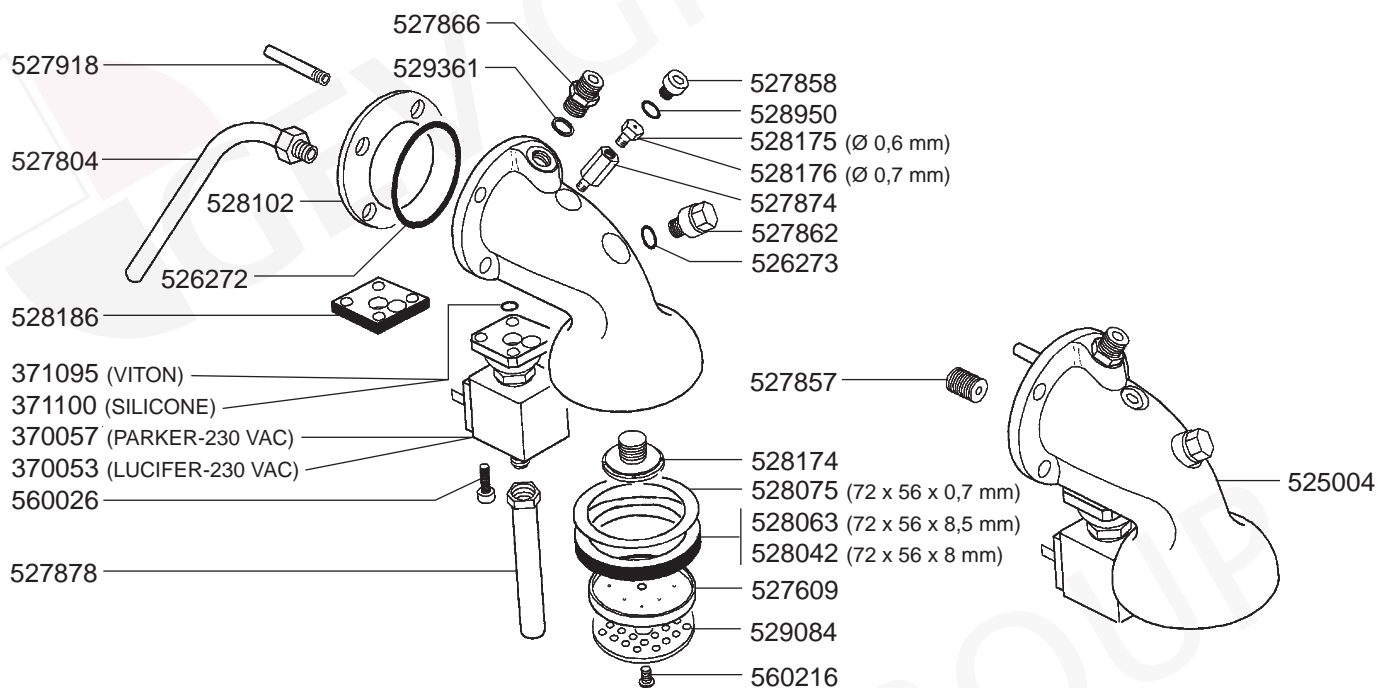
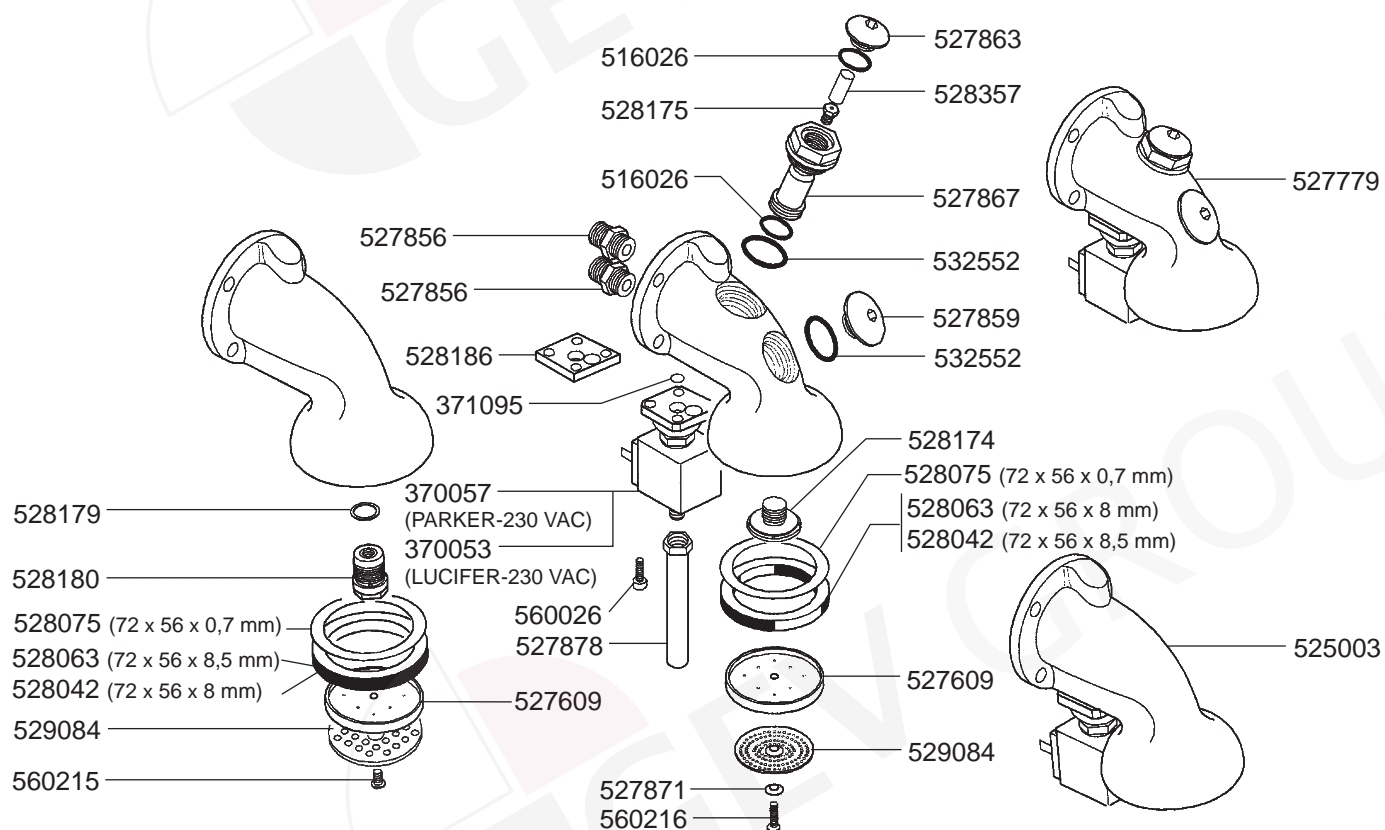


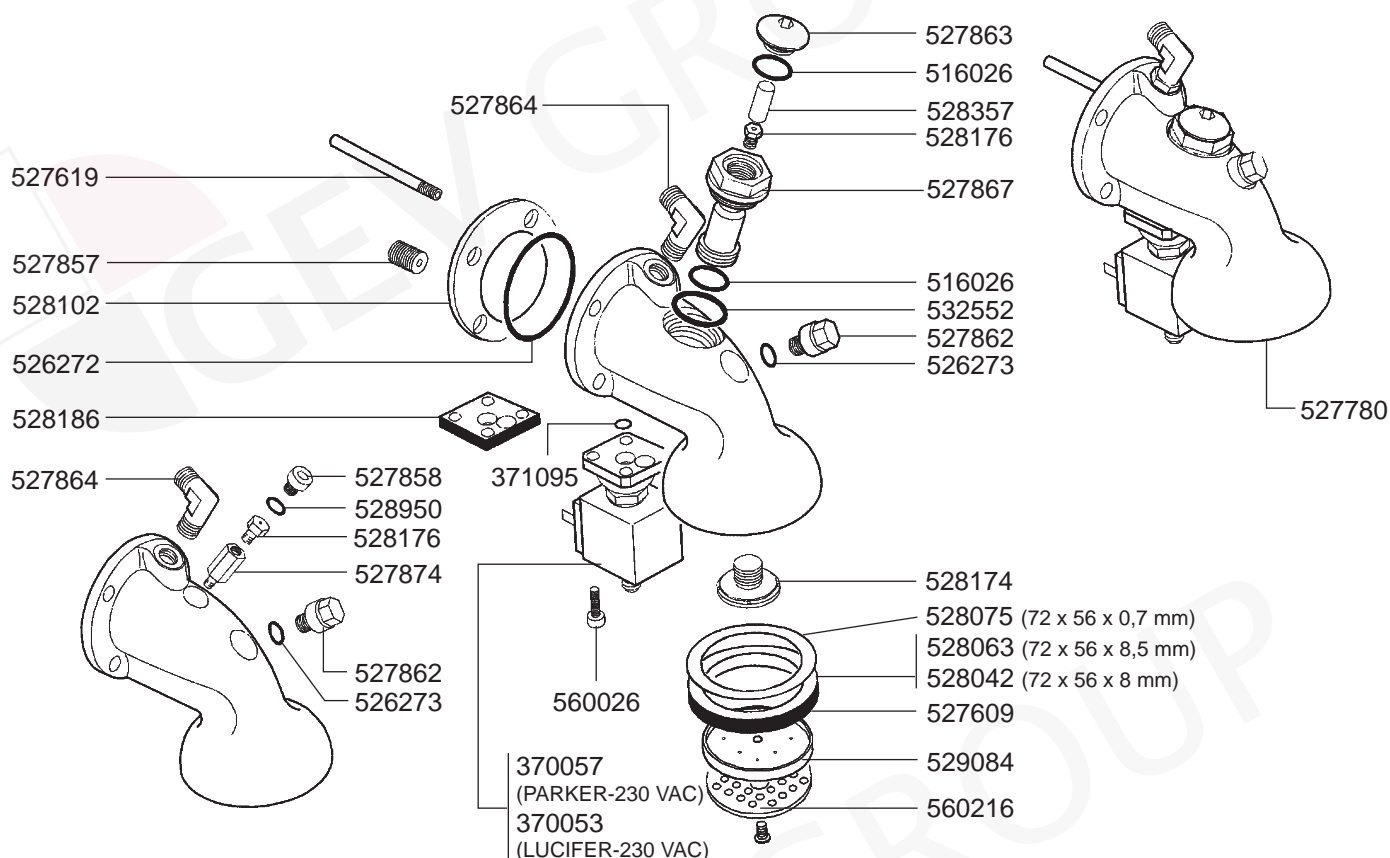
## GROUP ESTRAIBILE



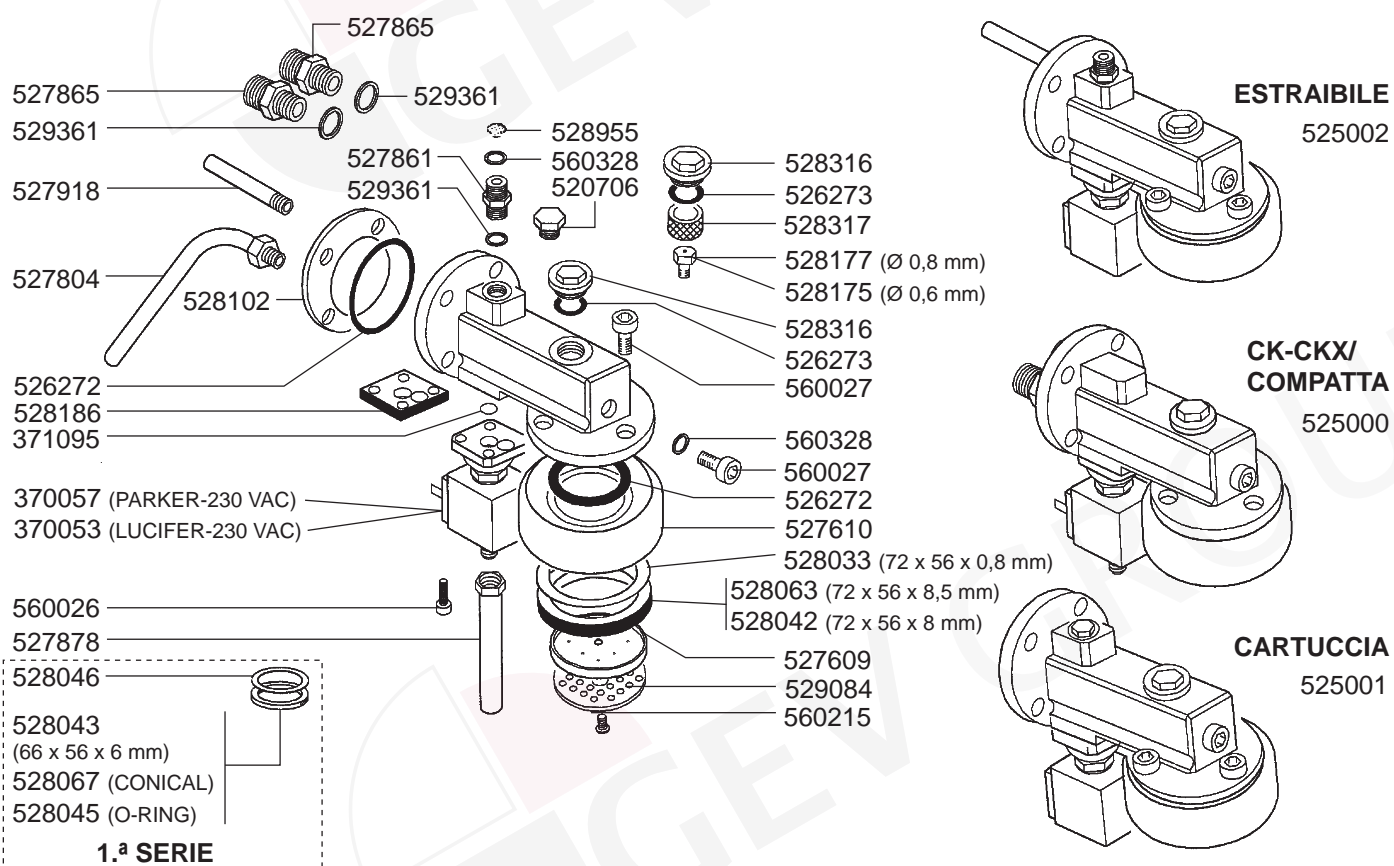
## GROUP CTS



## GROUP SIBILLA



## GROUP VARIOUS

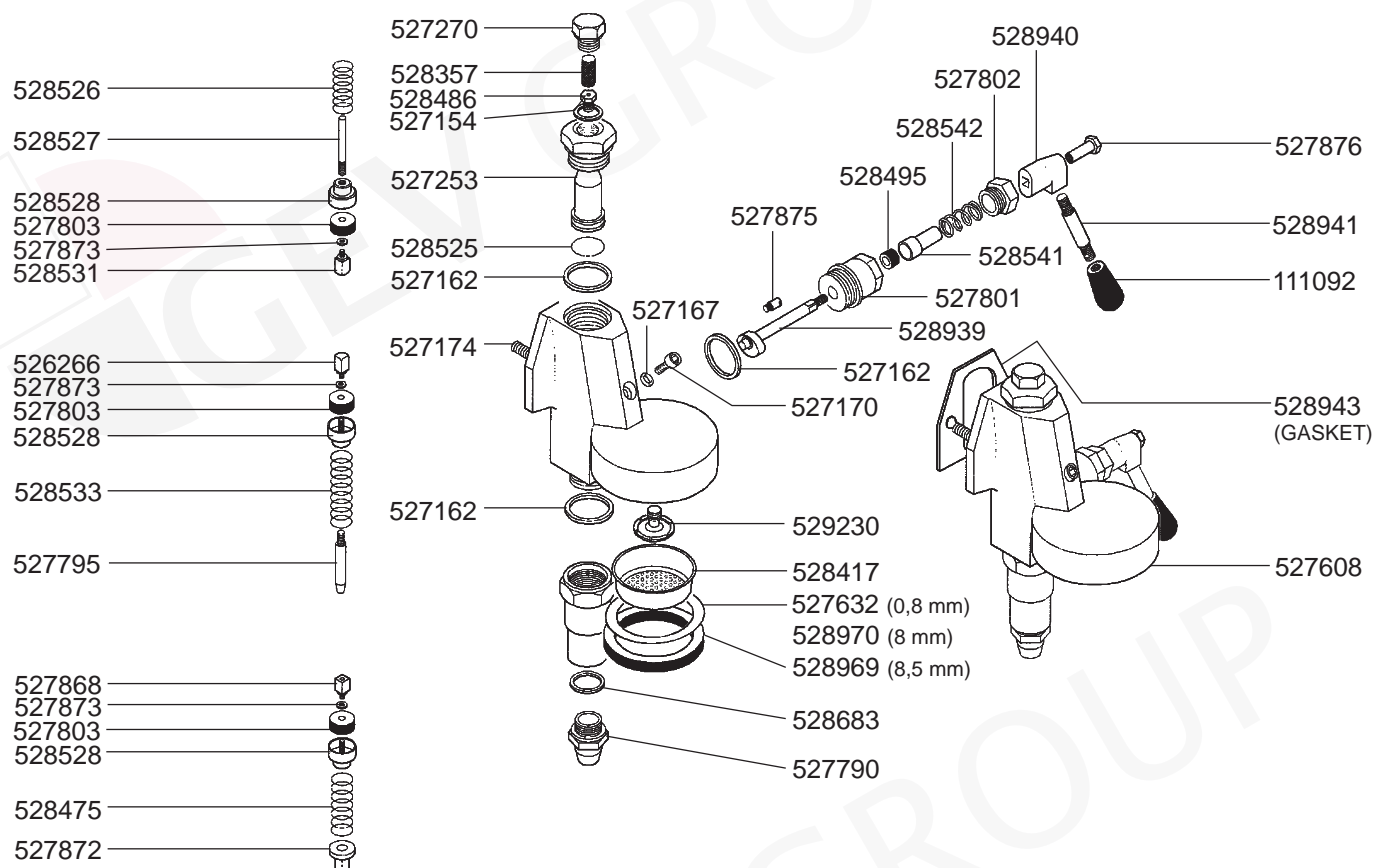


## FILTER HOLDERS

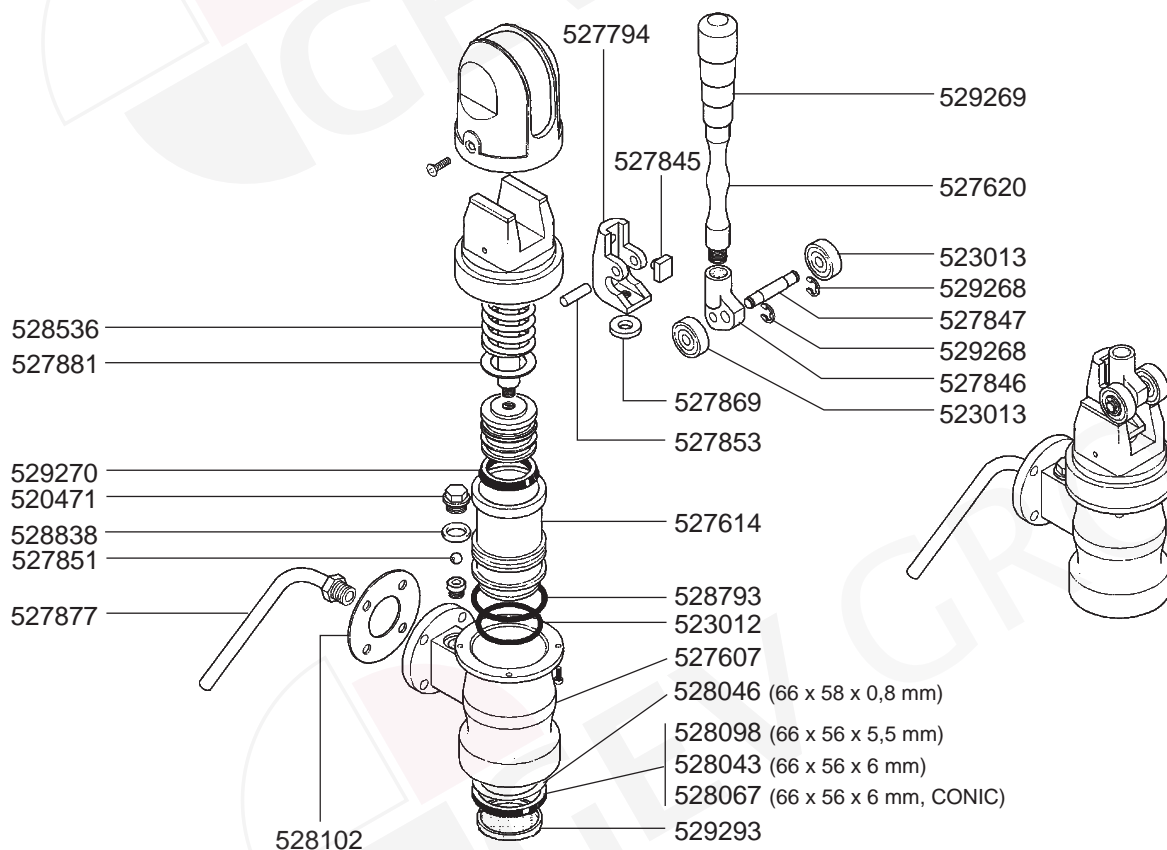




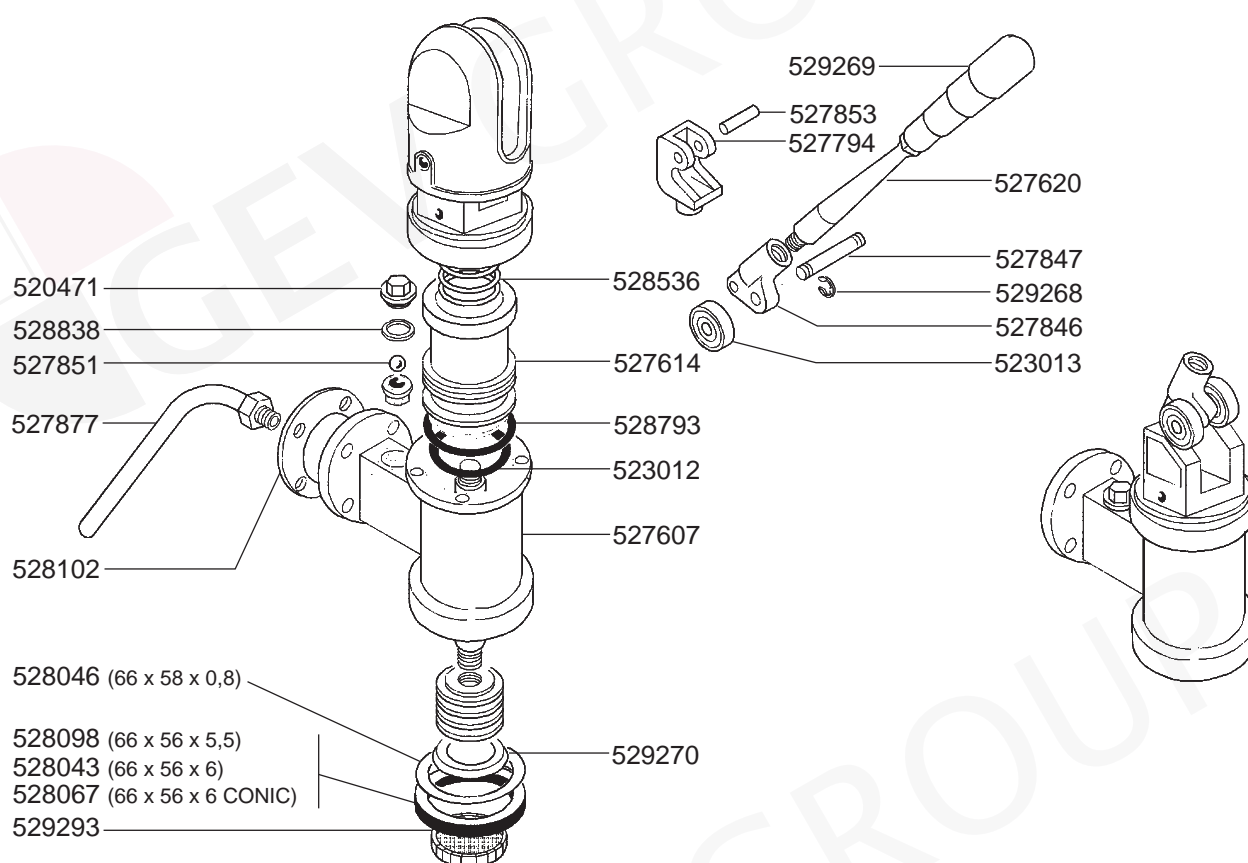
## GROUP LEVETTA



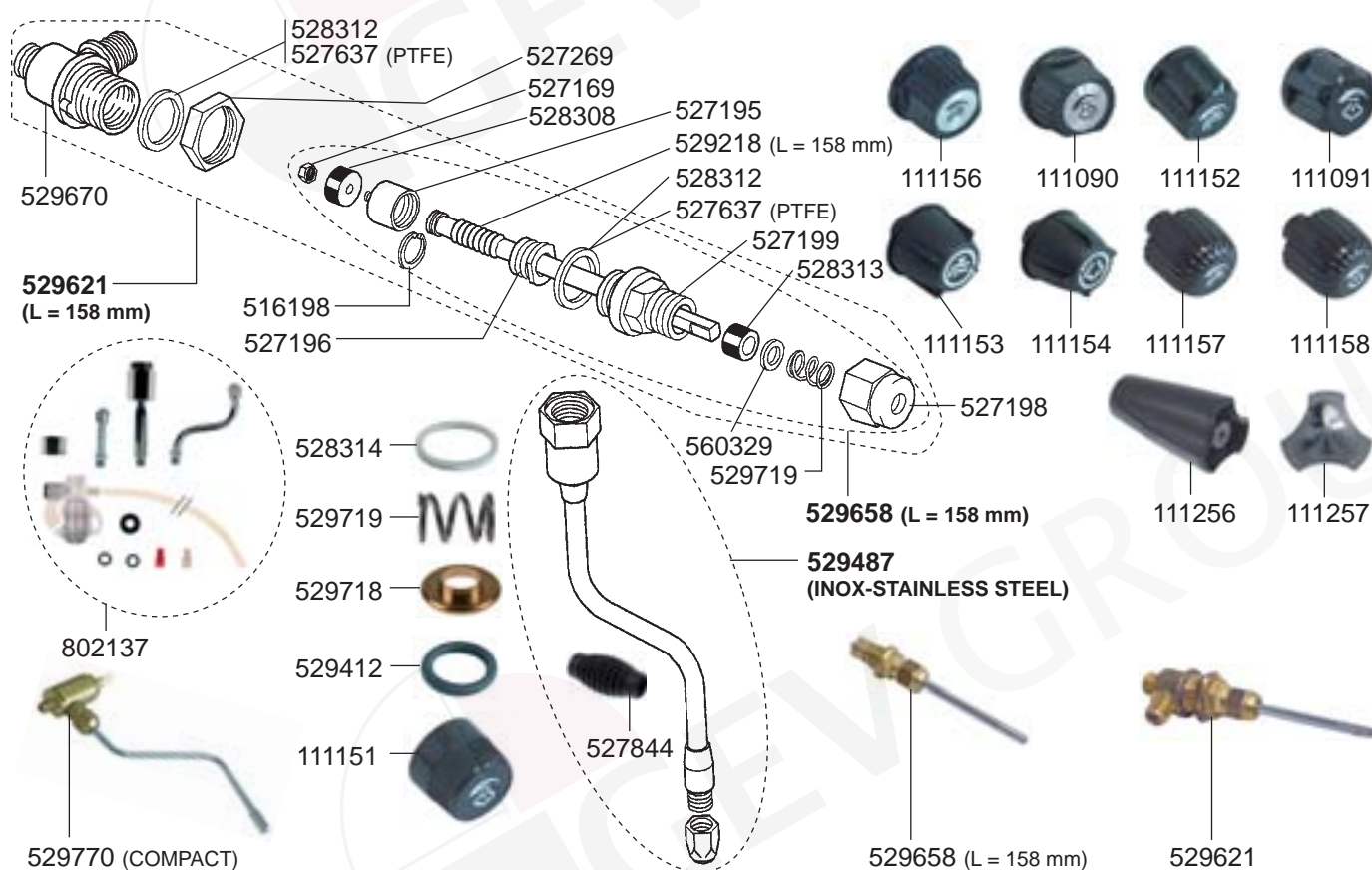
## GROUP AL-SMMA



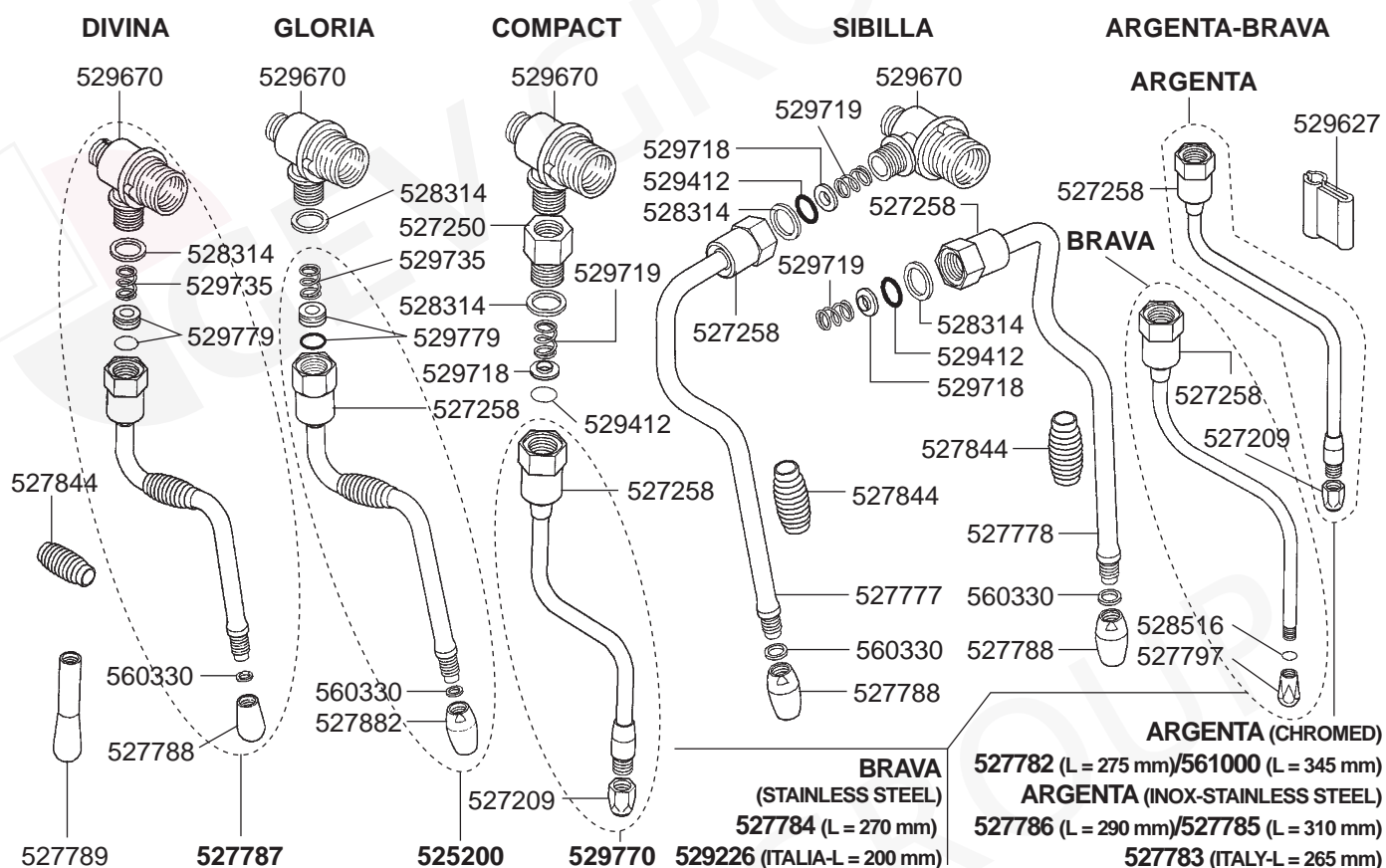
## GROUP AL-SMMA



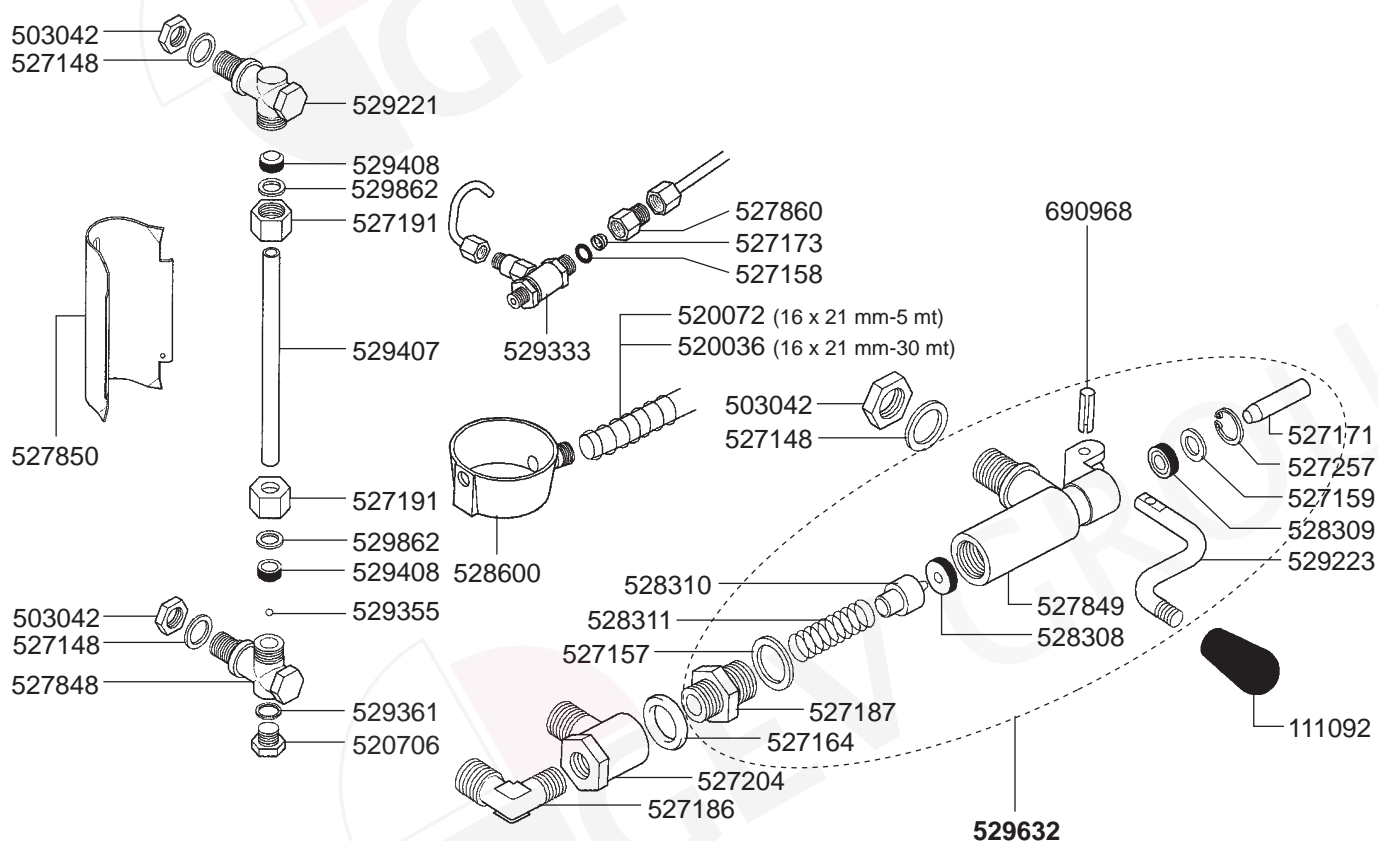
## STEAM/WATER TAPS



## STEAM/WATER TAPS

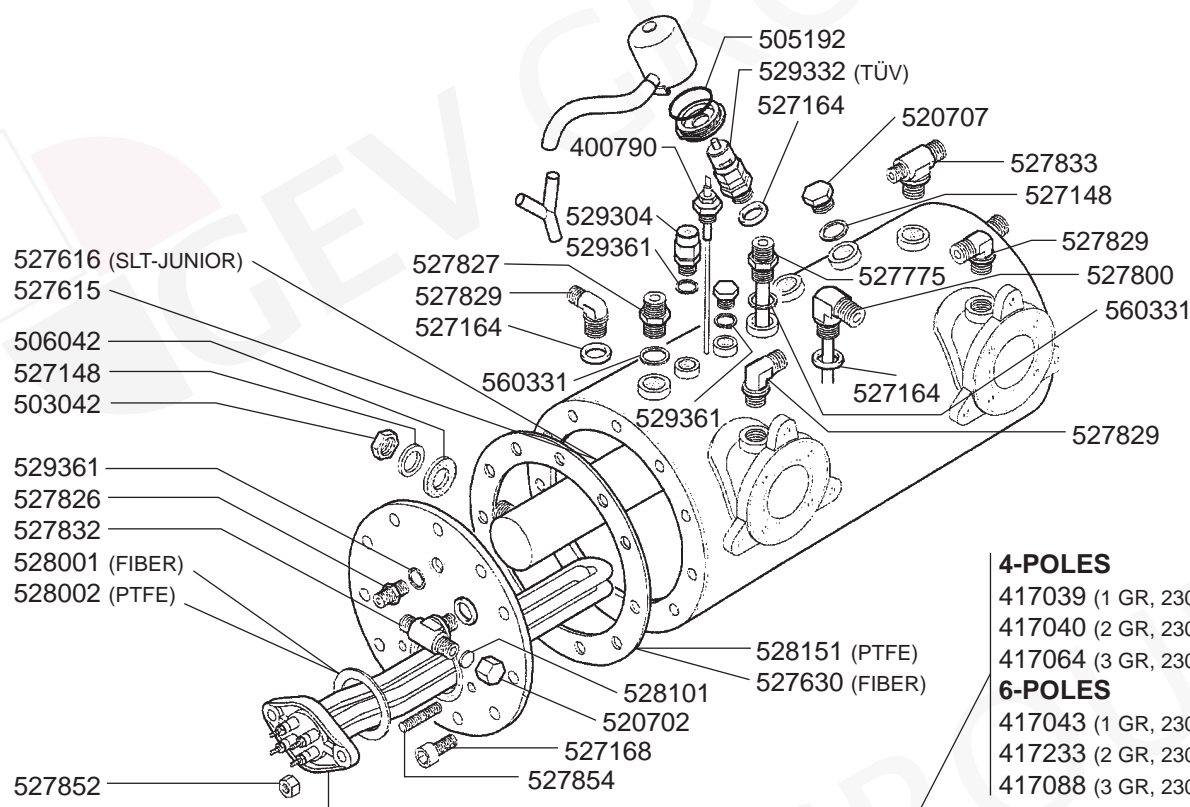


## LEVEL INDICATOR INDICATOR/VALVES/DRIP TRAY





## BOILER CARTUCCIA VARIOUS



## CTS BOILERS VARIOUS

### 4 POLES

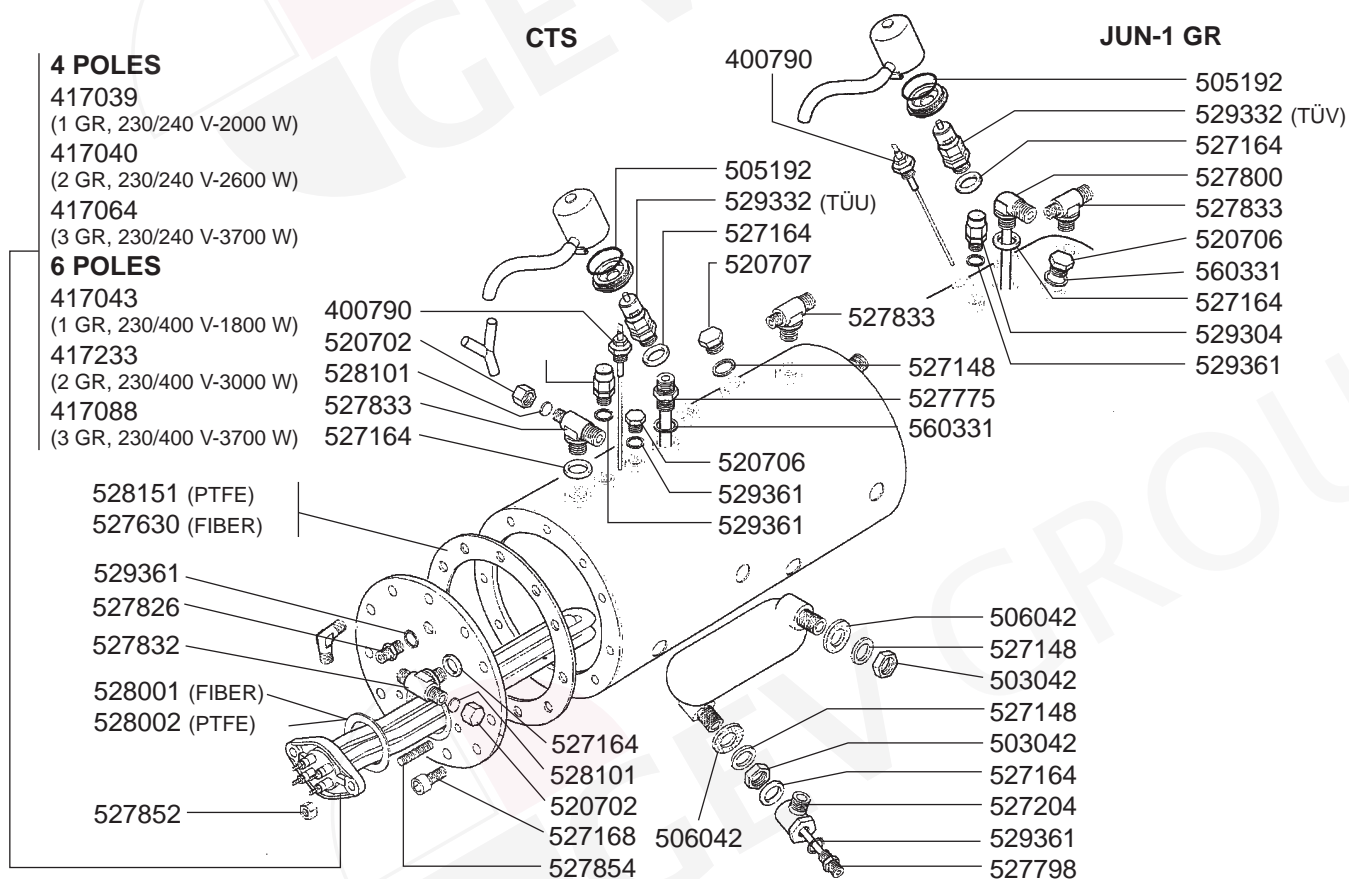
- 417039  
(1 GR, 230/240 V-2000 W)
- 417040  
(2 GR, 230/240 V-2600 W)
- 417064  
(3 GR, 230/240 V-3700 W)

### 6 POLES

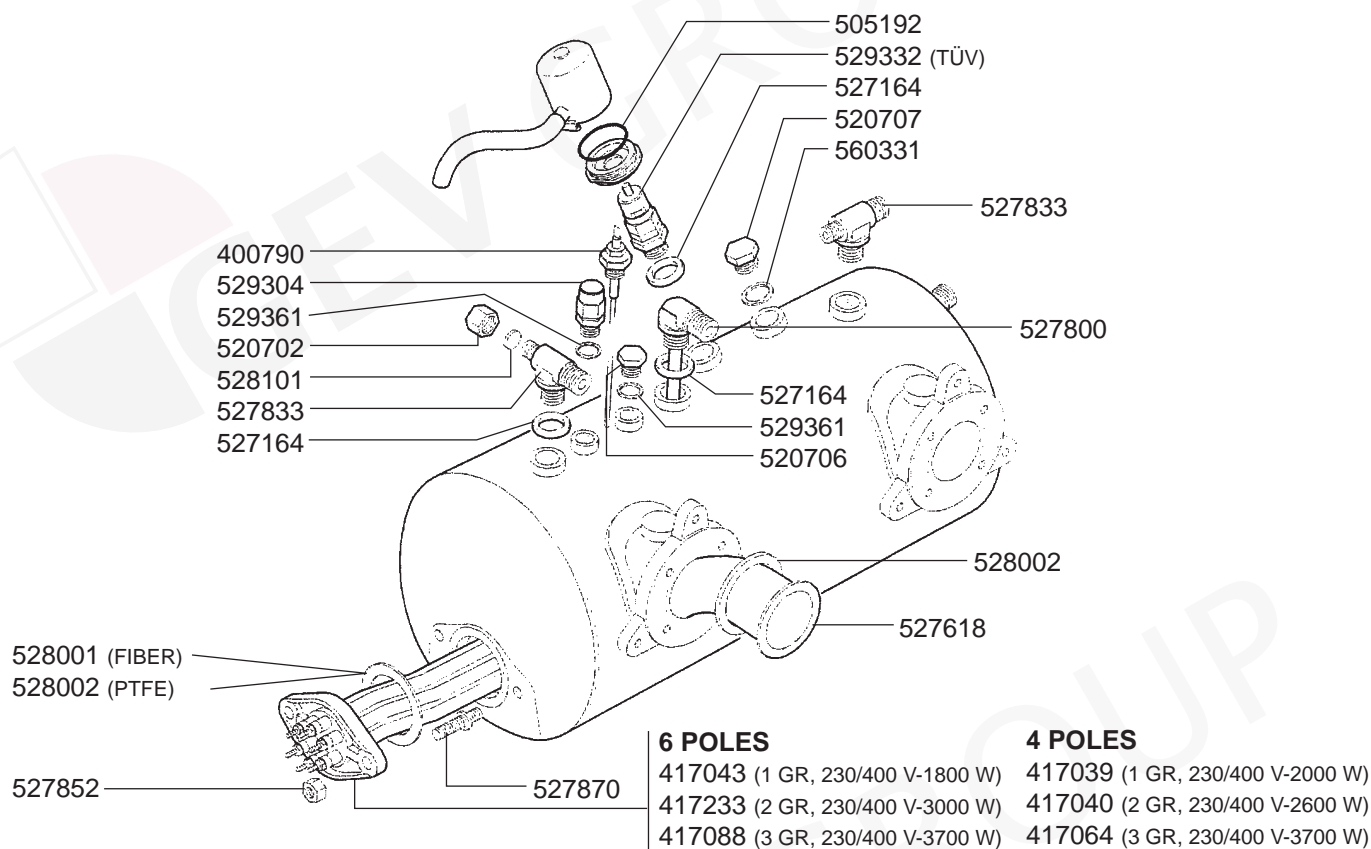
- 417043  
(1 GR, 230/400 V-1800 W)
- 417233  
(2 GR, 230/400 V-3000 W)
- 417088  
(3 GR, 230/400 V-3700 W)

### CTS

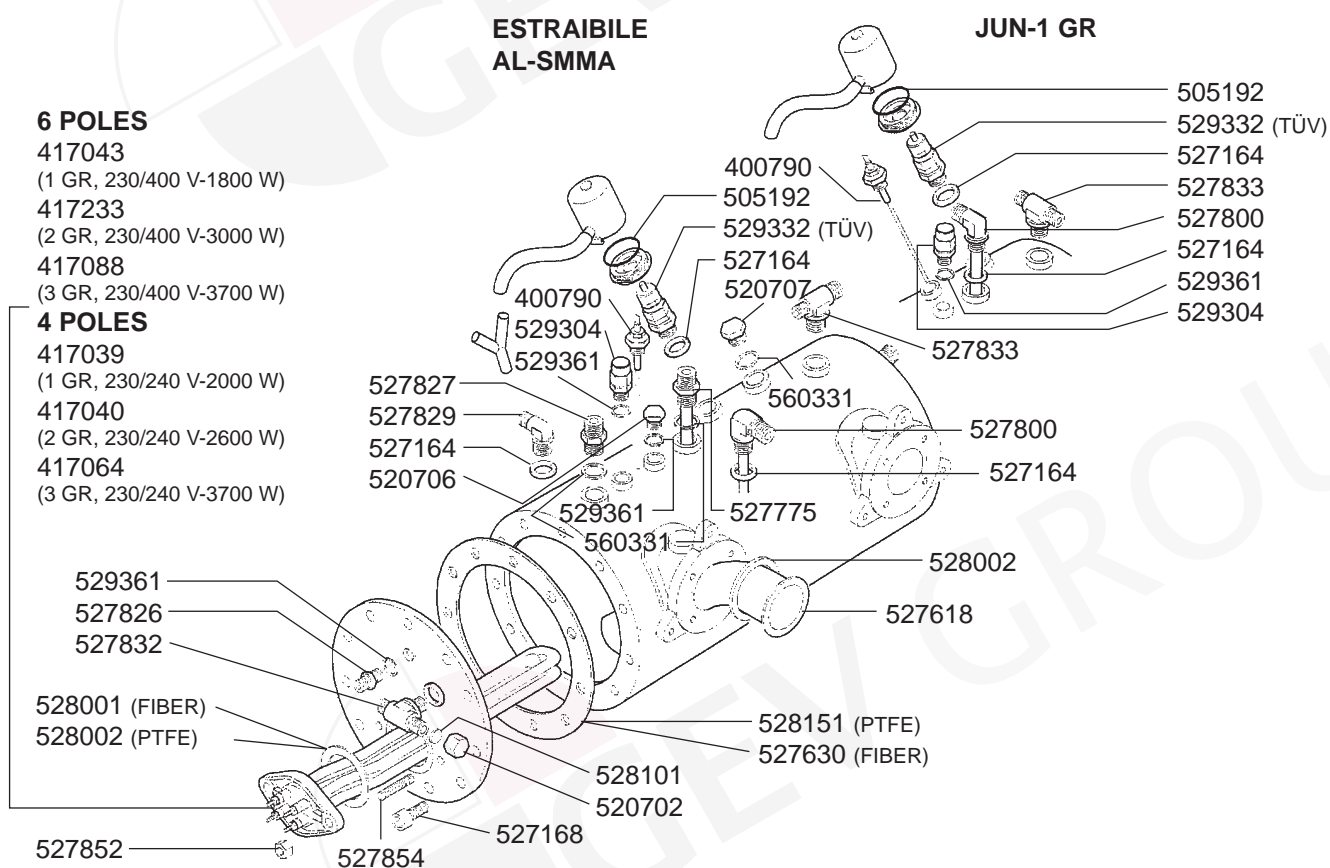
### JUN-1 GR



## BOILER ECO VARIOUS



## BOILER ESTRAIBILE/AL-SMMA VARIOUS

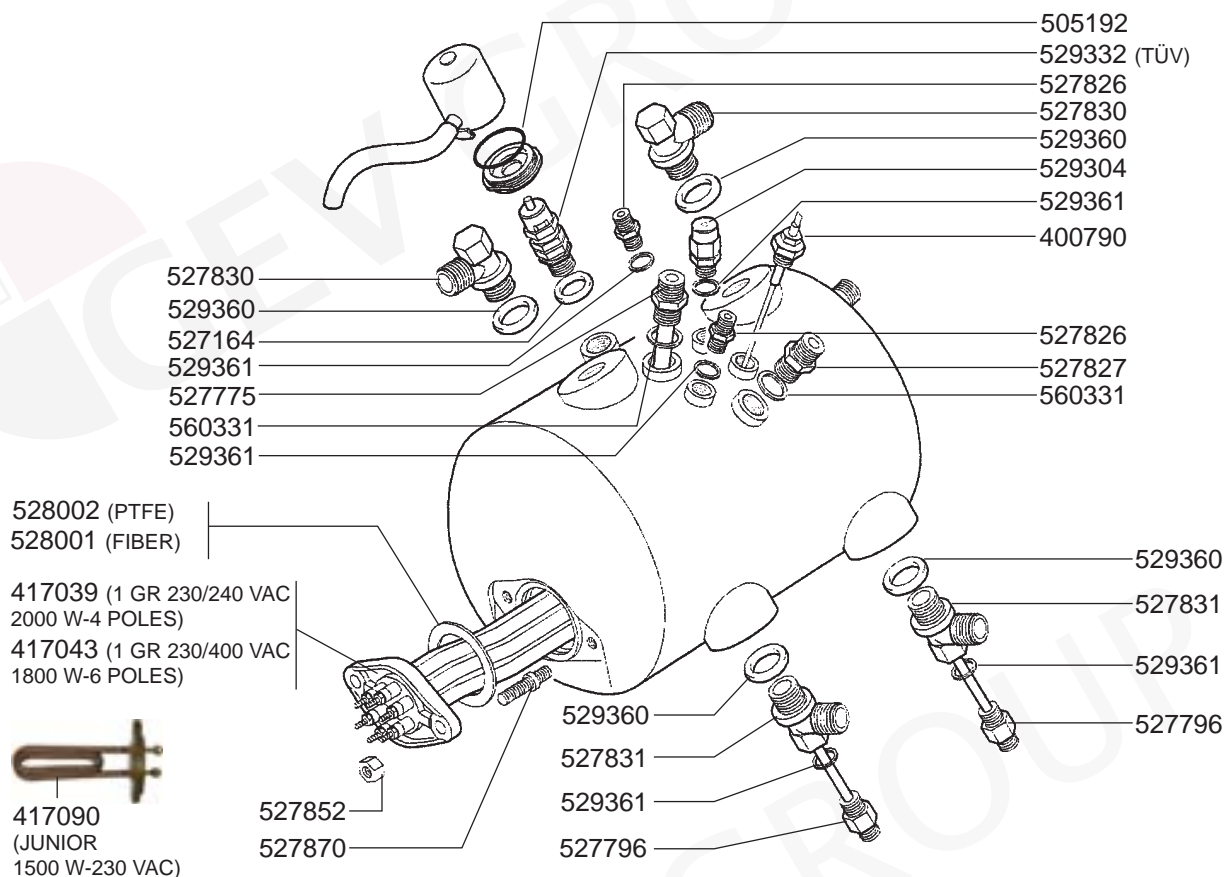




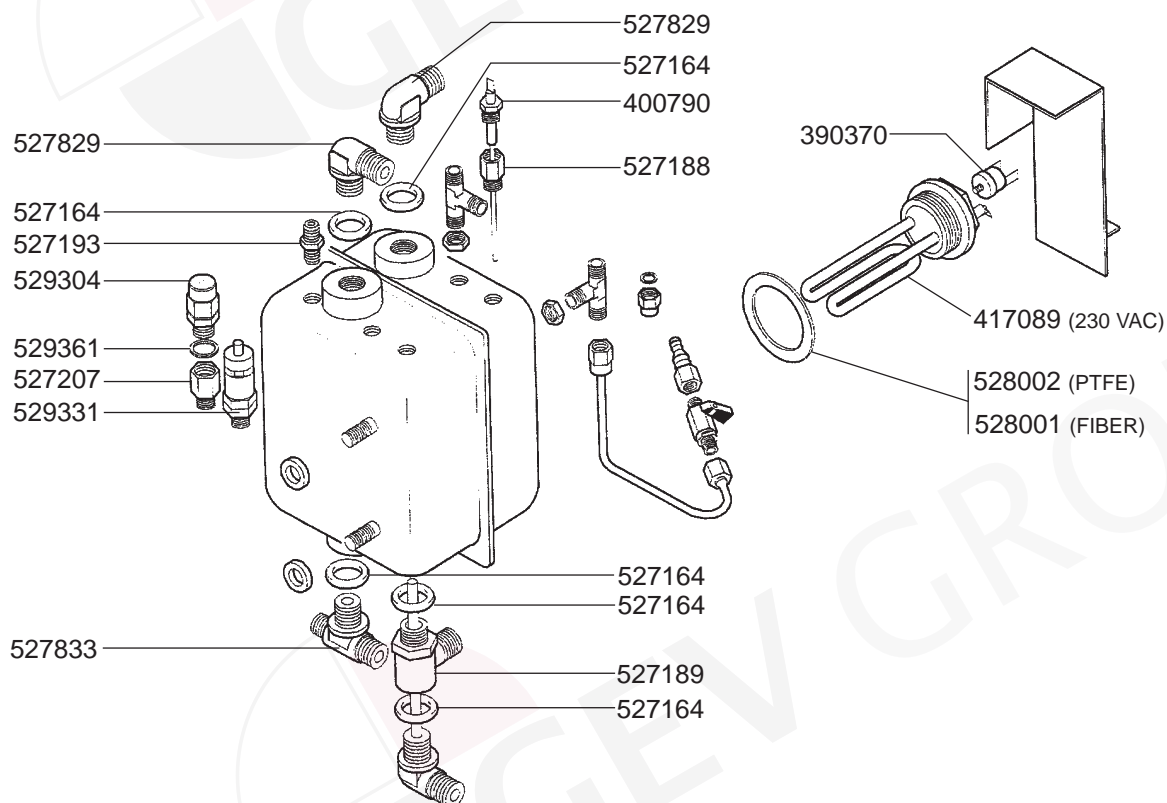
ESPRESSO MACHINES



## BOILER COMPATTA VARIOUS



## BOILER COMPACT VARIOUS



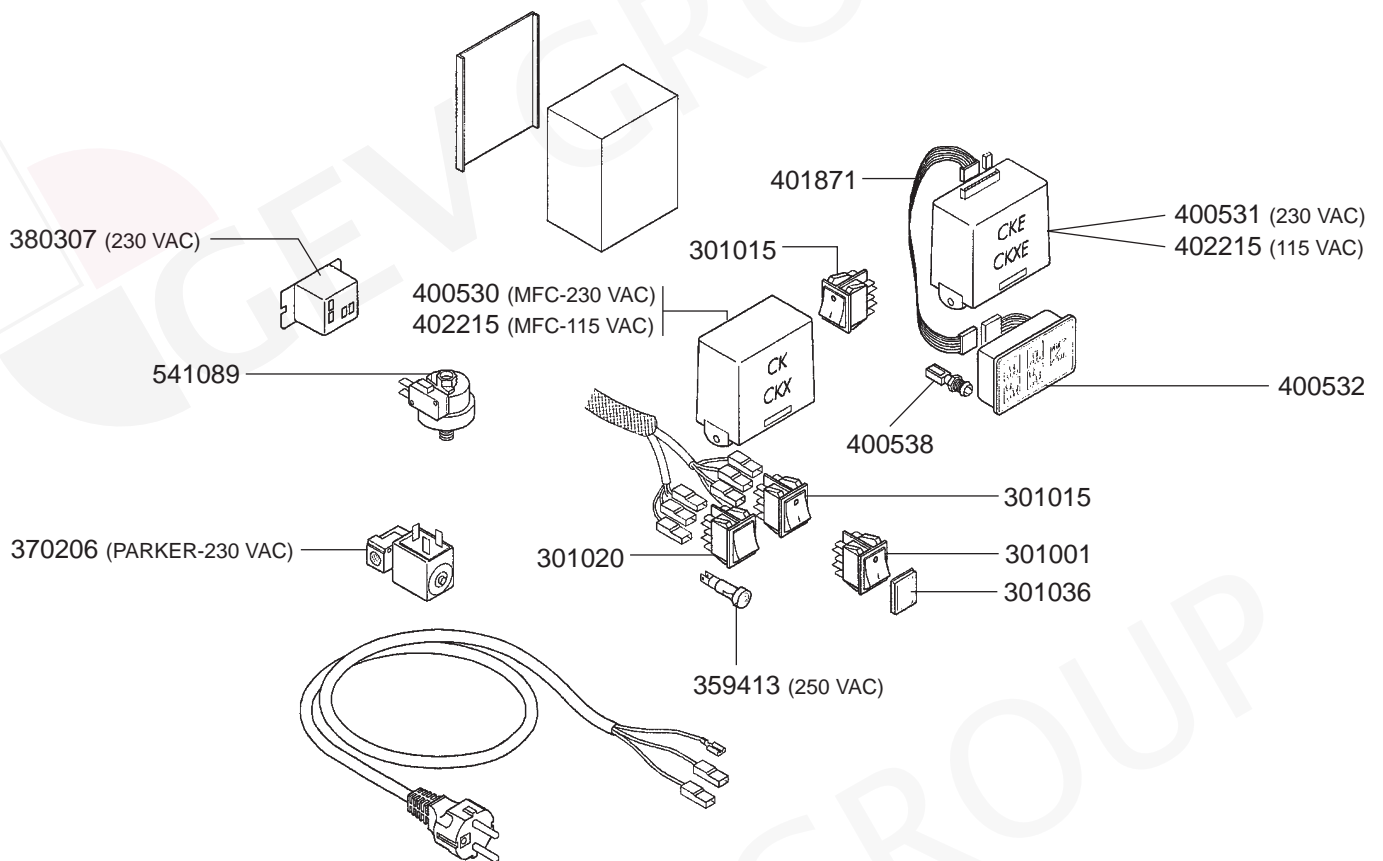


## ESPRESSO MACHINES

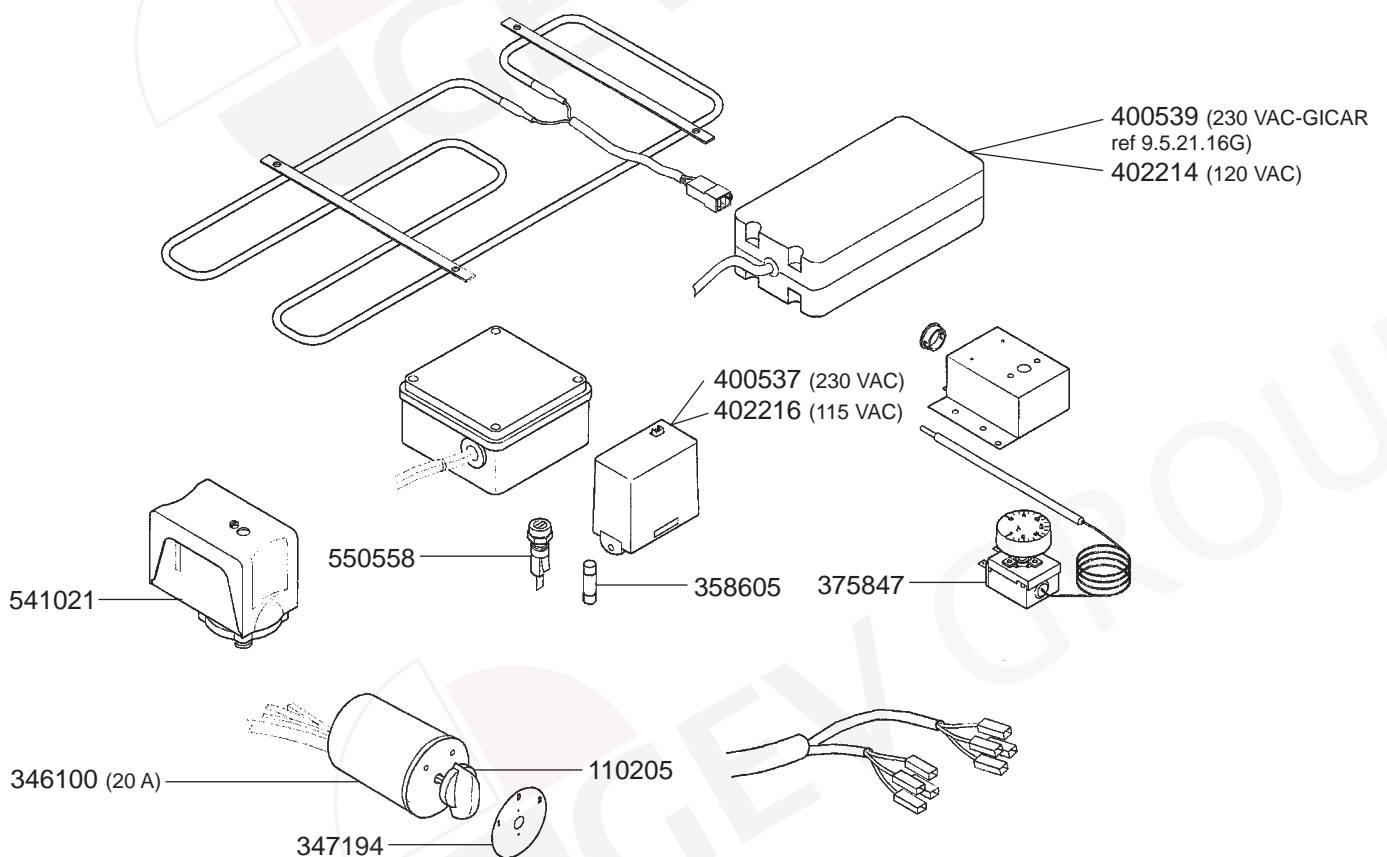




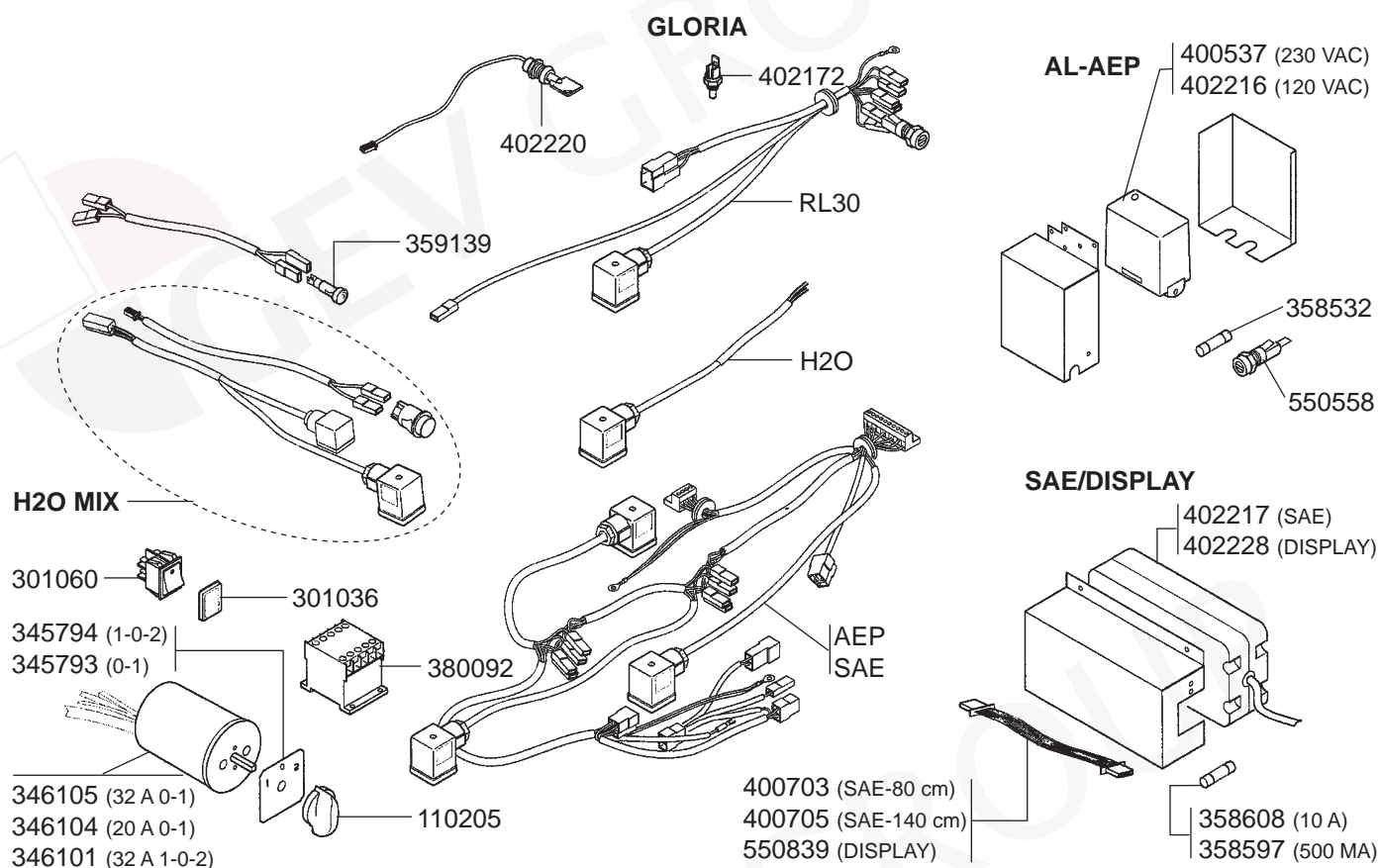
## ELECTRICAL COMPONENTS COMPACT



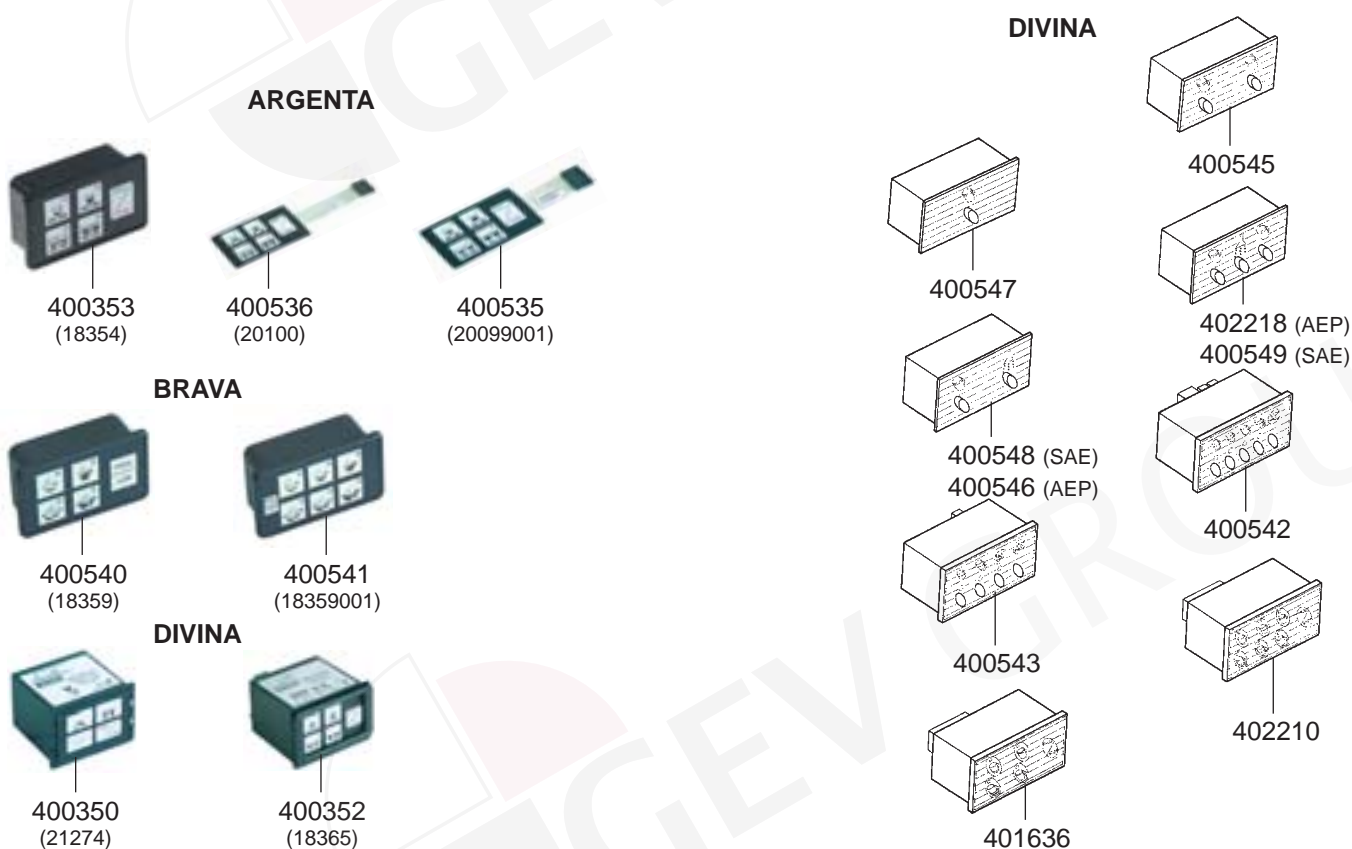
## ELECTRICAL COMPONENTS SIBILLA



## ELECTRICAL COMPONENTS GLORIA

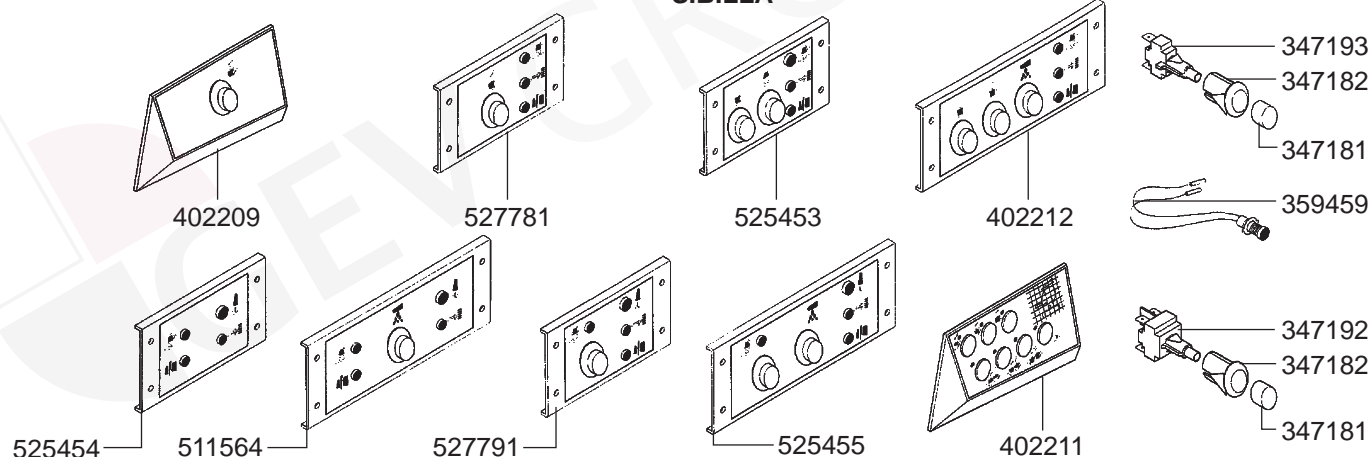


## ELECTRICAL COMPONENTS ARGENTA/DIVINA

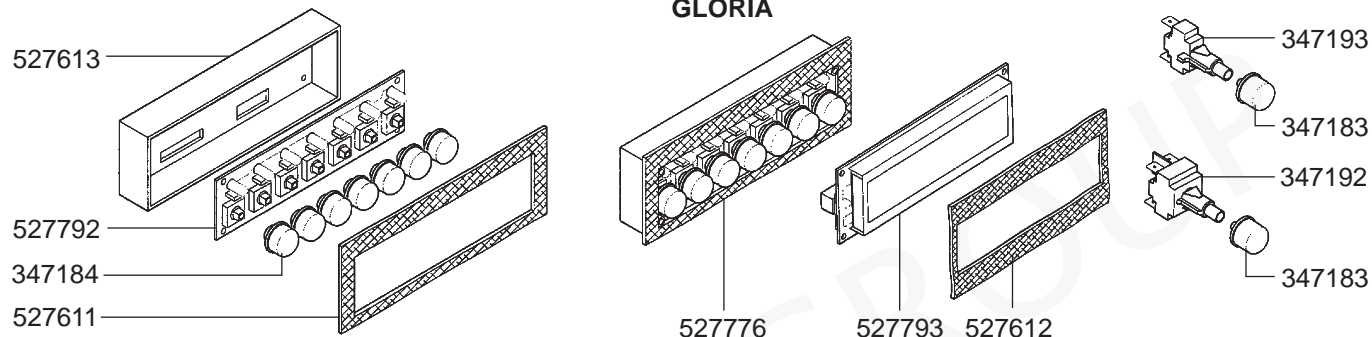


## ELECTRICAL COMPONENTS SIBILLA/GLORIA

### SIBILLA



### GLORIA



## ELECTRICAL COMPONENTS VARIOUS

