



Persons under age 18 are not permitted to operate or
have accessibility to operate this equipment per
U.S. Dept. of Labor Employment Standards
Administration Fact Sheet No. ESA91-3.

univex

WELCOME TO UNIVEX

Thank you for purchasing this Univex product.

Your new Univex BC14 is a commercial countertop appliance designed to volume cut and mix a long and growing list of food. Like all Univex products, this bowl cutter is engineered to provide years of reliable service.

If you have any questions concerning the operation of this unit, or if we can be of further assistance, please call our Customer Service Department.

Univex Customer Service: USA and Canada 603-893-6191
International – 603-893-6191

SAFETY IS OUR TOP PRIORITY

It is a violation of United States Department of Labor regulations to permit operation of the BC14 by any person under the age of 18 years.

Read and make sure that you understand the instructions and safety warning in this booklet before attempting to operate.

Choose a location which provides a level, stable working surface with safe operating clearance around the machine.

NEVER put fingers, hands, or foreign objects under the cover while the bowl cutter is operating, or serious injury could result. Shut off the power, unlock and raise the cover to remove a food jam.

ONLY FOOD IS TO GO THROUGH THE BLADE CUTTING ZONE.

NEVER attempt to clean or service your bowl cutter without first shutting off the power, and then disconnecting the electrical plug from the outlet, or shutting off the circuit breaker at the electrical panel. Be aware that if the electrical supply is disconnected, but the machine switch is left in the on position, the BC-14 will start when the electrical supply is reconnected. To safely power down, switch the machine off and then disconnect the electrical supply.

KNIVES ARE SHARP AND CAN CUT FINGERS. USE CAUTION WHEN HANDLING.

DO NOT operate this bowl cutter without the bowl correctly located in place, and the bowl cover in the fully down and locked position.

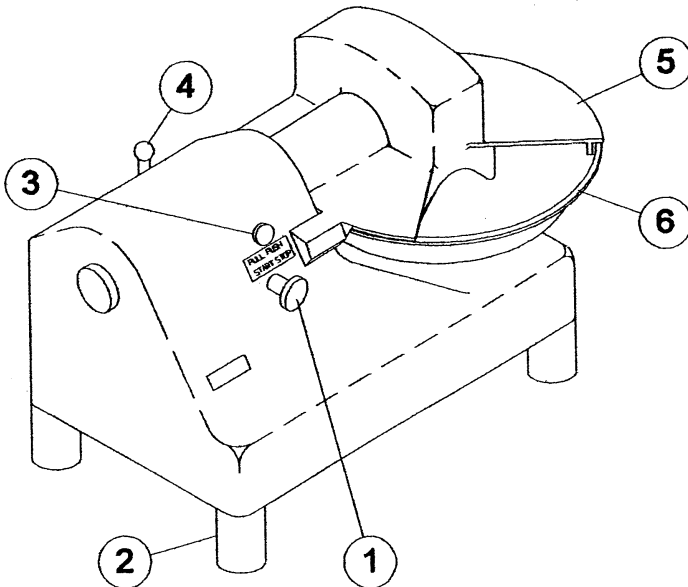
CONTENTS

	Page
Safety	1
Assembly of Bowl Cutter	2
Choosing the right location	3
Operating the Bowl Cutter	
Operating Tips	3
Cleaning	4
Maintenance	4
Illustrations	
Knife shaft and bowl support assembly	5 - 6
Bowl cover/stop-start switch latching assembly	7 - 8
Motor mounting and bowl drive assembly	9 - 10
Bowl cover assembly	11
Electrical component assembly	12
Electrical	13
Warranty Information	Rear Cover

ASSEMBLY OF NEW UNIT:

Caution: Before making electrical connections, check that the specifications on the data plate located on the BC14 agree with those of your electrical service.

The Bowl Cutter (Page 2 , Fig. 1) is shipped fully assembled except for the 2" round legs. The legs are packed separately for safe shipping and will easily thread into the underside of your machine.



- | | |
|--------------------|---------------------|
| 1. ON/OFF Switch | 4. Bowl Cover Latch |
| 2. Legs | 5. Bowl Cover |
| 3. Indicator Light | 6. Bowl |

FIGURE 1 BOWL CUTTER

CHOOSING THE RIGHT LOCATIONS:

Please make certain this countertop unit is located at a safe and secure position (on a stable, level surface) with easy access to the power supply. It is also desirable to have a prep sink close by for easy cleaning.

OPERATING THE BOWL CUTTER:

Clean the BC 14 bowl cutter before using, carefully following the cleaning instructions on page 4.

Operating Tips:

1. All product should be clean and prepared for cutting beforehand.
2. Product should be cut small enough to fit into the opening between the bowl cover and the bowl.
3. For coarse cut, allow product to pass by the blades only once.
4. For finer cut, allow product to pass by the blades until desired cut is obtained.

Your stainless bowl (Fig. 1 Item 6) twist locks into place over our Univex safety sensor (Fig. 2, Item 34). The safety sensor is to assure that the machine will not operate without the bowl correctly located in place.

Locate the bowl cover latch (Fig. 1, Item 4) at the rear of the unit. This safety latch is to assure that the bowl cover is in the full down and locked position before the BC14 will function. Rotate the latch clockwise (as viewed from the rear of the machine), a full turn, until it can rotate no longer to lock the cover in place.

If either of these special safety features appear to be malfunctioning, **STOP** and call for assistance.

The bowl cover conceals the BC14 blades and is designed to insure that **food only** can go through the cutting zone while the machine is in operation. **Do not attempt** either with **hands** or a **foreign object** to reach under this cover. Should an item be too large and jam, shut off the machine, unlock and raise the cover to remove this item.

In addition, there is a red indicator light (Fig. 1, Item 3) above the START/STOP switch which when lit indicates the machine is running.

Your BC14 has a manual reset circuit breaker at the rear of the machine for safety. Should it be tripped, push the STOP switch button, and disconnect the machine from its power source to determine the problem. Once corrected, hook the unit back up and reset the breaker by pushing the red button next to the power cord.

CLEANING:

1. Before **initial** cleaning and **each** cleaning thereafter, make certain your BC14 is not connected to the power source, and the switch is in the STOP position.
2. Rotate the bowl cover locking knob a full turn to the UNLOCK position which will allow the bowl cover to be raised to an OPEN position. This cover can be removed by pulling it away from the motor housing.
3. Slowly turn the knife shaft to:
 - a confirm it moves freely
 - b make certain there is clearance between the knives and the bowl
 - c locate the rear blade slightly above bowl lip for removal.
4. Unscrew the knife shaft knob (Fig. 2 Item 24).
5. Carefully remove knife assembly.
6. Carefully twist the bowl to the left (or unlocked position) and lift off.
7. Remove comb and bread crumb deflector (Fig. 5, Items 5 & 8) from bowl cover.
8. These items should be hand washed, rinsed and sanitized initially, before and after each operation. Do not rinse with a hose. Do not use abrasive pads.
9. After the pieces have dried, safely set the bowl back over safety sensor. Twist the bowl to the right locking it back into place.
10. Carefully reposition the knife assembly into the notch and secure with the knife shaft knob (Fig. 2, Item 24). Confirm it's proper position by manually turning the shaft (Fig. 2, Item 14) to make certain there is proper clearance in full rotation.
11. Insert the comb and bread crumb deflector (Fig. 5, Items 5 & 8) into the bowl cover. Lubricate the shaft (Fig. 5, Item 13) with food grade Petrogel. Slide the bowl cover back into place. Confirm that by rotating the bowl locking knob back into the locked position, the cover (Fig. 5, Item 1) cannot be raised.

You are now ready to connect your Bowl Cutter to the power source and enjoy many years of trouble free, labor saving performance!

MAINTENANCE:**KNIVES**

Eventual wear will cause your knife blades (Fig. 2, Items 20 & 22) to become dull. Sharpening can be done, but only by an experienced professional.

Knife replacement blades are available **only** as a set. Blade sets are precision matched and should be initially installed by a professional service agent.

LUBRICATION

Lubricate the bowl cover shaft (Fig. 5, Item 13) with Petrogel everytime you slide it into place.

BELTS:

The BC14 drive is controlled by the use of:

- a Bowl drive belt, (Fig. 4, Item 19)
- a. Cutter drive belt, (Fig. 2, Item 8).

The advanced technology used in today's belts enables units like your BC14 to give many thousands of hours of trouble-free performance.

If bowl or knife rotation problems should occur, it is most likely a belt problem.

Again, we appreciate your purchase, and trust that our efforts extend to you many years of:

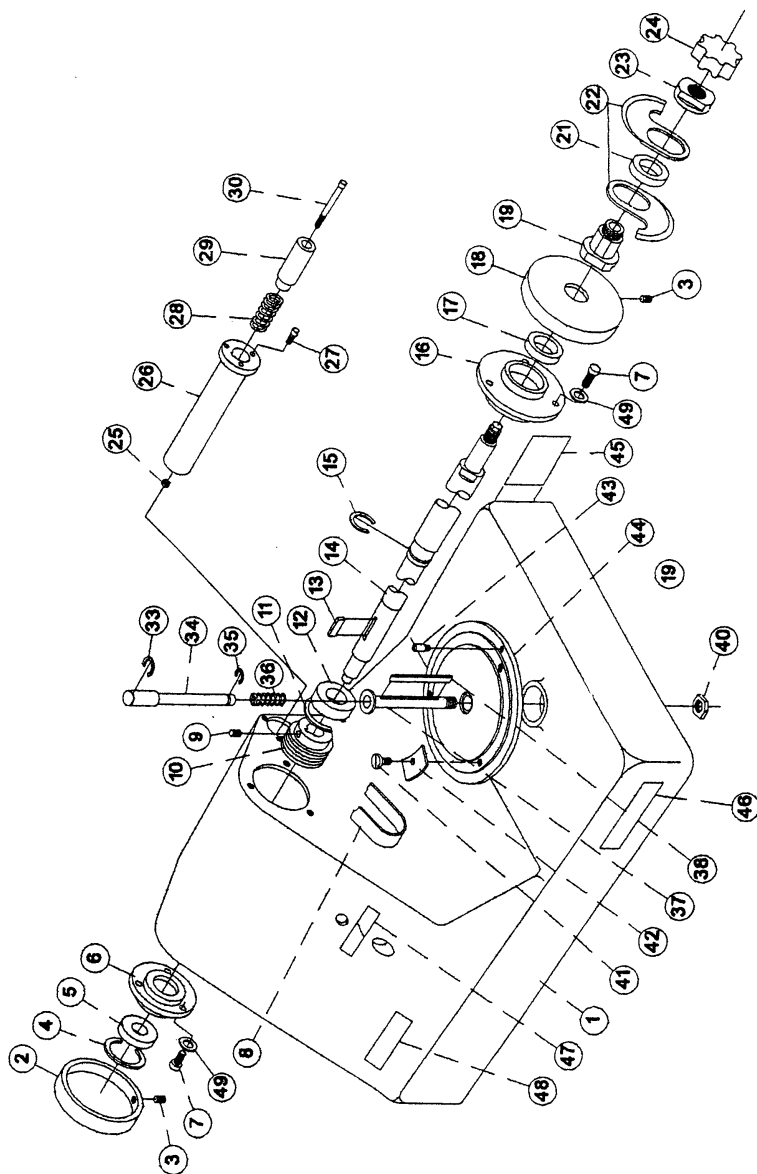
- * labor savings
- * superior product
- * trouble-free performance
- * profitability

The following is a complete Parts List, Wiring and detailed Assembly Diagrams for your BC14.

KNIFE SHAFT & BOWL SUPPORT ASSEMBLIES
FIGURE 2

ILLUS. NO.	PART NO.	DESCRIPTION	QTY.
1	1814001	BASE, CASTING	1
2	1814002	COVER, LEFT SIDE SHAFT SUPPORT	1
3	1814131	SET SCREW M4 - .7 X 12	2
4	1814004	SNAP RING, INTERNAL 10-100-0460	1
5	1030019	BEARING 6204LL	1
6	1814006	SUPPORT, LEFT SIDE	1
7	1204005	SCREW, HEX SOCKET HD M6-1 X 20	6
8	1814008	BELT, BLADE SHAFT	1
9	6509089	SET SCREW M6-1 X 14	1
10	1814010	PULLEY, BLADE SHAFT	1
11	1814011	SNAP RING, INTERNAL 10-100-0570	1
12	1814012	BEARING 62/28LL	1
13	1814013	KEY 6MM SQ. X 25 LG ROUNDED BOTH ENDS	1
14	1814014	SHAFT, BLADE	1
15	1814015	SNAP RING, EXTERNAL 11-100-0280	1
16	1814016	SUPPORT, RIGHT SIDE SHAFT	1
17	8512227	SEAL 30,52,7 SINGLE LIP, NITRILE	1
18	1814018	COVER, RIGHT SIDE SHAFT SUPPORT	1
19	1814019	SUPPORT, BLADE	1
20		RESERVED	1
21	1814021	SPACER	1
22	1814022	BLADE, SET	1
23	1814023	NUT, BLADE SUPPORT	1
24	1814024	KNOB, CUTTER ASSEMBLY	1
25	1814025	NUT, LOCK, HEX M8-1.25	1
26	1814026	SUPPORT, BOWL COVER SHAFT	1
27	1814027	SCREW, HEX SOC HD M5-0.8 X 16	3
28	1814028	SPRING, BOWL COVER SUPPORT	1
29	1814029	BUSHING, BOWL COVER SUPPORT SHAFT	1
30	1814030	SCREW, HEX SOC HD M8-1.25 X 30	1
31		RESERVED	
32		RESERVED	
33	1814033	E-RING, EXTERNAL 11-420-0110	1
34	1814034	ROD, BOWL REMOVAL SAFETY SWITCH	1
35	1814035	E-RING, EXTERNAL 11-42-0050	1
36	1814036	SPRING	1
37	1814037	SHAFT, BOWL GEARBOX	1
38	1814038	KEY 5MM SQ. X 70 LG ROUNDED BOTH ENDS	1
39		RESERVED	
40	1814040	NUT, HEX M20-1.5	1
41	1814041	SCREW, SPECIAL HD M6-1 X 14	3
42	1814042	PLATE, BOWL LOCK	3
43	1814043	PIN, BOWL LOCK	1
44	1814044	SUPPORT, BOWL	1
45	4400308	LABEL, SERIAL NUMBER	1
46	4400409	LABEL, STOP UNPLUG	2
47	4400279	LABEL, START/STOP	1
48	1024010	LABEL, UNIVEX	1
49	6509041	WASHER, FLAT M6	6

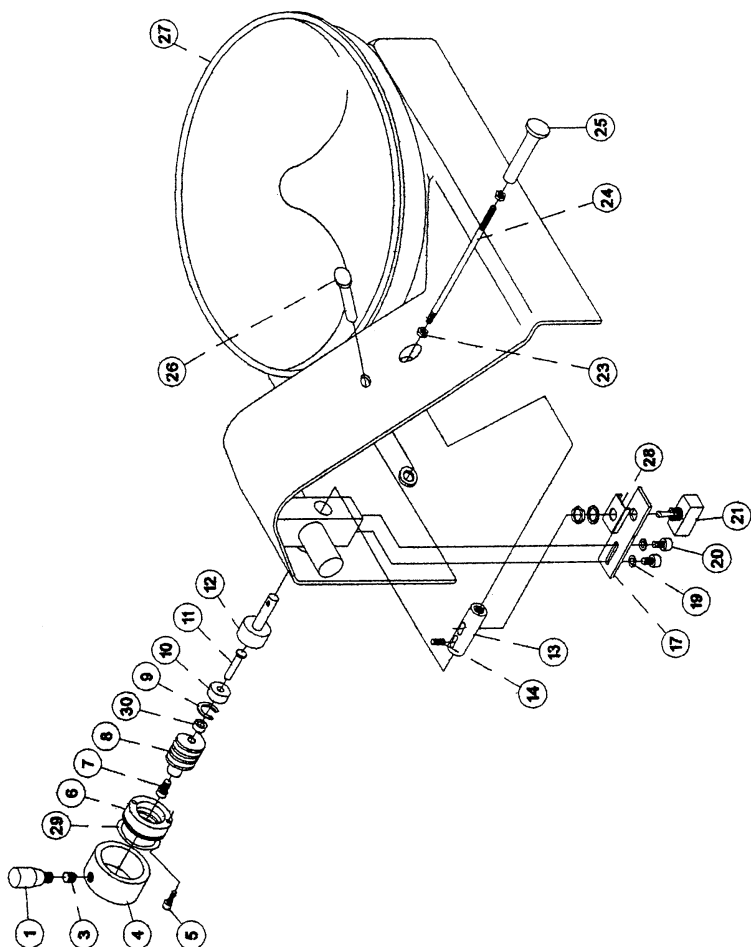
KNIFE SHAFT & BOWL SUPPORT ASSEMBLY FIGURE 2



**BOWL COVER/START-START SWITCH LATCHING ASSEMBLY
FIGURE 3**

ILLUS. NO.	PART NO.	DESCRIPTION	QTY
1	1814846	KNOB, BOWL COVER LOCK	1
2		RESERVED	
3	1814047	SET SCREW, CUP POINT M8-1.25 X 10	1
4	1814049	COVER, BOWL COVER LOCK	1
5	1814132	SCREW, HEX SOC HD M5-0.8 X 20	2
6	1814050	WORM GEAR NUT	1
7	1814007	SCREW, HEX SOC HD M6-1 X 16	1
8	1814051	WORM GEAR	1
9	1814052	SNAP RING INTERNAL 10-100-0210	1
10	6509031	BEARING	1
11	1814054	PIN, BOWL COVER LOCK BEARING	1
12	1814055	SHAFT, BOWL COVER LOCK	1
13	8512612	SHAFT, ROD AND SWITCH	1
14	1814057	SET SCREW M4-0.7 X 10	1
15		RESERVED	
16		RESERVED	
17	1814060	BRACKET, ON/OFF SWITCH	1
18	1814061	BUSHING, ROD AND SWITCH SHAFT	1
19		RESERVED	
20	1814063	SCREW SLOTTED PAN HD M5-0.8 X 10	2
21	7120009	SWITCH, ON/OFF	1
22		RESERVED	
23	6509074	NUT, HEX M6	2
24	1814067	ROD, ON/OFF	1
25	8512615	KNOB, ON/OFF	1
26	1814069	LIGHT, ON/OFF, 120V	1
	1814069A	LIGHT, ON/OFF, 220V	1
27	1814070	BOWL	1
28	1814847	BRACKET, SWITCH MOUNT	1
29	1814131	O-RING	1
30	1814133	SPACER	1

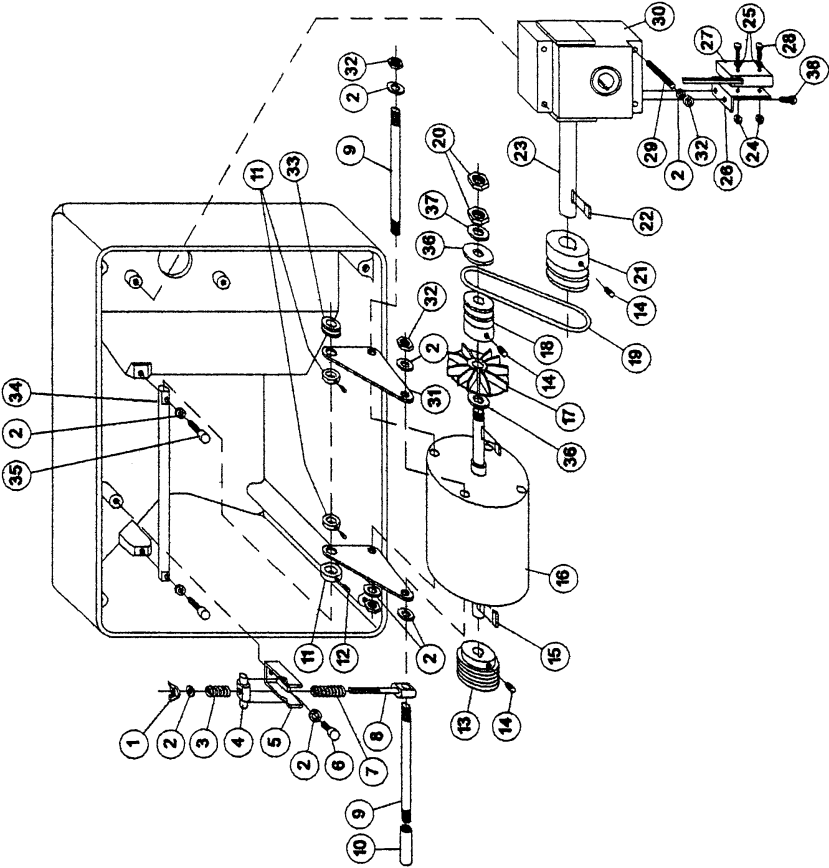
BOWL COVER/START-START SWITCH LATCHING ASSEMBLY
FIGURE 3



MOTOR MOUNTING & BOWL DRIVE ASSEMBLY
FIGURE 4

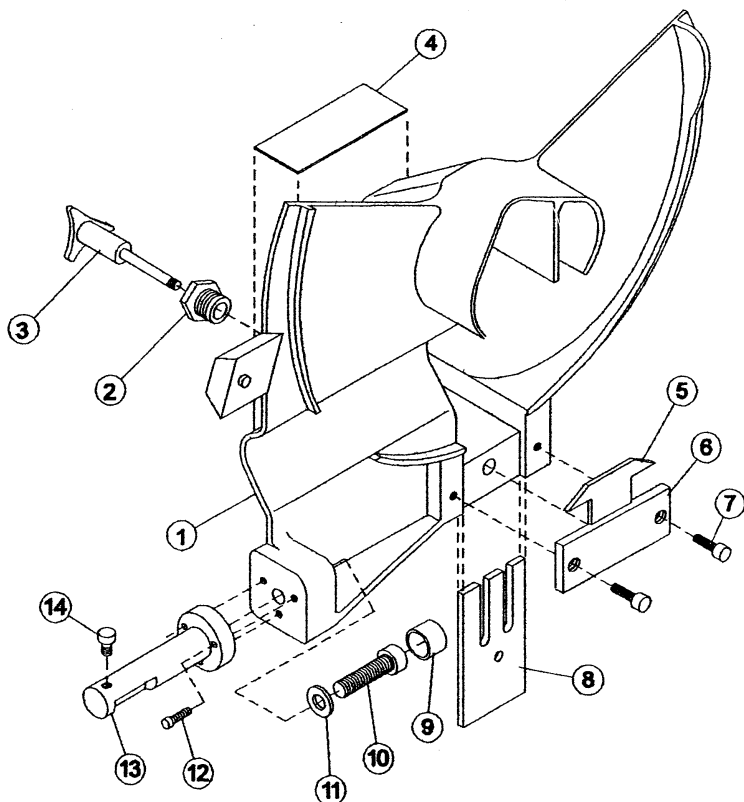
ILLUS NO.	PART NO.	DESCRIPTION	QTY.
1	1814071	NUT, WING M8-1.25	1
2	6509028	WASHER, FLAT M8	12
3	1814073	SPRING	1
4	1814074	BUSHING, PIVOT	1
5	1814075	BRACKET, MOTOR ADJUSTMENT	1
6	1204007	SCREW, HEX SOC HD M8-1.25 X 15	1
7	1814077	SPRING	1
8	1814078	BOLT, MOTOR ADJUSTMENT	1
9	1814079	ROD, MOTOR MOUNTING	2
10	1814080	BUSHING, MOTOR ADJUSTMENT	3
11	1814081	SPACER, MOTOR MOUNT	3
12	8512827	SET SCREW M5-.8 X 5	1
13	1814083	PULLEY, BLADE SHAFT MOTOR	1
14	6509098	SET SCREW M6-1 X 6	3
15	1814084	KEY, 4MM SQ. X 20 LG ROUNDED BOTH ENDS	2
16	1814844	MOTOR, 115V, 60HZ, 1PH, 1/2 HP	1
	8512844A	MOTOR, 220-240V, 50/60HZ, 1PH, 1/2HP	1
17	1814086	FAN	1
18	1814087	PULLEY, GEARBOX MOTOR	1
19	1814088	BELT, GEARBOX DRIVE	1
20	1814089	NUT M12-1.75	2
21	1814090	PULLEY, GEARBOX	1
22	1814091	KEY 5MM SQ. X 20 LG, ROUNDED BOTH ENDS	2
23	1814092	SHAFT, GEARBOX	1
24	8512622	NUT, HEX M4-.7	2
25	1814133	WASHER, M4	2
26	1814095	BRACKET, BOWL SWITCH	1
27	1814096	SWITCH, BOWL	1
28	1814097	SCREW, PAN SLOTTED HD M4-.7 X 25	2
29	1814848	THREAD ROD, M8-1.25 X 62	4
30	1814099	GEARBOX	1
31	1814100	BRACKET, MOTOR MOUNTING	2
32	4400410	NUT, HEX M8-1.25	7
33	1814102	GROMMET	2
34	1814103	ROD, MOTOR MOUNTING BRACKET	1
35	1814104	SCREW, HEX SOC. HD M8-1.25 X 30	2
36	1814849	WASHER	3
37	1814128	WASHER, FLAT M12	1
38	1814134	SCREW, PAN SLOTTED HD M5-.8 X 10	2

MOTOR MOUNTING & BOWL DRIVE ASSEMBLY
FIGURE 4



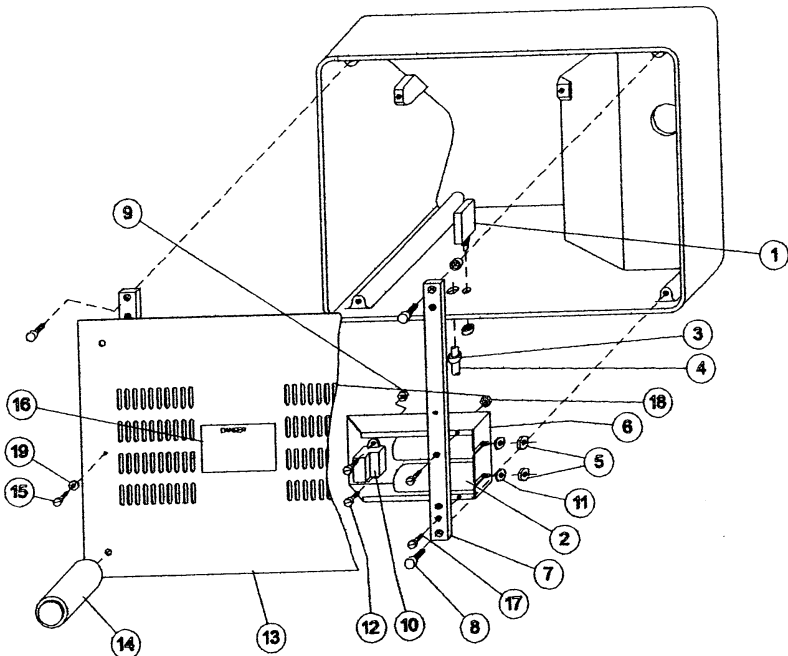
BOWL COVER ASSEMBLY
FIGURE 5

ILLUS. NO.	PART NO.	DESCRIPTION	QTY.
	1814898	BOWL COVER ASSEMBLY INCLUDES ITEMS 2 - 14	
1	1814120	COVER, BOWL	1
2	1814123	NUT, SPECIAL	1
3	7510150	KNOB, ASSEMBLY	1
4	4400409	LABEL	1
5	1814231	DEFLECTOR, COMB	1
6	1814125	PLATE, COMB	1
7	1814007	SCREW HEX SOC HD M6-1 X 12	2
8	1814126	COMB	1
9	1814850	COVER, SCREW HEAD	1
10	1814135	SCREW HEX SOC HD M12-1.75 X 45	1
11	1814128	WASHER, FLAT M12	1
12	1814027	SCREW, HEX SOC HD M5-0.8 X 16	3
13	1814129	SUPPORT, BOWL COVER	1
14	1814130	SCREW, HEX SOC HD M5-0.8 X 8	1

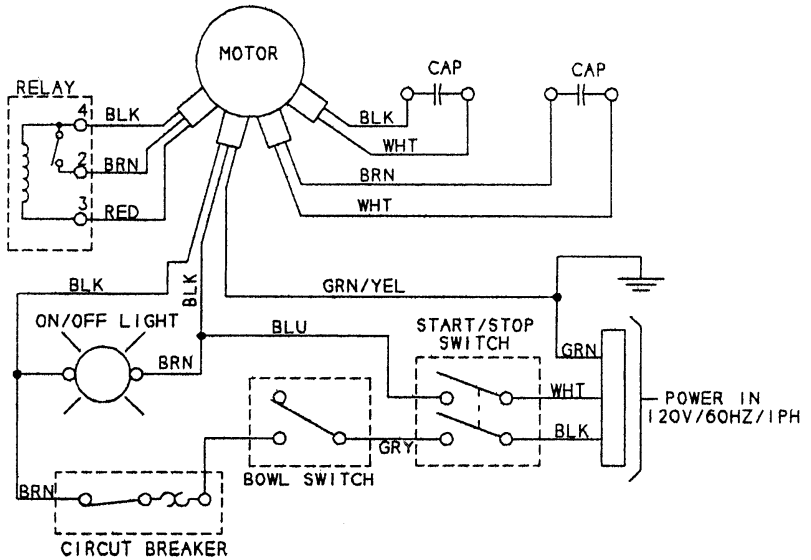


ELECTRICAL COMPONENT ASSEMBLY FIGURE 6

ILLUS NO.	PART NO.	DESCRIPTION	QTY.
1	1814195	CIRCUIT BREAKER 120V	1
	4400240	CIRCUIT BREAKER 220-240V	1
2	8512616	CAPACITOR 120V	2
	8512618	CAPACITOR 220-240V	1
3	1814107	STRAIN RELIEF	1
4	1814108	CORD	1
5	4400410	NUT, HEX M8	2
6	1814110	HOLDER, CAPACITOR	1
7	1814111	SUPPORT, FEET	2
8	1204005	SCREW, HEX SOC. HD M6-1.0 X 20	6
9	1814113	NUT, HEX M4	2
10	8512620	RELAY	1
11	6509028	WASHER, M8 FLAT	2
12	1814116	SCREW, SLOTTED PAN HD M4-.7 X 10	2
13	1814117	COVER, BOTTOM	1
14	1814118	FEET	4
15	1814119	SCREW, M6-1.0 X 16	2
16	4400409	LABEL, DANGER	1
17		RESERVED	
18	6509074	NUT, HEX M6	2
19	6509041	WASHER, M6	2
20	4400053	POWER CORD 120V (NOT SHOWN)	1
	4400053A	POWER CORD 220-240V (NOT SHOWN)	1



ELECTRICAL SCHEMATIC
120V, 60HZ, 1PH
FIGURE 7



ELECTRICAL SCHEMATIC
220-240V, 50/60HZ, 1PH
FIGURE 8

