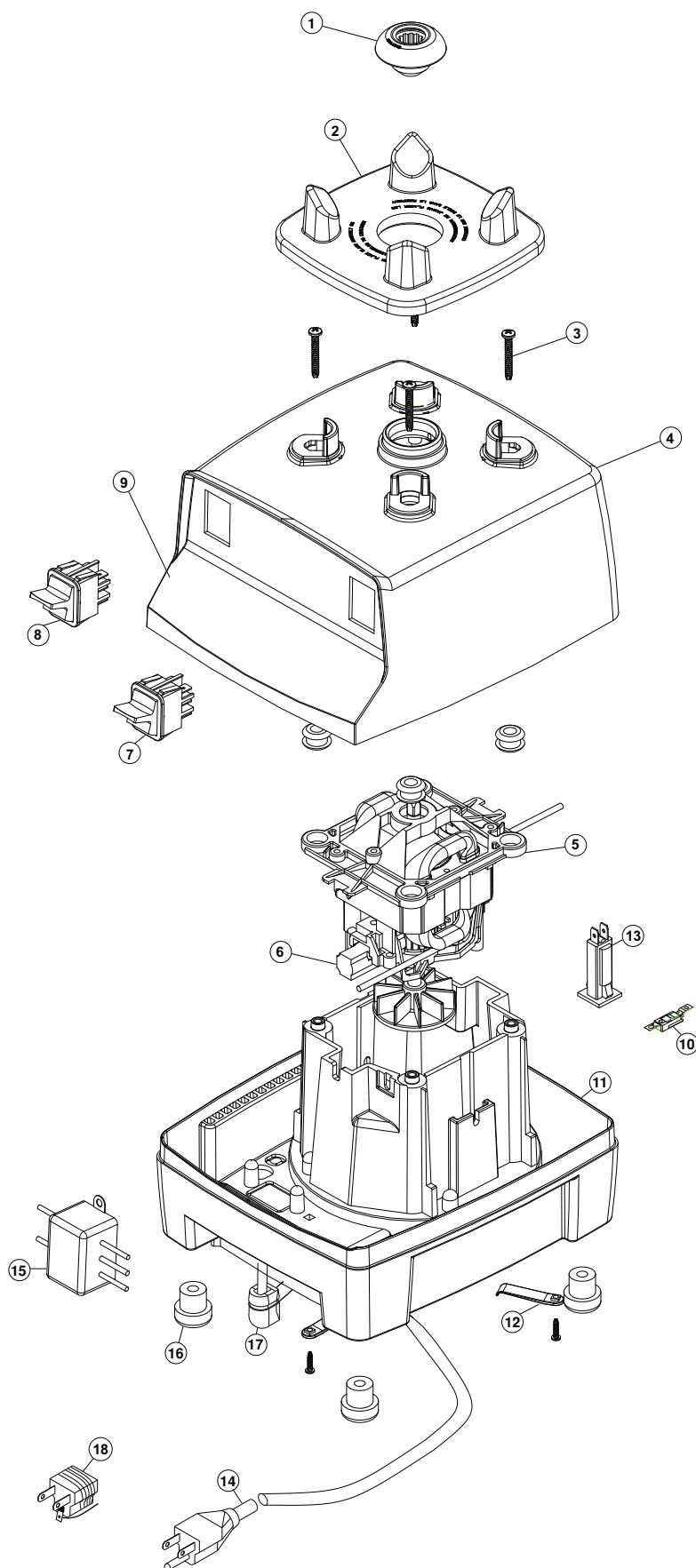


# Drink Machine Two-Speed



# **Drink Machine Two-Speed Parts List – 100V (Japan), 120V, 120V (Taiwan), 120V EMC (Taiwan), 220/240V**

NO.	NEW PART NO.	OLD PART NO.	DESCRIPTION	VOLTAGE	QTY./ PACK
1	891	891	Drive Socket Assembly	All	1
1	15546	15546	Drive Socket Assembly (Set of 2)	All	2
1	15547	15547	Drive Socket Assembly (Set of 5)	All	5
2	791	791	Centering Pad	All	1
3	15726	FST102	Upper Shell Retainer Screws (4)	All	4
4	15757	PLS107	Upper Base Shell - Grey	All	1
5	15675	ASY144	Motor Assembly *	220/240V	1
5	15673	ASY153	Motor Assembly	220/240V	1
5	15669	ASY132	Motor Assembly	100/120/120V EMC	1
6	764	764	Brush Replacement Kit	All	2
7	15758	CTL104	On/Off Switch	All	1
8	15770	ASY102	High/Low Switch	All	1
9	LBL101	LBL101	Two-Speed Label	All	1
10	824	824	Thermal Protector Kit	100/120/120V EMC	1
NOT SHOWN	15515	15515	Thermal Switch Assembly Kit*	220/240V	1
11	15760	ASY101	Base Frame Assembly	All	1
12	793	793	Cord Retainer Clip & Screw	All	4
NOT SHOWN	15759	CTL109	Power Resistor*	220/240V	1
NOT SHOWN	15761	CTL112	Circuit Breaker*	220/240V	1
13	15735	CTL151	Circuit Breaker	220/240V	1
14	By Country	By Country	Power Cord	220/240V	1
14	15756	WIR100	Power Cord	120V	1
14	15737	PLG117	Power Cord	100V	1
14	15738	PLG133	Power Cord	120V EMC	1
15	15739	CTL509	EMI Filter	220/240V	1
15	15740	CTL131	EMI Filter	100V	1
15	15741	CTL515	EMI Filter	120V EMC	1
16	794	794	Rubber Feet (4)	All	4
17	15742	FST815	Power Cord Strain Relief	220/240V	1
17	15743	CON800	Power Cord Strain Relief	100/120/120V EMC	1
18	15745	CTL125	Japanese Adapter	100V	1
NOT SHOWN	15748	n/a	Base Frame Channel (3)	All	3

\*Machines before Serial No. 000768A059210356