



GLO-RAY[®]

Carving Station

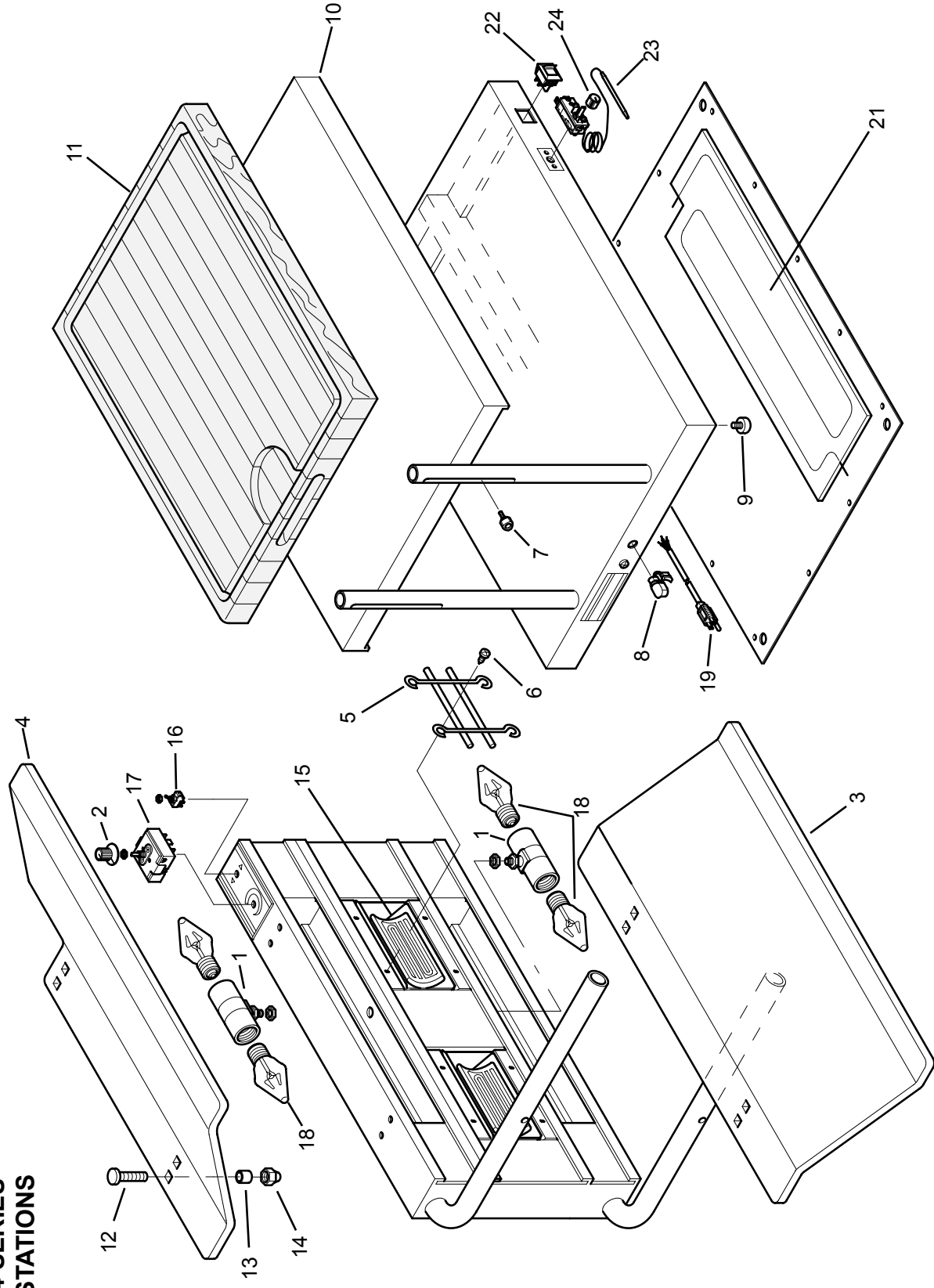
GRCSL Series

GRCSL-24

GRCSLH-24

**REPLACEMENT
PARTS LIST**

HATCO GLO-RAY GRCSCL-24 SERIES CARVING STATIONS



PARTS COMMON TO ALL GRCSCL-24 & GRCSCLH-24

ITEM	DESCRIPTION	PART NO.	QTY.	ITEM	DESCRIPTION	PART NO.	QTY.
1.	Light Socket	02.30.047.00	2	8.	Cord Grip	02.20.212.00	1
2.	Knob, Infinite Heat Control	05.30.043.00	1	9.	Rubber Foot	05.30.044.00	4
3.	R.H. Breath Protector	R04.25.260.00	1	10.	Stainless Steel Drip Pan (opt.)	04.25.265.00	1
4.	L.H. Breath Protector Kit (opt.)	R04.25.263.00	1	11.	NSF. Approved Cutting Board (opt.)	04.25.267.00	1
5.	Element Wire Guard	04.08.121.00	2	12.	Screw	05.04.380.00	4-8
6.	Screws for Wire Guard	05.04.013.00	8	13.	Spacer	04.25.264.00	4-8
7.	Knob-Post Assembly	R05.30.048.00	2	14.	Nut	05.04.038.00	4-8

PARTS SPECIFIC TO MODEL GRCSCL-24

ITEM	DESCRIPTION	120V				208V				230-240V			
		200V				220V				240V			
15.	Heating Element, Ceramic (Qty. 2)	02.07.006.00	---	---	---	02.07.017.00	02.07.013.00	02.07.017.00	02.07.013.00	02.07.017.00	02.07.013.00	02.07.013.00	02.07.013.00
16.	On/Off Toggle Switch	02.19.016.00	---	---	---	02.19.008A.00	02.19.008A.00	02.19.008A.00	02.19.008A.00	02.19.008A.00	02.19.008A.00	02.19.008A.00	02.19.008A.00
17.	Top Infinite Heat Control	R02.19.018.00	---	---	---	R02.19.019.00	R02.19.019.00	R02.19.019.00	R02.19.019.00	R02.19.019.00	R02.19.019.00	R02.19.019.00	R02.19.019.00
18.	Light Bulb, 60 Watt (Qty. 4)	02.30.043.00	---	---	---	02.30.058.00	02.30.058.00	02.30.058.00	02.30.058.00	02.30.058.00	02.30.058.00	02.30.058.00	02.30.058.00
19.	Power Cord	R02.18.030.00	---	---	---	02.18.077.00	02.18.066.00	02.18.077.00	02.18.066.00	02.18.077.00	02.18.066.00	02.18.066.00	02.18.066.00
20.	Terminal Block, 3-Pole (not shown)	---	---	---	---	---	---	---	---	---	---	---	---
	Electrical Drawing	HS1-3777	---	---	---	HS1-3837	HS1-3838	HS1-4218	HS1-4219	HS1-4218	HS1-4219	HS1-4218	HS1-4219

PARTS SPECIFIC TO MODEL GRCSCLH-24

ITEM	DESCRIPTION	120V				208V				230-240V			
		200V				220V				240V			
15.	Heating Element, Ceramic (Qty. 2)	02.07.006.00	---	---	---	02.07.017.00	02.07.013.00	02.07.017.00	02.07.013.00	02.07.017.00	02.07.013.00	02.07.013.00	02.07.013.00
16.	On/Off Toggle Switch	02.19.016.00	---	---	---	02.19.008A.00	02.19.008A.00	02.19.008A.00	02.19.008A.00	02.19.008A.00	02.19.008A.00	02.19.008A.00	02.19.008A.00
17.	Top Infinite Heat Control	R02.19.018.00	---	---	---	R02.19.019.00	R02.19.019.00	R02.19.019.00	R02.19.019.00	R02.19.019.00	R02.19.019.00	R02.19.019.00	R02.19.019.00
18.	Light Bulb, 60 Watt (Qty. 4)	02.30.043.00	---	---	---	02.30.058.00	02.30.058.00	02.30.058.00	02.30.058.00	02.30.058.00	02.30.058.00	02.30.058.00	02.30.058.00
19.	Power Cord	R02.18.030.00	---	---	---	02.18.077.00	02.18.066.00	02.18.077.00	02.18.066.00	02.18.077.00	02.18.066.00	02.18.066.00	02.18.066.00
20.	Terminal Block, 3-Pole (not shown)	---	---	---	---	---	---	---	---	---	---	---	---
21.	Base Heating Element (Qty. 2)	02.05.260.00	---	---	---	02.05.301.00	02.05.301.00	02.05.301.00	02.05.301.00	02.05.301.00	02.05.301.00	02.05.301.00	02.05.301.00
22.	On/Off Rocker Switch	02.19.075.00	---	---	---	02.19.076.00	02.19.076.00	02.19.076.00	02.19.076.00	02.19.076.00	02.19.076.00	02.19.076.00	02.19.076.00
23.	Base Thermostat	02.16.039.00	---	---	---	02.16.039.00	02.16.039.00	02.16.039.00	02.16.039.00	02.16.039.00	02.16.039.00	02.16.039.00	02.16.039.00
24.	Knob, Base Thermostat	05.30.039.00	---	---	---	05.30.039.00	05.30.039.00	05.30.039.00	05.30.039.00	05.30.039.00	05.30.039.00	05.30.039.00	05.30.039.00
	Electrical Drawing	HS2-2956	---	---	---	HS2-3003	HS2-3004	HS2-3517	HS2-3518	HS2-3517	HS2-3518	HS2-3517	HS2-3518

Shaded area reflects export models only.