

**GAS FRYER
FRIGGITRICE GAS**

PNC	Model	Ref.	Page	Notes
201 040	HFR/G 430	a	1- 2	Gas fryer 23 L " Zanussi "
201 041	HFR/G 830	b	1- 2	Gas fryer 23 L + 23 L " Zanussi "
201 052	HFRS/G 430	c	1- 2	Cantilever gas fryer 23 L " Zanussi "
211 040	ZFR/G 430	e	1- 2	Gas fryer 23 L " Electrolux "
211 041	ZFR/G 830	f	1- 2	Gas fryer 23 L + 23 L " Electrolux "
211 052	ZFRS/G 430	g	1- 2	Cantilever gas fryer 23 L " Electrolux "

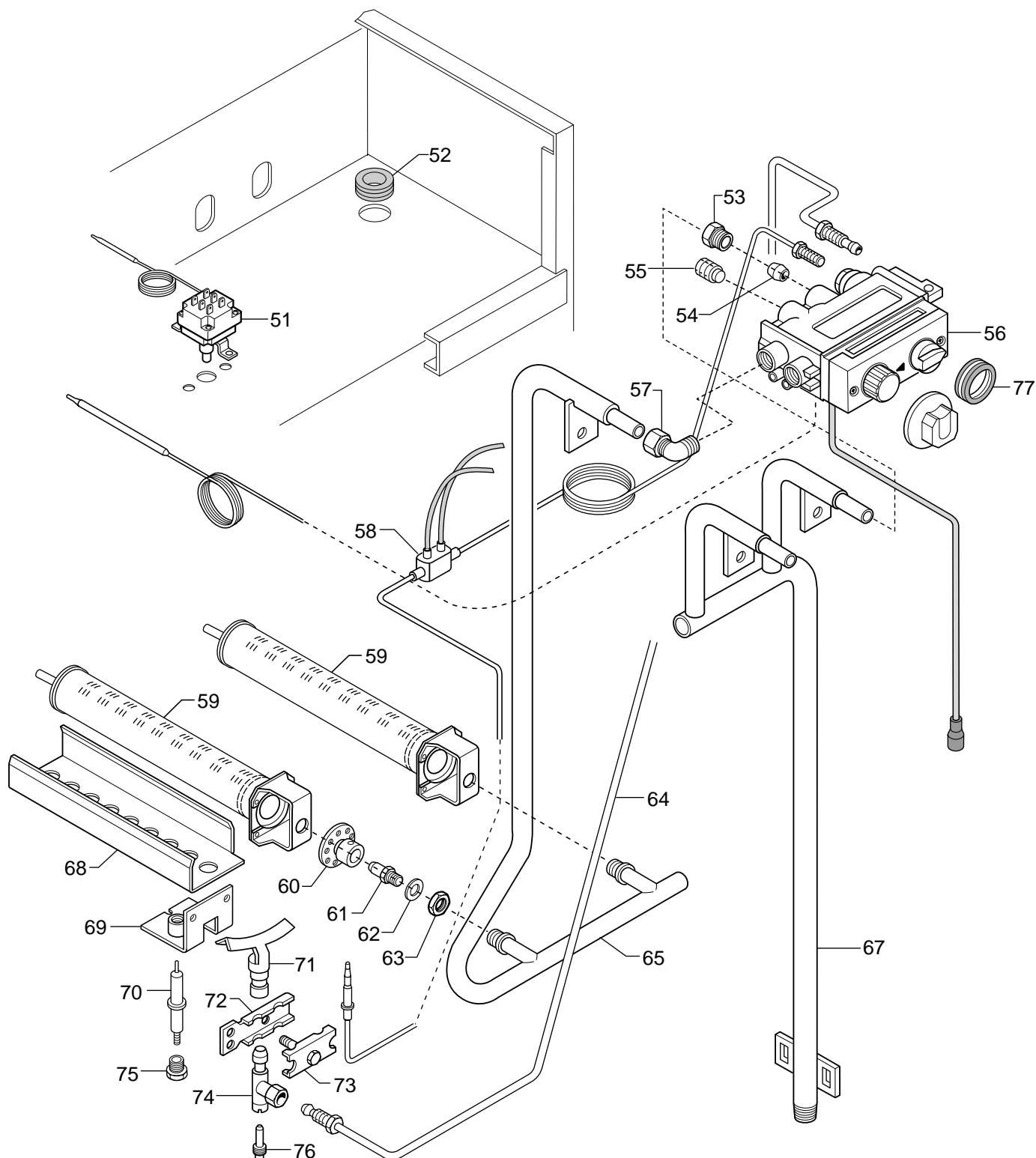
Indice

Pag. 1	Tank-shelf and components
2	Gas components
3-5	Spare parts list

Index

Ripiano-vasca e componenti
Componenti gas
Lista ricambi

Brand / Marchio: Z - E
Factory code: 9PDX



61	76
006419 ø 2,90 2H,2E,2E+,2L G20 20mbar	003327 ø 0,40 2H,2E,2E+,2L G20 20mbar
054084 ø 3,20 LL G25 20mbar (Germania)	003327 ø 0,40 LL G25 20mbar (Germania)
003723 ø 1,75 3+,3B/P G30/G31 28-30/ 37mbar	058525 ø 0,30 3+,3B/P G30/G31 28-30/ 37mbar
002905 ø 1,60 3B/P G30/G31 50 mbar (Germania)	058525 ø 0,30 3+,3B/P G30/G31 50 mbar (Germania)

GAS FRYER 23 L
FRIGGITRICE GAS 23 L **HD 900**

Gas fryer
Friggitrice gas

PNC	Model	Ref.	Notes	PNC	Model	Ref.	Notes
201 040	HFR/G 430	a	23 L Zan.	211 040	ZFR/G 430	e	23 L Elux
201 041	HFR/G 830	b	23 L+23 L Zan.	211 041	ZFR/G 430	f	23 L+23 L Elux
201 052	HFRS/G 430	c	23 L sbalzo Zan.	211 052	ZFRS/G 430	g	23 L sbalzo Elux

Pos	Code	Descrizione	Description	Ref. / Notes
		Pagina 1	Page 1	
1	004496	Maniglia coperchio	Handle, lid	
2	006132	Coperchio	Lid	
3	006133	Cestello, 1/2	Basket, 1/2	
4	006538	Cestello, 1/1	Basket, 1/1	
5		Squadretta convogliatore	Bracket, conveyor	-art. 527817400
6		Convogliatore fiamma	Conveyor, flame	-art. 523878301
7		Camera di combustione	Chamber, combustion	abc -art. 529806300
7		Camera di combustione	Chamber, combustion	efg -art. 529808600
8	006130	Griglia di fondo cestelli	Bottom grid, baskets	
9	006580	Griglia camino Zanussi	Exhaust grid Zanussi	abc
9	006029	Griglia camino Electrolux	Exhaust grid Electrolux	efg
10		Parete anter. camino	Front wall, chimney	abc -art. 523878500
10		Parete anter. camino	Front wall, chimney	efg -art. 529808900
11		Parete poster. camino	Back wall, chimney	abc -art. 523866200
11		Parete poster. camino	Back wall, chimney	efg -art. 529809000
12	006583	Supporto cestello	Support, basket	
13	006576	Ripiano - vasca	Tank - shelf	ac
13	006545	Ripiano - vasca	Tank - shelf	b
13	006547	Ripiano - vasca	Tank - shelf	eg
13	006548	Ripiano - vasca	Tank - shelf	f
14	002075	Guarnizione bulbo ø 6 mm	Gasket, bulb diam. 6 mm	
15	002076	Raccordo fiss. bulbo ø 6 mm	Nipple, fixing bulb diam. 6 mm	
16	059293	Guarnizione OR ø 4 mm	O Ring, diam.4 mm	
17	059295	Raccordo fiss. bulbo ø 4 mm	Nipple, fixing bulb diam. 4 mm	
18		Parete anter. camera combustione	Front wall, combustion chamber	ac -art. 529806000
18		Parete anter. camera combustione	Front wall, combustion chamber	b -art. 529807000
18		Parete anter. camera combustione	Front wall, combustion chamber	eg -art. 529808700
18		Parete anter. camera combustione	Front wall, combustion chamber	f -art. 529809400
19		Parete poster. camera combustione	Back wall, combustion chamber	ac -art. 529806101
19		Parete poster. camera combustione	Back wall, combustion chamber	b -art. 529807102
19		Parete poster. camera combustione	Back wall, combustion chamber	eg -art. 529808801
19		Parete poster. camera combustione	Back wall, combustion chamber	f -art. 529809502
20	052263	Distanziale convogliatore	Spacer, conveyor	
21	0A5153	Rondella cruscotto	Washer, control panel	
22	006572	Cruscotto Zanussi	Control panel, Zanussi	ac
22	006540	Cruscotto Zanussi	Control panel, Zanussi	b
22	006542	Cruscotto Electrolux	Control pane, Electrolux	eg
22	006543	Cruscotto Electrolux	Control panel, Electrolux	f
23	059207	Indice manopola	Pointer, knob	abc
23	059257	Indice manopola	Pointer, knob	efg
24	006570	Manopola per valvola gas	Knob, gas valve	abc
24	006537	Manopola per valvola gas	Knob, gas valve	efg
25	053342	Molla per marchio	Spring, brand	
26		Fianco dx.	R.H. side panel	abef -art. 522822403
26		Fianco dx.	R.H. side panel	cg -art. 853853200
27	057400	Vetro spia bruciatore	Inspection glass, burner	
28	057402	Guarnizione per vetro spia	Gasket, inspection glass	

Gas fryer
Friggitrice gas

PNC	Model	Ref.	Notes	PNC	Model	Ref.	Notes
201 040	HFR/G 430	a	23 L Zan.	211 040	ZFR/G 430	e	23 L Elux
201 041	HFR/G 830	b	23 L+23 L Zan.	211 041	ZFR/G 430	f	23 L+23 L Elux
201 052	HFRS/G 430	c	23 L sbalzo Zan.	211 052	ZFRS/G 430	g	23 L sbalzo Elux

Pos	Code	Descrizione	Description	Ref. / Notes
29	057382	Cornice per vetro spia	Frame, inspection glass	
30	006142	Maniglia rubinetto	Handle, tap	
31	006123	Rubinetto di scarico	Drain tap	
32		Supporto per maniglia rubinetto	Support, handle tap	-art. 527813100
33	052126	Perno filettato	Thread pin	
34		Schienale - 400 mm	Back panel - 400 mm	aceg -art. 520863102
34		Schienale - 800 mm	Back panel - 800 mm	bf -art. 520863003
35		Fianco sx.	L.H. side panel	abef -art. 522822503
35		Fianco sx.	L.H. side panel	cg -art. 853853300
36	059902	Magnete per porta	Magnet, door	
37	059310	Cerniera superiore porta	Upper hinge, door	
38	059306	Maniglia porta	Handle door	abc
39	047730	Supporto maniglia	Support, handle	efg
40	059349	Maniglia porta	Handle door	efg
41	059311	Porta	Door	abc
41	006627	Porta	Door	efg
42	006129	Cerniera inferiore porta	Lower hinge, door	
43	059313	Perno cerniera	Hinge pin	
44	059312	Controporta	Inner door	abc
44	059760	Controporta	Inner door	efg
45	006131	Maniglia bacinella olio	Handle, oil bowl	
46	006148	Bacinella olio	Bowl, oil	
47	002110	Piede	Foot	abef
		Pagina 2	Page 2	
51	006282	Termostato di sicurezza	Safety thermostat	
52	066834	Gommino passacavo ø 4 mm	Chock gasket diam. 4 mm	
52	050180	Gommino passacavo ø 23 mm	Chock gasket diam. 23 mm	
53	051950	Raccordo per valvola gas	Nipple, gas valve	
54	050682	Bicono ø 12 mm	Double cone, diam. 12 mm	
55	056009	Tappo filettato 3/8"	Screw plug 3/8"	
56	006574	Valvola gas	Gas valve	Mertik
57		Raccordo 90° per valvola gas	Nipple 90°, gas valve	-art. 515863200
58	054055	Assieme termocoppia	Thermocouple assembly	
59	006127	Bruciatore	Burner	
60	054039	Aeratore bruciatore	Aerator, burner	
61	006419	Ugello ø 2,90	Nozzle diam. 2,90	G 20- 20 mbar
61	054084	Ugello ø 3,20	Nozzle diam. 3,20	G 25- 20 mbar
61	003723	Ugello ø 1,75	Nozzle diam. 1,75	G 30/G31 28-30/ 37 mbar
61	002905	Ugello ø 1,60	Nozzle diam. 1,60	G 30/G31 50 mbar
62	054029	Guarnizione ugello	Gasket, nozzle	
63	020997	Controdado	Lock nut	
64		Conduttura pilota	Pipe, pilot burner	-art. 806817500
65		Conduttura, valvola gas-bruciatore	Pipe, gas valve - burner	-art. 853849000
67		Conduttura alimentazione gas	Inlet pipe, gas	aceg -art. 853849100

Gas fryer
Friggitrice gas

PNC	Model	Ref.	Notes	PNC	Model	Ref.	Notes
201 040	HFR/G 430	a	23 L Zan.	211 040	ZFR/G 430	e	23 L Elux
201 041	HFR/G 830	b	23 L+23 L Zan.	211 041	ZFR/G 430	f	23 L+23 L Elux
201 052	HFRS/G 430	c	23 L sbalzo Zan.	211 052	ZFRS/G 430	g	23 L sbalzo Elux

Pos	Code	Descrizione	Description	Ref. / Notes
67		Conduttura alimentazione gas	Inlet pipe, gas	bf -art. 853849200
68		Convogliatore per bruciatore Dx	R.H. conveyor, burner	abc -art. 523873500
68		Convogliatore per bruciatore Dx	R.H. conveyor, burner	efg -art. 529801500
68		Convogliatore per bruciatore Sx	L.H. conveyor, burner	abc -art. 523872800
68		Convogliatore per bruciatore Sx	L.H. conveyor, burner	efg -art. 529801400
69		Supporto pilota	Support, pilot burner	-art. 800829900
70	059380	Elettrodo di accensione	Electrode, ignition	
71	006128	Cannello pilota	Blowpipe, pilot burner	
72	052256	Staffa supporto pilota	Bracket, pilot burner support	
73	052246	Controstaffa supporto	Counter bracket, support	
74	052686	Bruciatore pilota	Pilot burner	
75	057960	Raccordo per elettrodo	Nipple, electrode	
76	003327	Ugello pilota ø 0,40	Nozzle, pilot burner ø 0,40	G 20/G25 - 20/25 mbar
76	058525	Ugello pilota ø 0,30	Nozzle, pilot burner ø 0,30	G 30/G31 - 28/50 mbar
77	006465	Guarnizione, manopola valvola gas	Gasket, gas valve knob	