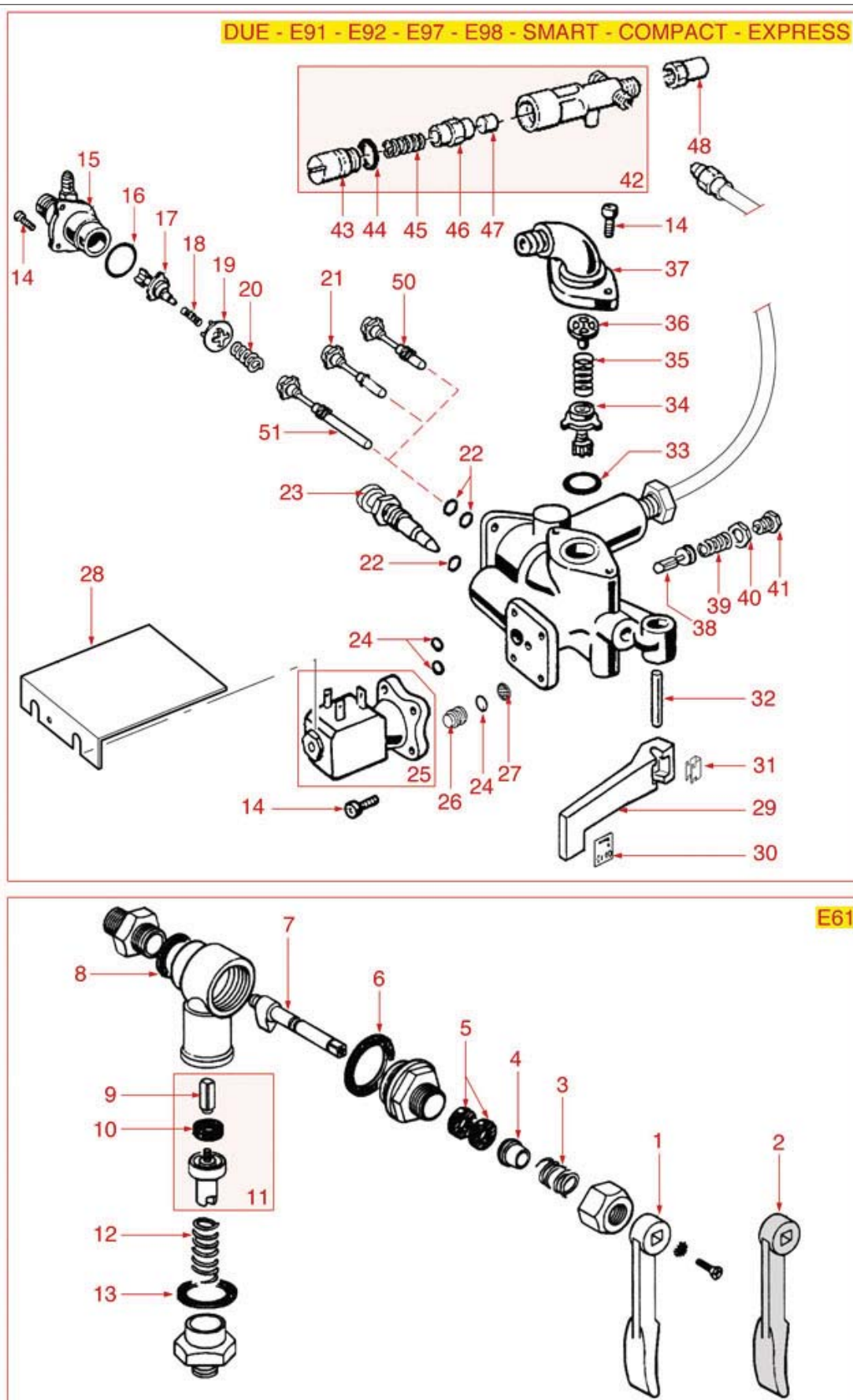




WATER INLET TAP E61-DUE-E91-E98





# FAEMA



Position	LF code no.	Description
1	1225501	INLET TAP LEVER
3	1250521	SPRING ø 15x17 mm
4	1186322	TAP ROD BUSHING
5	1186312	EPDM FLAT GASKET ø 15.5x7.5x4 mm
6	1186307	TEFLON FLAT GASKET ø 36x30x2 mm
7	1184551	CAM FOR COFFEE GROUP
8	1186326	TEFLON FLAT GASKET ø 22x16x2 mm
9	1324033	SQUARE PIN 12.1 mm 6x6 mm M3
10	1186822	VITON FLAT GASKET ø 13x4x4 mm
10	5053833	FLAT GASKET VITON ø 13x4x4 mm NSF
11	1186408	INLET VALVE
13	1186326	TEFLON FLAT GASKET ø 22x16x2 mm
14	1455034	S/S SCREW T.C.C.E.I M4x10 UNI 5931
16	1186401	O-RING 02093 EPDM
17	1523417	NON-RETURN VALVE
17	1523419	NON-RETURN VALVE
18	1250162	NON-RETURN VALVE SPRING ø 6.5x20 mm
19	1250161	TAP SPRING GUIDE
20	1250160	PIN SPRING ø 14x23 mm
21	1523416	INLET VALVE
22	1186252	O-RING R3 EPDM
24	1186611	O-RING 02025 RED SILICONE
24	1186612	O-RING 02025 VITON
25	1120331	2-WAY SOLENOID VALVE LUCIFER 240V 50Hz
26	1120007	NOZZLE HOLE 1.2 mm
27	1160011	WATER FILTER ø 9 mm
29	1225011	INLET TAP LEVER
33	3243069	O-RING OR 02068 EPDM
34	1186128	CONICAL EPDM SEAL ø 12x4x4 mm
34	1523417	NON-RETURN VALVE
35	1250162	NON-RETURN VALVE SPRING ø 6.5x20 mm
36	1250164	TAP SPRING GUIDE
38	1523418	NON-RETURN VALVE
39	1250158	VALVE SPRING ø 14x28 mm
40	1348036	NUT ø 3/8" WRENCH 21x6mm
41	1324028	WATER INLET TAP CAP
42	1523019	EXPANSION VALVE
44	1186236	O-RING 03043 VITON
45	1250016	SPRING ø 8x21 mm
47	1186363	BLIND GASKET ø 9x5 mm
50	1523017	INLET VALVE
51	1523018	INLET VALVE