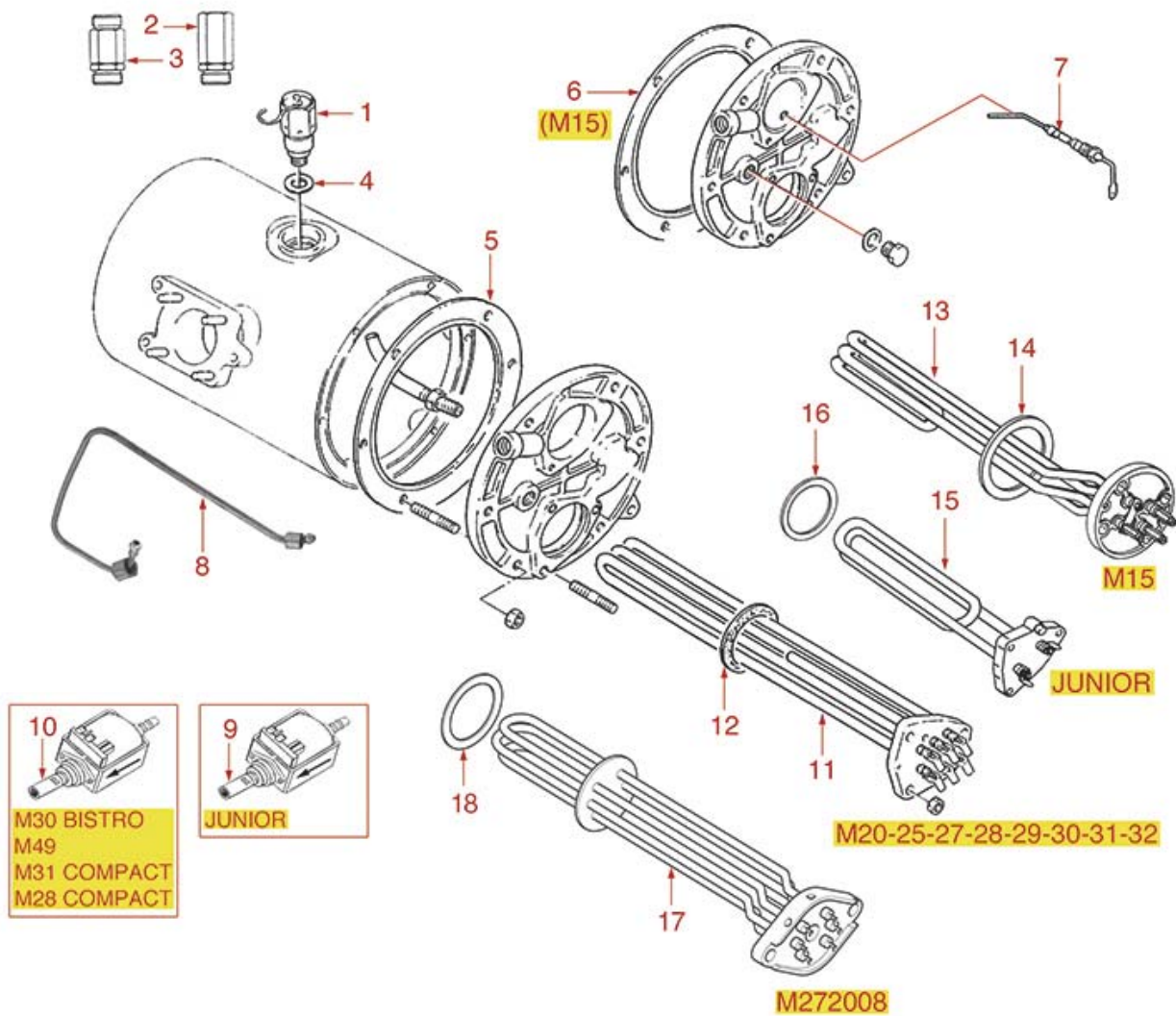




BOILER J-M15-20-22-25-27-28-29-30-31-32

JUNIOR-M15-M20-M22-M25-M27-M28-M29-M30-M31-M32





CIMBALI



Position	LF code no.	Description
1	1523535	BOILER VALVE ø 3/8"M
1	1523536	BOILER VALVE ø 3/8" M AUTO-CERTIFIED
2	1523541	BOILER VALVE ø 1/4"M
3	1523411	NON-RETURN VALVE ø 1/2"F-1/2"F
4	1186394	ASBESTOS FREE FLAT GASKET ø 22x17x2 mm
4	1186957	FLAT GASKET TEFLON ø 22x17x1,5 mm
5	1186572	BOILER GASKET ø 180x140x3 mm
5	1186751	BOILER GASKET ø 180x140x3 mm
6	1186750	BOILER GASKET ø 214x200x3 mm
7	1341003	LEVEL PROBE ø 1/8"M-108 mm
8	1449322	PRESSURE SWITCH BOILER PIPE
9	1331001	VIBRATORY PUMP FLUID-O-TECH 50W 240V
10	1122747	VIBRATORY PUMP EX4 48W 24V 50/60HZ
11	1755009	HEATING ELEMENT 2050/2440W 220/240V
11	1755010	HEATING ELEMENT 4500/5370W 220/240V
11	1755083	HEATING ELEMENT 1800W 220V
11	1755088	HEATING ELEMENT 3750W 230/400V
11	1755089	HEATING ELEMENT 5790W 220V
11	1755205	HEATING ELEMENT 2950/3420W 220/400V
11	1755647	HEATING ELEMENT 1800W 110V
12	1186607	FLAT CARBO GASKET ø 57.8x50x3 mm
12	1186609	TEFLON FLAT GASKET ø 58x51x2 mm
13	1755891	HEATING ELEMENT 5000W 220V
13	1755893	HEATING ELEMENT 3400W 230V
13	3355112	HEATING ELEMENT 2700W 220/380V
14	3186006	ASBESTOS FREE FLAT GASKET ø 95x56x3 mm
15	1755082	HEATING ELEMENT 1300W 220V
15	1755646	HEATING ELEMENT 1300W 110V
16	1186607	FLAT CARBO GASKET ø 57.8x50x3 mm
16	1186609	TEFLON FLAT GASKET ø 58x51x2 mm
17	1755117	HEATING ELEMENT 3780/4500W 230/400V
18	1186179	TEFLON FLAT GASKET ø 57x42x3 mm
18	1186606	FLAT CARBO GASKET ø 57x43x3 mm
30	1191001	COMPLETE METAL COUPLING
31	1191002	RUBBER COUPLING ø 41.5 mm
32	1191003	COMPLETE METAL COUPLING
33	1191005	RUBBER COUPLING ø 35 mm
34	1191004	COMPLETE METAL COUPLING