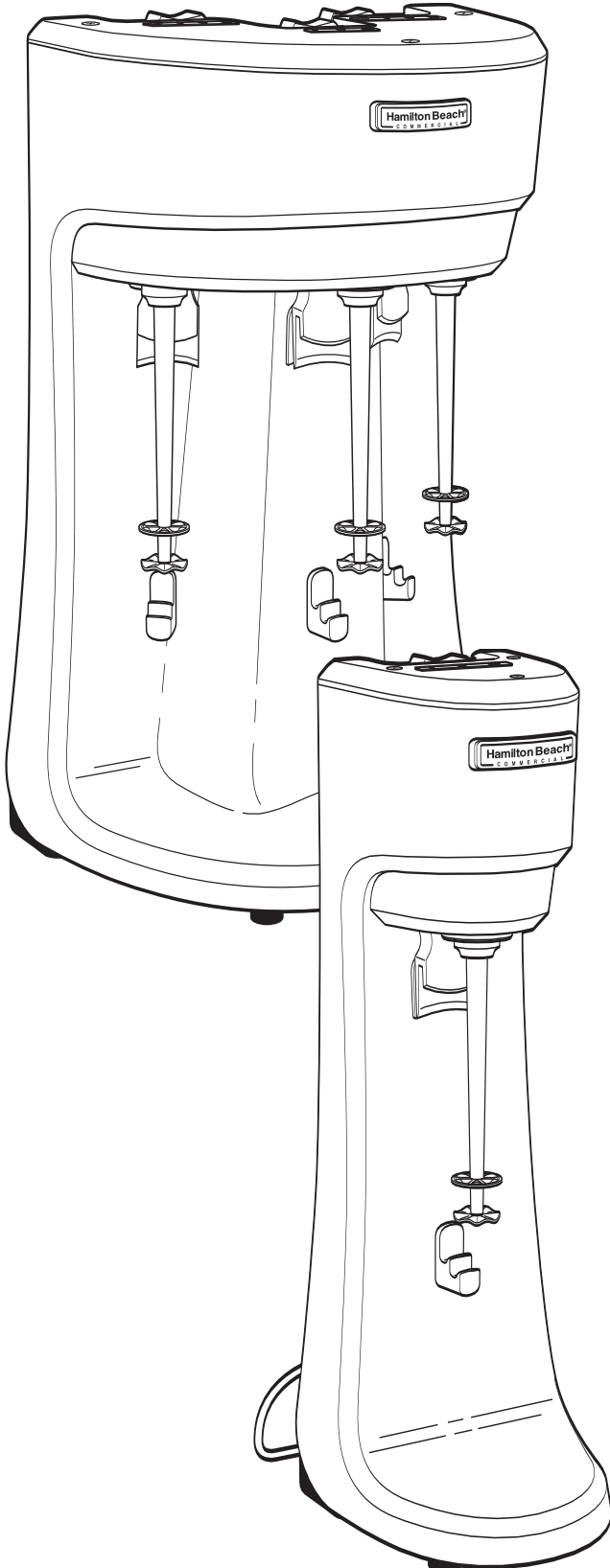


Hamilton Beach[®]

COMMERCIAL



840155000
9/06

GB	Drink Mixer Operation Manual (2)
FR	Mixeur à boisson Manuel d'utilisation (6)
ES	Mezcladora de bebidas Manual de operación (10)
PT	Misturador de bebidas Manual do Utilizador (14)
IT	Mixer per bevande Manuale per il funzionamento (18)
DE	Getränkemixer Bedienungsanleitung (22)
NL	Drink Mixer Gebruiksaanwijzing (26)
DK	Drink Mixer Betjeningsvejledning (30)
SE	Drinkmixer Bruksanvisning (34)
NO	Drink Mikser Brukerhåndbok (38)
GR	Μίξερ για ποτά Εγχειρίδιο χειρισμού (42)
RU	Миксер для напитков Руководство по эксплуатации (46)
TU	İçki Mikseri Çalıştırma Kılavuzu (50)
BR	Misturador de bebidas Manual do Utilizador (54)
CN	饮料混合器 操作手册 (58)
JP	ドリンクミキサー 操作マニュアル (62)
KR	드링크 믹서 사용 설명서 (66)
SA	خلاطة الشراب دليل التشغيل (73)

IMPORTANT SAFETY INSTRUCTIONS

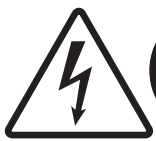
Your safety and the safety of others is very important.

We have provided many important safety messages in this manual and on your appliance. Always read and obey all safety messages.

WARNING – When using electrical appliances, basic safety precautions should be followed to reduce the risk of personal injury, including the following:

- Read all instructions before using mixer.
- Plug into a grounded outlet.
- Do not use an adapter.
- Do not use an extension cord.
- Disconnect power before cleaning or servicing, and before installing or removing agitator.
- Do not spray or submerge mixer.
- Always use metal container when mixing.
- Do not put spoon or other utensils in metal container when mixing.
- Do not allow agitator to hit container sides when mixing.
- Inspect mixer and agitator daily.
- Replace agitators every 90 days.
- Do not operate any appliance with a damaged cord or plug, or after the appliance malfunctions or is damaged in any manner.
- If the supply cord of this appliance is damaged, it must be replaced by the manufacturer or its service agent or a similar qualified person.
UK ONLY: If fitted with a non-rewirable U.K. plug, the 13 amp fuse approved by ASTA to be B.S. 1362 must be used. If you need a replacement fuse carrier, it must be replaced with the same colour coded carrier with the same markings. Fuse covers and carriers can be obtained from approved service agents.

– SAVE THESE INSTRUCTIONS –



Electrical Shock Hazard
Disconnect power before cleaning mixer.
Failure to follow these instructions can result in death or electrical shock.



Electrical Shock Hazard
Plug into a grounded outlet.
Do not remove ground.
Do not use an adapter.
Do not use an extension cord.
Failure to follow these instructions can result in death, fire, or electrical shock.



Cut Hazard
Disconnect power before installing or removing agitator.
Always use metal container when mixing.
Do not put hands, spoons, or other utensils in metal container when mixing.
Failure to follow these instructions can result in serious injuries or cuts.

Sanitizing

For best results, use the Hamilton Beach Universal Container (#110E).

1. Fill container with sanitizing solution (1 tablespoon [15 ml] of household bleach per 1 gallon [3.8 liter] of clean, cool water (60°F/16°C) to ¾ full. Position the container properly on the mixer and run on low speed (I) for 1 minute.
2. Remove the container. Empty sanitizing solution and rinse container.
3. To dry, run the mixer on low speed (I) for 30 seconds with empty container in place. **DO NOT RINSE** after sanitizing is complete.

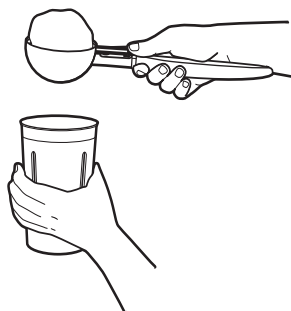
NOTE: If preferred, the container guide, container, and agitator may be cleaned in a dishwasher.



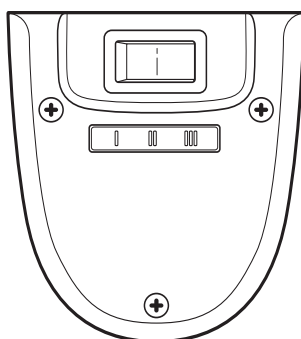
To Avoid Damage
Do not lift mixer by the shaft.



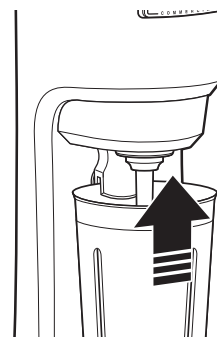
1



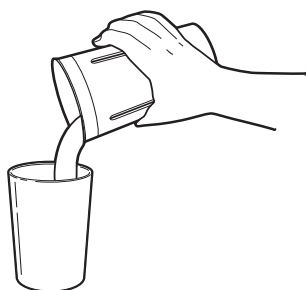
2

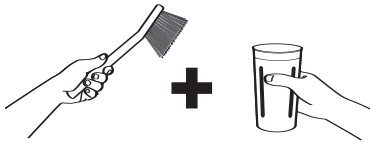


3

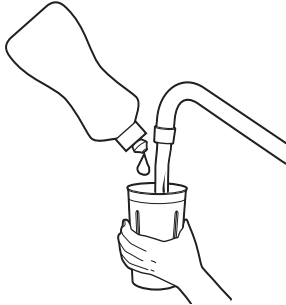


4

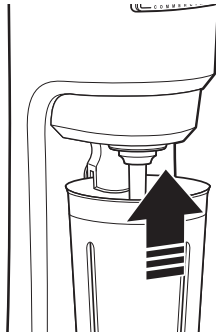




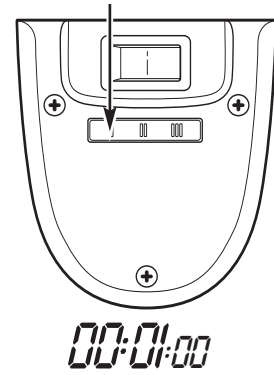
1



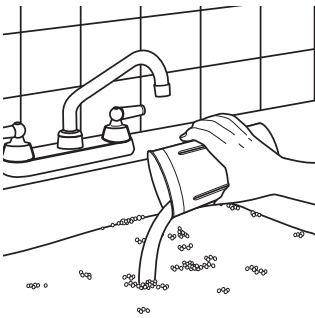
2



3



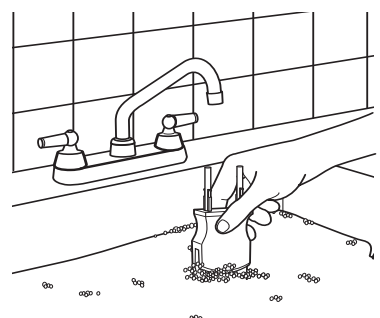
4



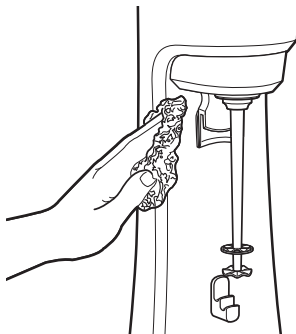
5



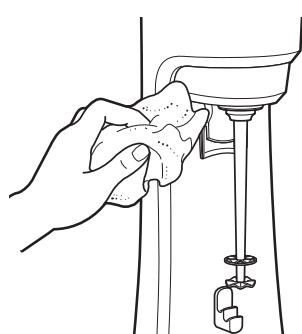
6



7

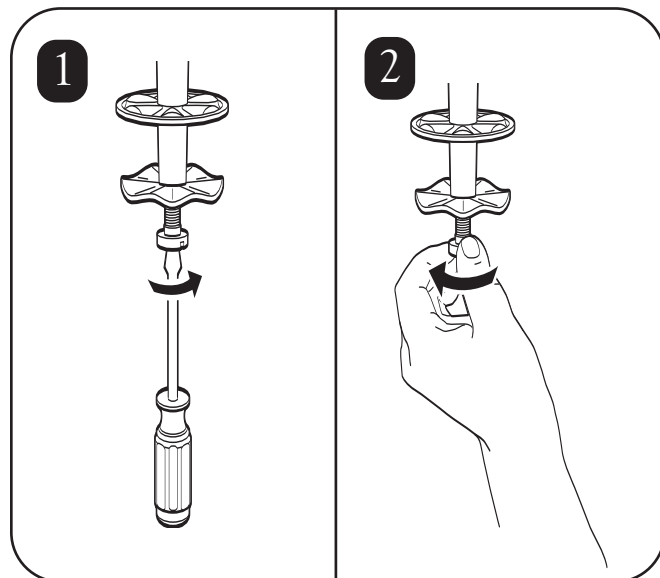


8

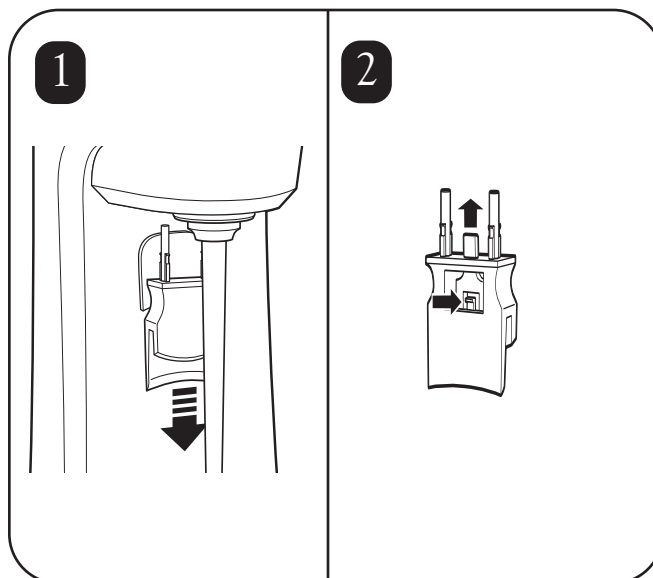




Replacing Agitator



Removing/Installing Container Guide



Technical Service

For assistance or replacement parts, call our

Technical Service number:

++910-693-4277

www.commercial.hamiltonbeach.com

INSTRUCTIONS FOR PROPER DISPOSAL OF THIS PRODUCT PURSUANT TO THE EUROPEAN UNION'S DIRECTIVE ON ELECTRICAL WASTE

Please do not dispose of any electrical equipment as ordinary waste. Help conserve natural resources and protect the environment: when you have finished using this product, please dispose of it at your local waste collection or recycling center in the area reserved for electrical equipment. Contact your local authority to find the nearest waste collection center. To remind you to dispose of this product responsibly and separately from ordinary waste, it is marked with the symbol of a crossed-out trash bin.



重要的安全说明

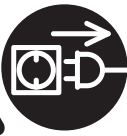
您和他人的安全很重要。

在此手册中，我们向您提供了许多关于此器具的重要安全信息。请始终阅读并遵守所有的安全信息。

警告 – 在使用此电器用具时，应遵守基本的安全防范规则，包括以下几点：

- 在使用此搅拌器之前阅读所有说明。
- 将插头插入接地插座。
- 不要使用转换接头。
- 不要使用延长电线。
- 在清洗或保养，以及撤换搅拌器之前，先断开电源。
- 不要向搅拌器喷水或将其置于水中。
- 在搅拌时要总是使用金属容器。
- 在搅拌时不要将勺子或其他器具放在金属容器中。
- 在搅拌时不可让搅拌器碰到容器的侧壁。
- 每天检查搅拌器和搅拌机。
- 每 90 天更换一次搅拌机。
- 不要使用破损的电线或插头，或在用具发生故障时操作任何用具，或以任何方式损害用具。

– 注意以下这些说明 –



电击事故危害
在清理搅拌器之前断开电源。
不按照此说明做可能会致死或遭到电击。



电击危险
把插头插入接地插座。不要移动所插范围。
不要使用转换接头。
不要使用延长电线。
不按照此说明做可能会致死、引起火灾或遭到电击。



刀伤危险
在安装或移除搅拌机之前先断开电源。
在搅拌时要总是使用金属容器。在搅拌时不要将手、勺子或其他器具放在金属容器中。如果不按照这些说明做，可能导致严重的伤害或刀伤。

清洗消毒

为了获得最佳效果，请使用通用的 Hamilton Beach 容器 (#110E)。

1. 将容器内装满清洁液（每 1 加仑 [3.8 公升] 使用 1 汤匙

[15 毫升] 的家用漂白剂混合 1 加仑（3.8 公升）的清洁冷水 (60° F/16° C)，装满容器的 3/4。将容器适当地安放在搅拌器内，并低速 (I) 运行 1 分钟。

2. 卸下容器。倒掉清洁液，并清洗容器。

3. 如欲进行干燥，请将空容器放在置于适当的位置以低速 (I) 运行搅拌机 30 秒钟。在消毒后不要冲洗。

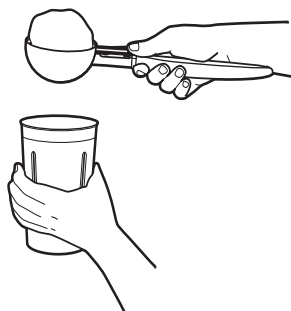
注意： 您可根据自己喜好在洗碗机内清洗容器部件、容器和搅拌机。



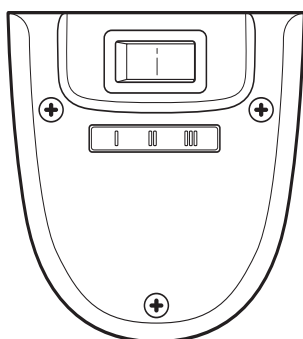
为避免损坏，
不要用杆提升搅拌器。



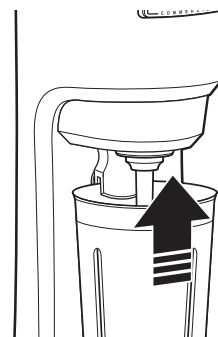
1



2

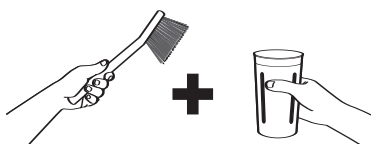


3

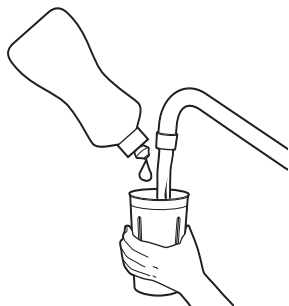


4

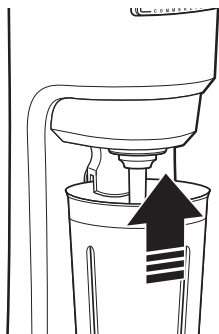




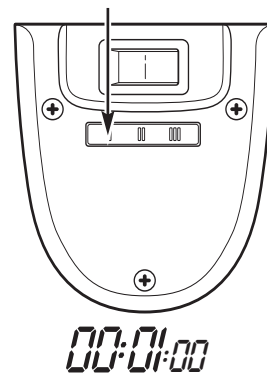
1



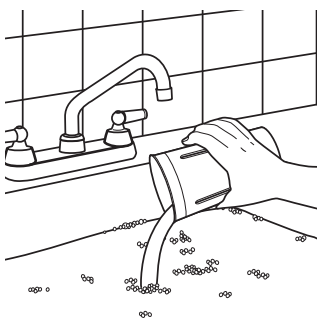
2



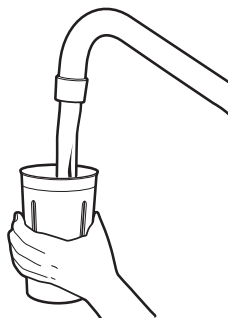
3



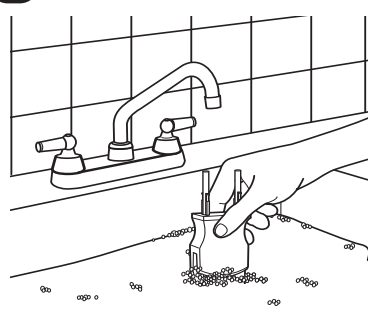
4



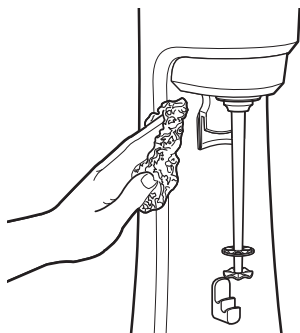
5



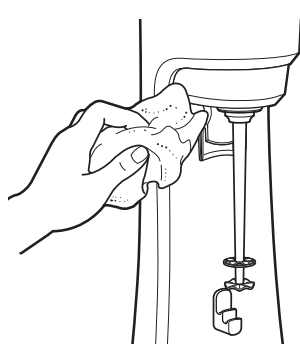
6



7

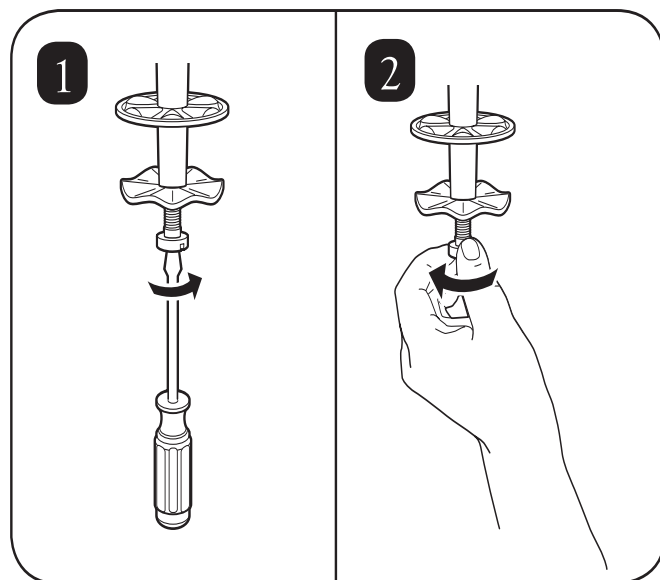


8

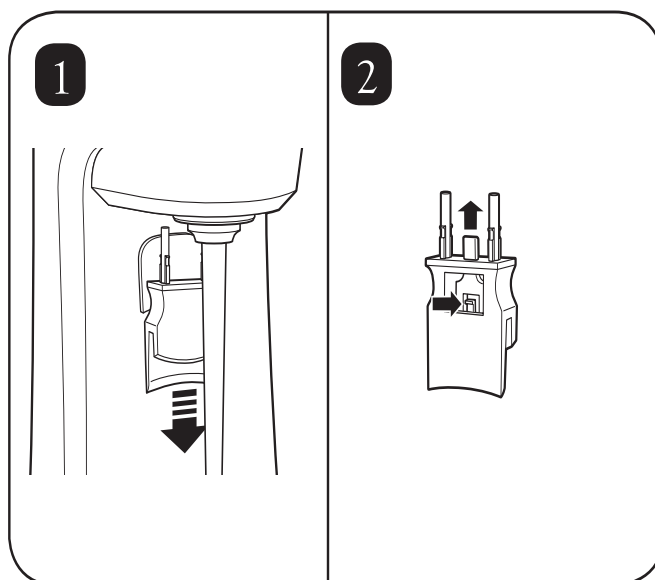




更换搅拌机



卸下/安装 容器主杆



技术服务

有关帮助或更换零件，请致电我们的

技术服务部：

++910-693-4277

www.commercial.hamiltonbeach.com

按照欧盟的电消耗指示对这种产品进行适当处理的说明

请不要像处理普通垃圾一样处理任何电气设备。帮助保存自然资源，保护环境：当您使用完本产品时，请在为电气设备预留区域的当地垃圾收集或回收中心进行处理。

与当局联系，以便能找到最近的垃圾收集中心。为了提醒您合理地处理本产品（有别于处理普通垃圾），垃圾箱上标记了不可循环符号。

